

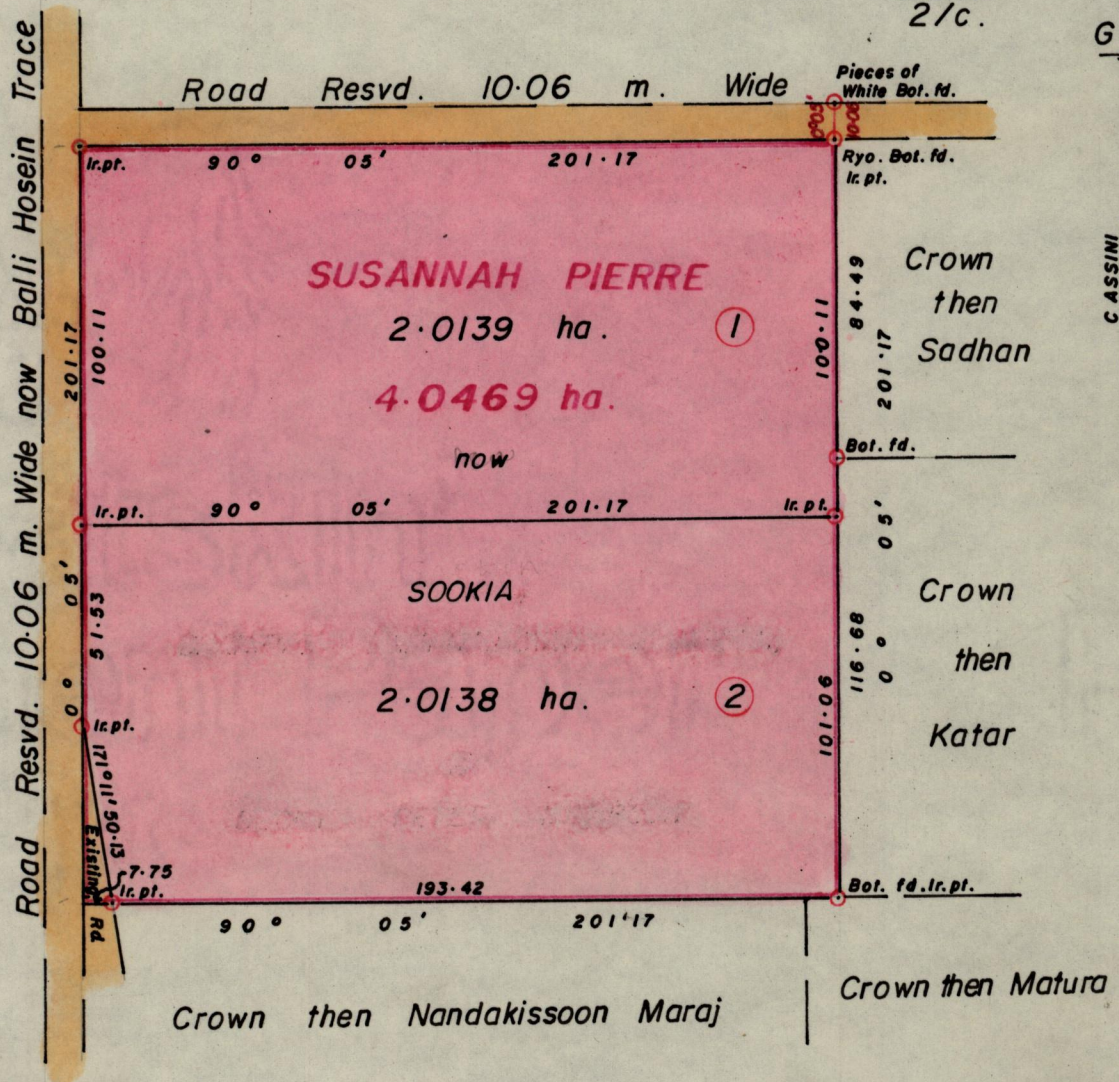
1155

532

R.P.O. Vol. 226
C.T. Vol.

Fol. 571
Fol.

Ward of Siparia.
County of St. Patrick.
Cadastral Sheet G.17.F.
73.A.
2/c.



G N
CASSINI

485

Approved

Alwyn Thiel
Director of Surveys
4 84.04.03

SCALE 1:2000

Note: To obtain compass bearings add/subtract 5 minutes Distances are in metres.

PLAN of 2 Parcelsof land coloured pink in the Ward of Siparia.
Containing together four point zero two seven seven hectares.
Surveyed by me, with due authority, in July 1988.

I certify that I have complied with rule 76 under section 14(2)(d) of the
Land Surveyors' Ordinance 1952, and that this plan is correct.

Checked by *GR 31/2/89* *Calliecharan*

Entered Land Surveyor, Trinidad 22/7/1988