

R.P.O. Vol 565
C.T. Vol. 658

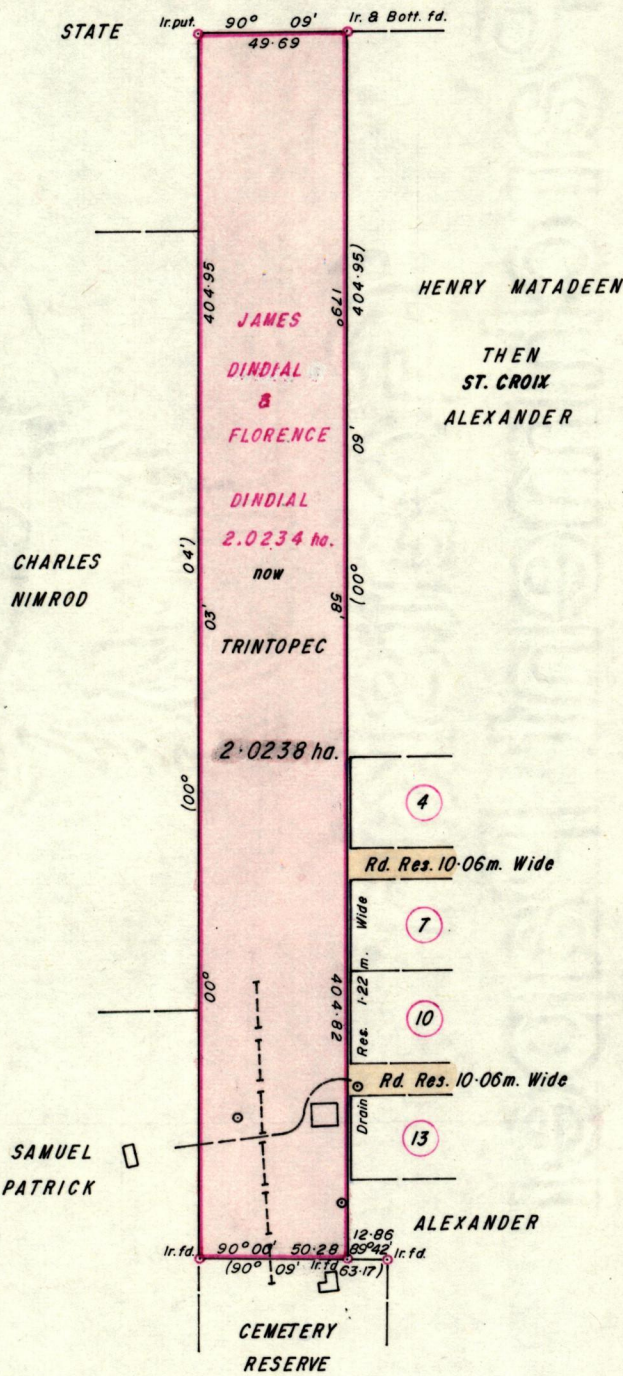
Fol. 397
Fol. 455

1155

Ward of Erin.
County of St. Patrick.
Cadastral Sheet G.16.K $\frac{73A}{37a}$

523

Vide Bk. 723 Fol. 252
Bk. 970 Fol. 79



Approved

Aloysius Thibault
Director of Surveys 89.03.23

Bearings are Cassini Grid, based on Solar Obs.

SCALE 1:2500

Note: To obtain compass bearings add/subtract

minutes

Distances are in metres.

PLAN of a Parcel of land coloured Pink in the Ward of Erin.

Containing two point zero two three eight hectares

Redefined by me, with due authority, in December 1988

I certify that I have complied with rule 76 under section 14(2)(d) of the Land Surveyors' Ordinance 1952, and that this plan is correct.

Checked by *SK 23/3/89*

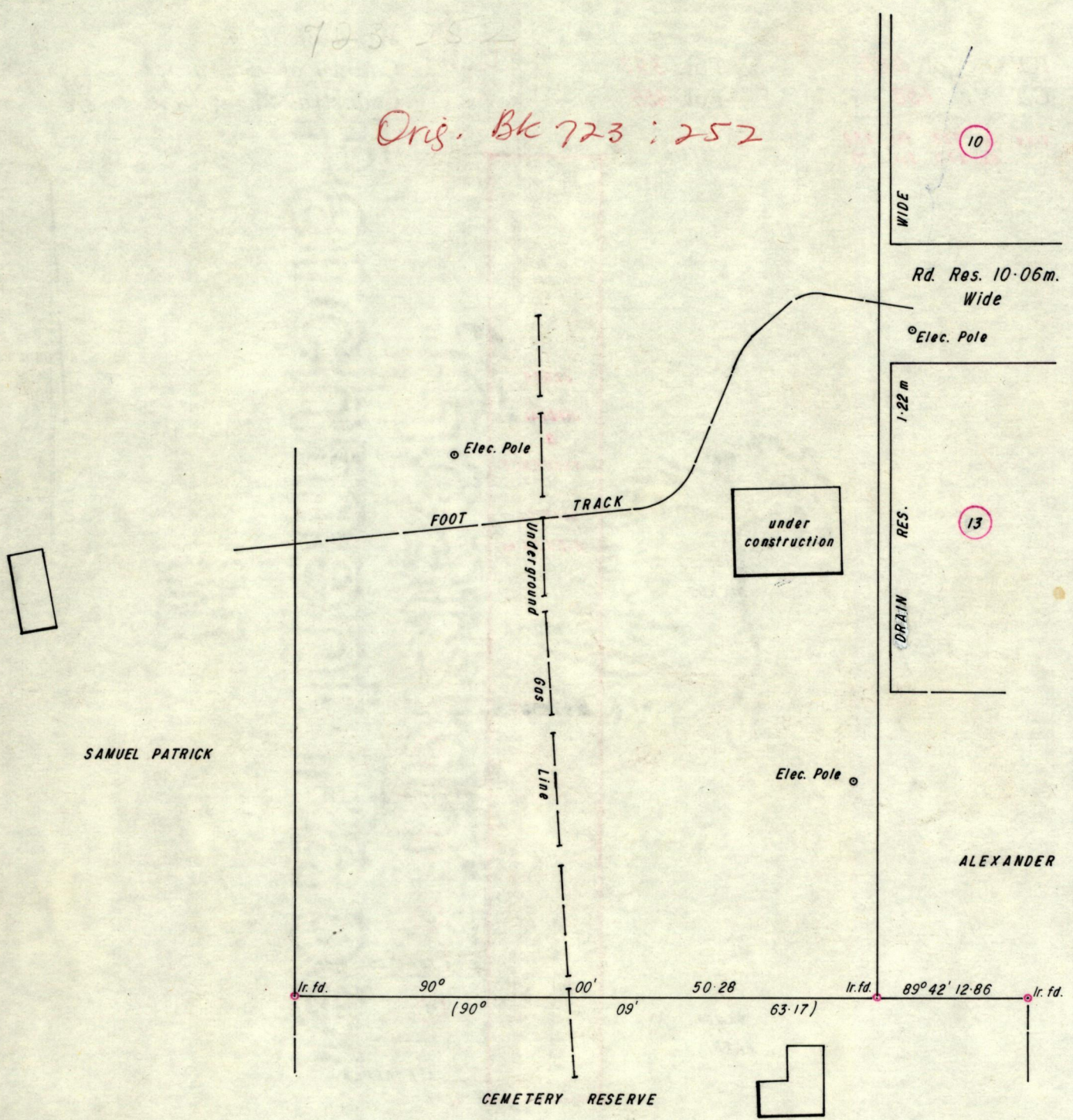
A. Neenan

Entered

Land Surveyor, Trinidad 20th February 1989

723-252

Orig. Bk 723 : 252



SCALE 1:500
Distances are in Metres