

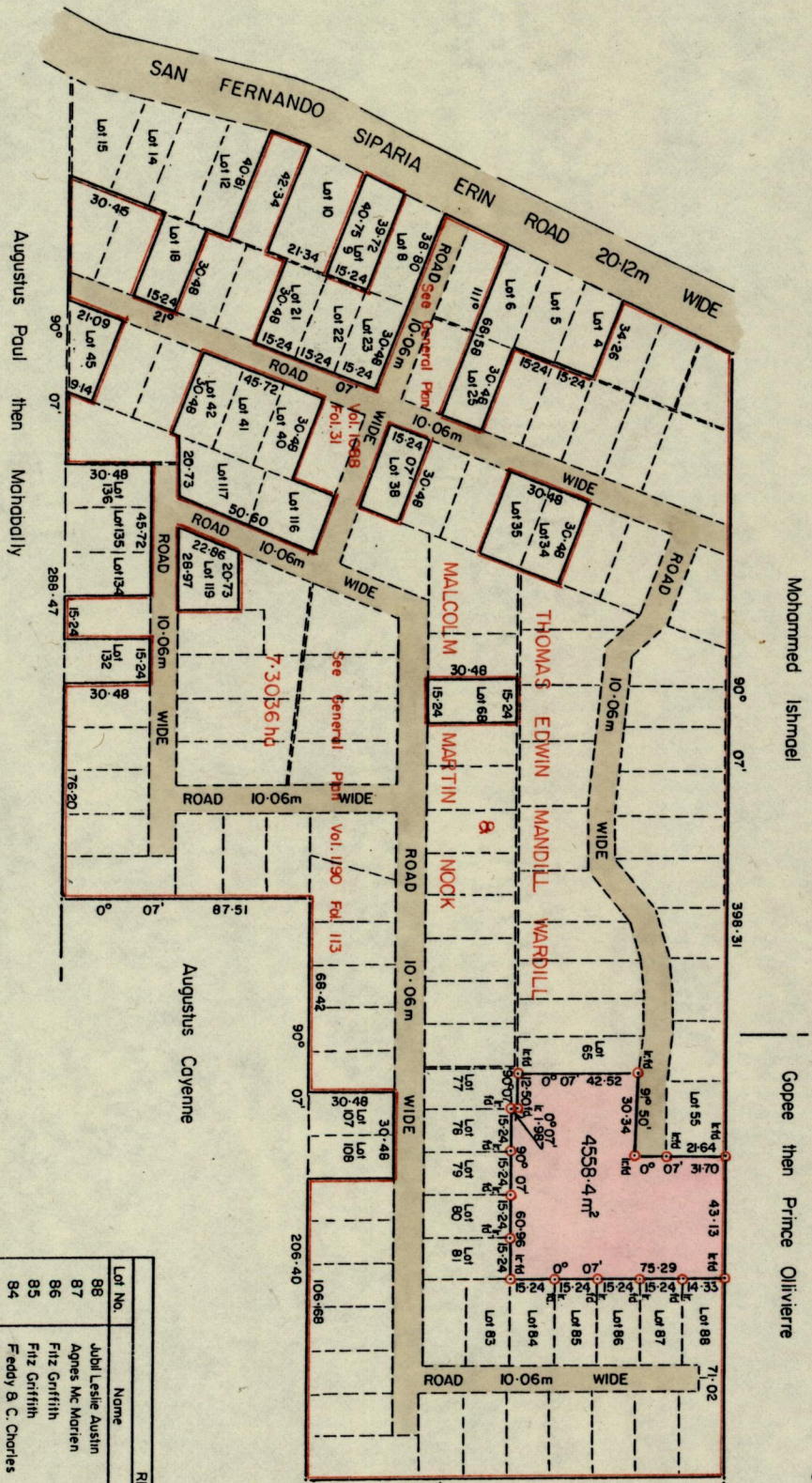
4836

R.P.O. Vol. C.T. Vol. 1259 Fol. 243

Ward of Erin
County of St. Patrick
Cadastral Sheet G 16 L. 73A
3/0

1155 1155

Approved
Albert J. Kelly
Director of Surveys
89.02.28



To obtain compass bearings subtract 7 minutes

SCALE 1/2500
Distances are in metres

PLAN of a Parcel of land coloured pink in the Ward of Erin
Containing four thousand five hundred and fifty eight point four square metres
Surveyed by me, with due authority in February 1989

I certify that I have complied with rule 76 under section 14 (2) (d) of the

Land Surveyors' Ordinance 1952, and that this plan is correct.

Checked by *GR 28/2/89*

Entered.....
Earle E. Shum
Land Surveyor, Trinidad 17th February 1989

Lot No.	Name	Area	REFERENCE	C.T. Vol.	Fol.
88	Jubli Leslie Austin	474.2 m ²		1487	57
87	Agnes Mc Marlen	464.5 m ²		1413	417
86	Fitz Griffith	464.5 m ²		1328	313
85	Fitz Griffith	464.5 m ²		1328	313
84	Feddy B. C. Charles	464.5 m ²		1339	35
83	Cecil Etienne & Marjorie Etienne	464.5 m ²		1344	67
81	Horace Hort	464.5 m ²		1446	197
80	Oiga Montogue	464.5 m ²		1401	25
79	Mary Montogue	464.5 m ²		1396	553
78	Homid Mohammed	464.5 m ²		1928	11
77	C. Alcida & V. Alcida	465.0 m ²		1328	303
65	Louisa Aleong	587.0 m ²		1363	35
55	Hutchinson Silvio	600.2 m ²		1407	7