

1155

465

1155

L. & S.—54

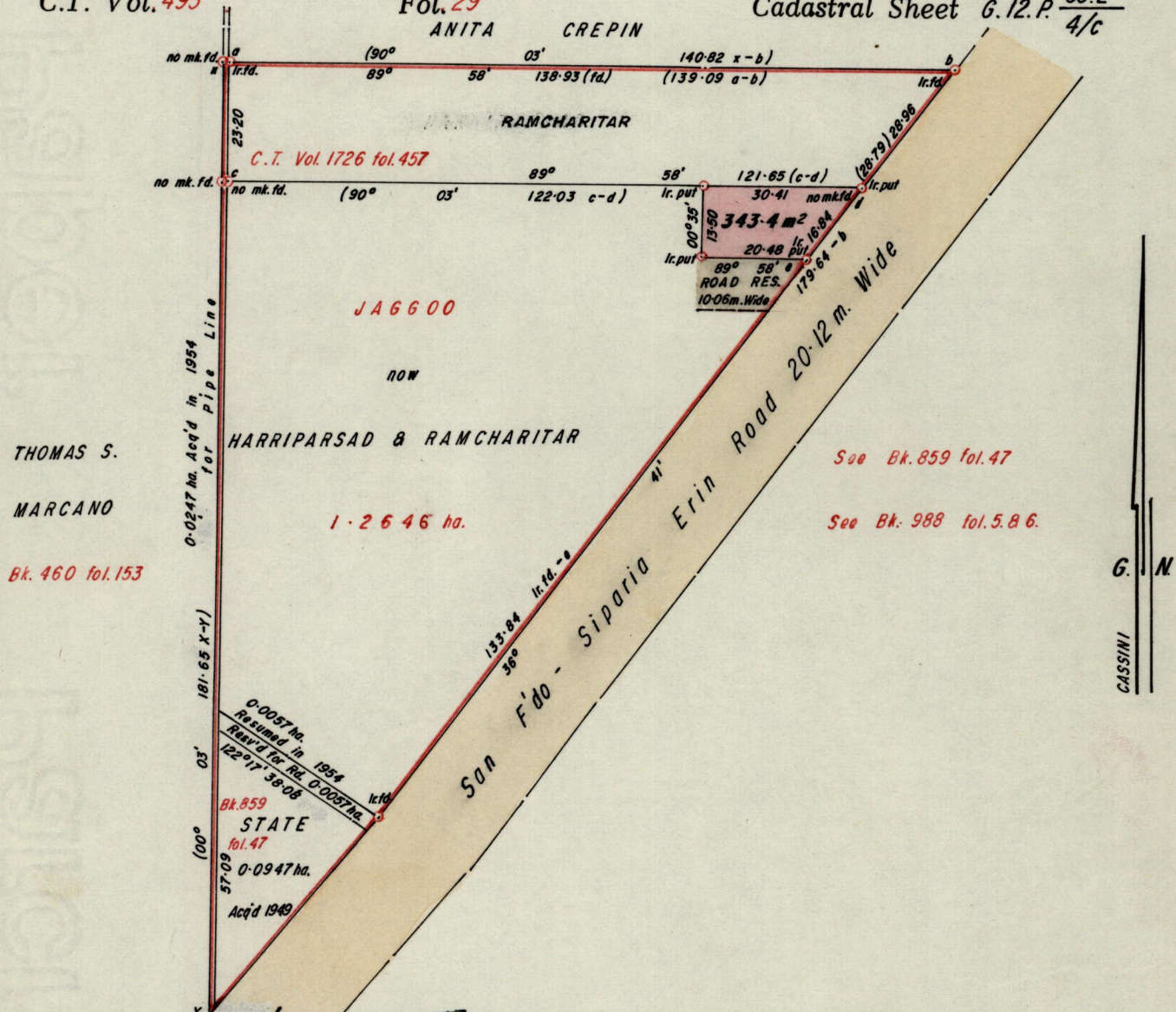
465

No 23885

R.P.O. Vol. 368
C.T. Vol. 493

Fol. 93
Fol. 29

Ward of Siparia
County of St. Patrick
Cadastral Sheet G.12.P. 63.E
4/c



THOMAS S.
MARCANO
Bk. 460 fol. 153

See Bk. 859 fol. 47
See Bk. 988 fol. 5.8.6.

G. N
CASSINI

Approved
Alberto Thiel
Director of Surveys
88.07.13

Bearings are based on Solar Observations (Cassini Grid)
Note: To obtain compass bearings ~~add~~/subtract 3 minutes
SCALE 1/1250
Distances are in Metres

PLAN of a Parcel of land coloured Pink in the Ward of Siparia
Containing three hundred and forty three point four square metres
Surveyed by me, with due authority, in April 1985
I certify that I have complied with rule 76 under section 14(2)(d) of the
Land Surveyors' Ordinance 1952, and that this plan is correct.

Checked by *[Signature]* 8/7/88 *Jankaran Mico*
Entered Land Surveyor, Trinidad *June 29th* 1988