

1155

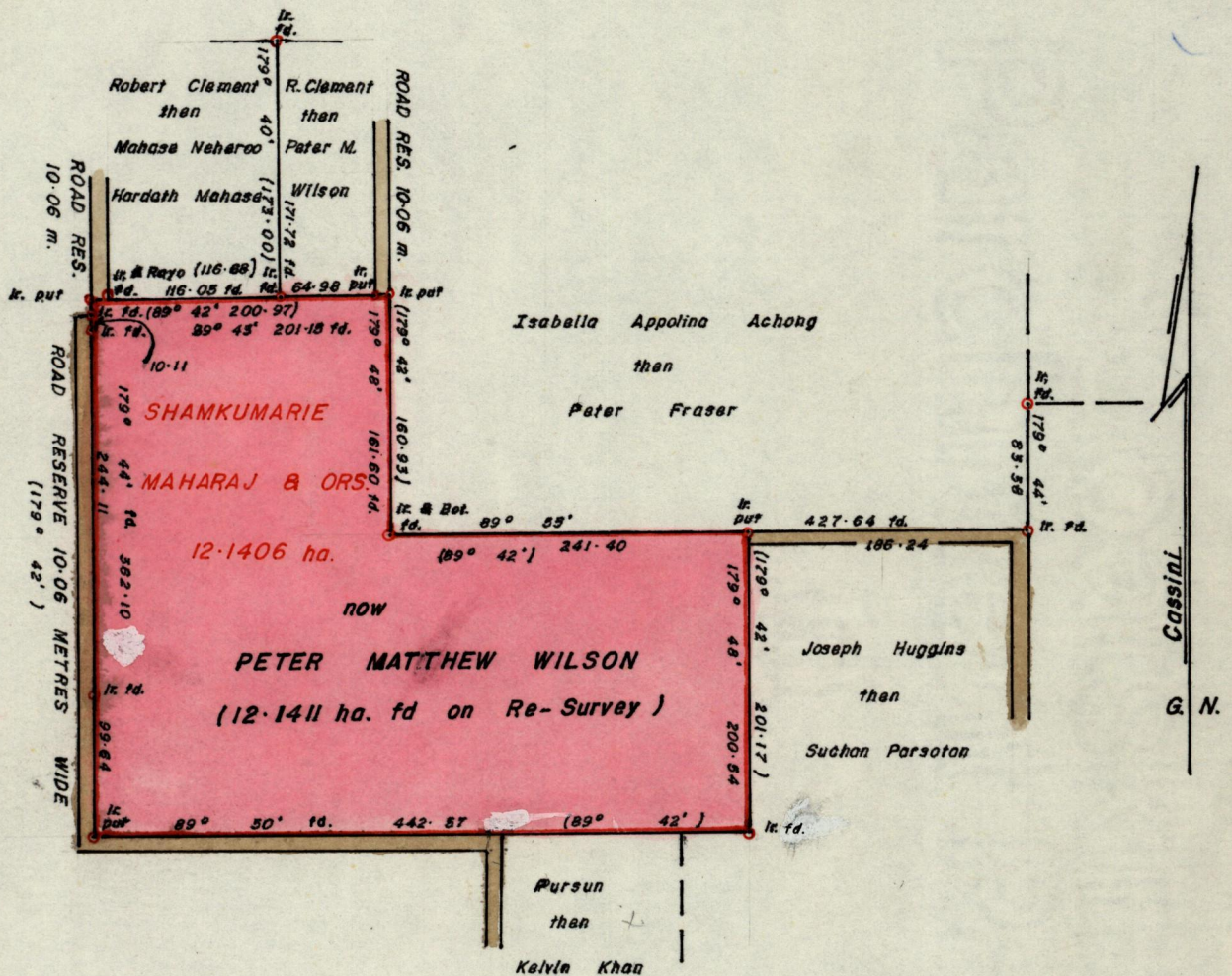
457

No 15948

R.P.O. Vol. 82
C.T. Vol. 2897

Fol. 531
Fol. 385

Ward of Turure
County of St. Andrew
Cadastral Sheet E. B. M. 36D
1/d



Approved

Andrew Thiel
 Director of Surveys
 88.07.14

SCALE 1 / 5000
minutes

Distances are in metres

Note: To obtain compass bearings add/subtract

PLAN of a Parcel of land coloured pink in the Ward of Turure
 Containing twelve point one four one one hectares
 Surveyed by me, with due authority, in May, 1988

I certify that I have complied with rule 76 under section 14(2)(d) of the Land Surveyors' Ordinance 1952, and that this plan is correct.

Checked by *GR 13/7/88*

Andrew Bowler
 Land Surveyor, Trinidad
 12th July 1988

Entered