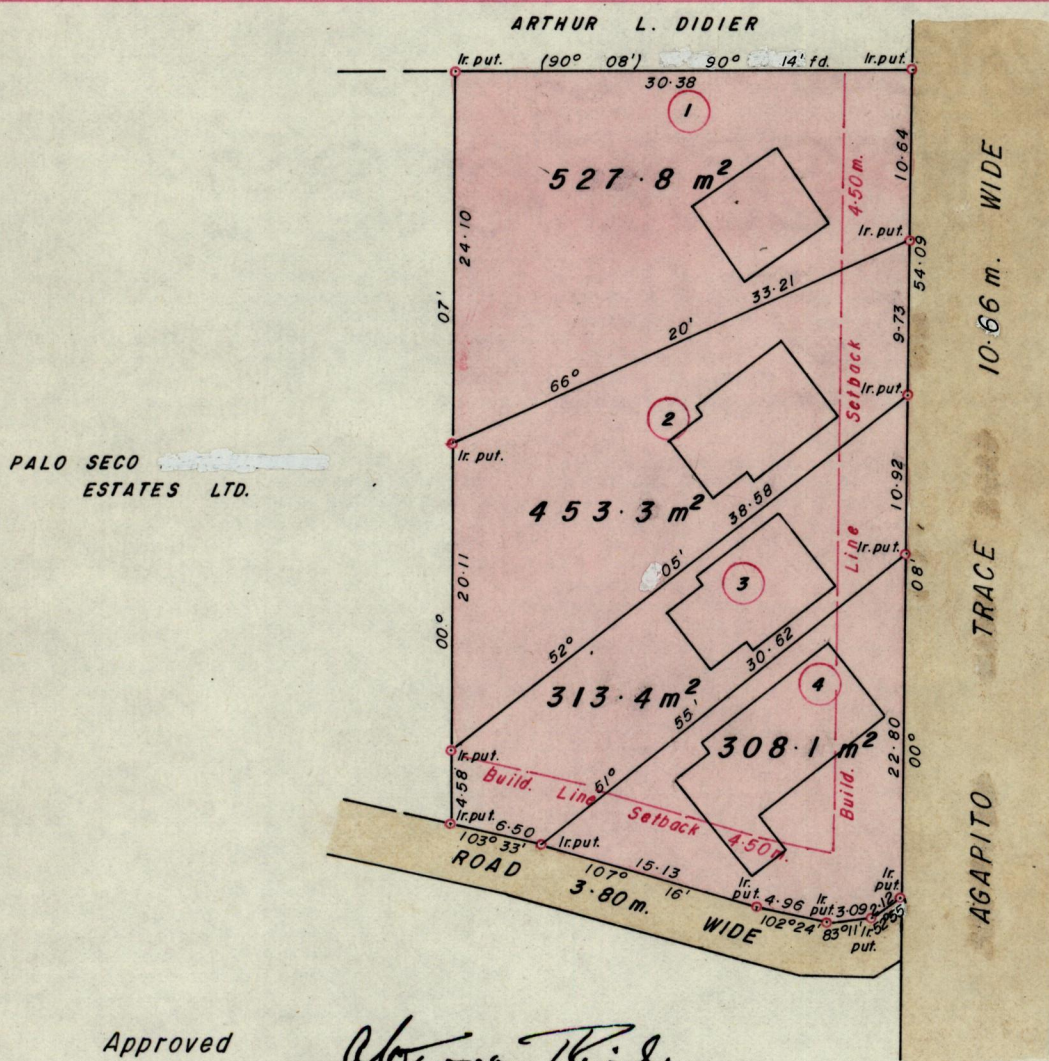
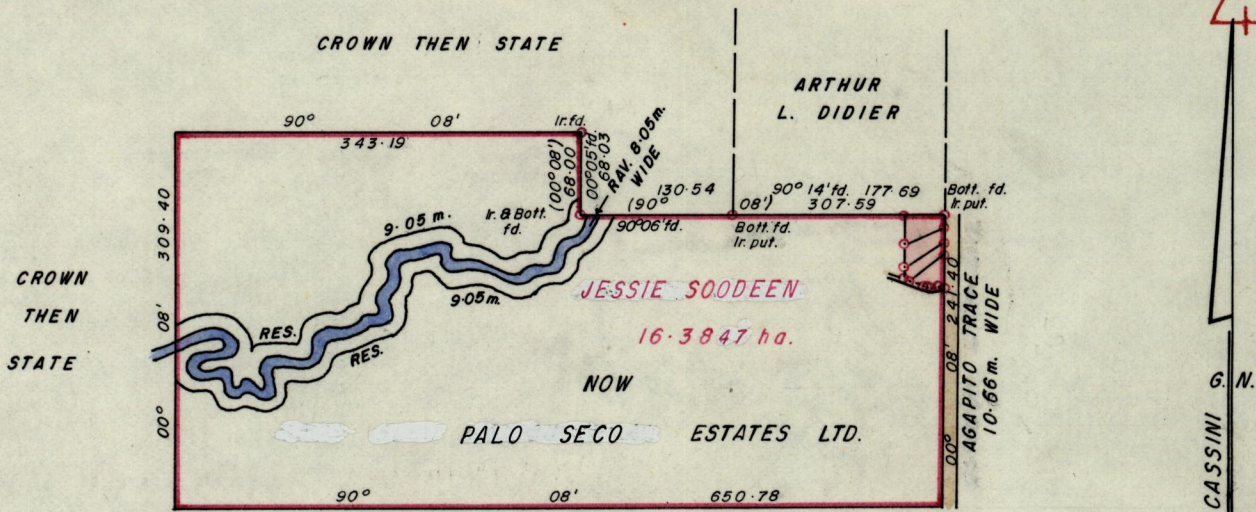


436



Approved

Aboussa Thiele
Director of Surveys
88.06.30

SCALE 1:500

Distances are in Metres.

Bearings are Cassini Grid, based on Solar Obs.
Plan of four Parcels of land coloured Pink in the Ward of Erin.
Containing together one thousand six hundred and two point six square metres.
Surveyed by me, with due authority, in June 1987
I certify that I have complied with rule 76 under section 14 (2) (d) of the
Land Surveyors' Ordinance 1952, and that this plan is correct.
Checked by *GR 29/6/88*
Entered on Land Surveyor, Trinidad 13th June 1988