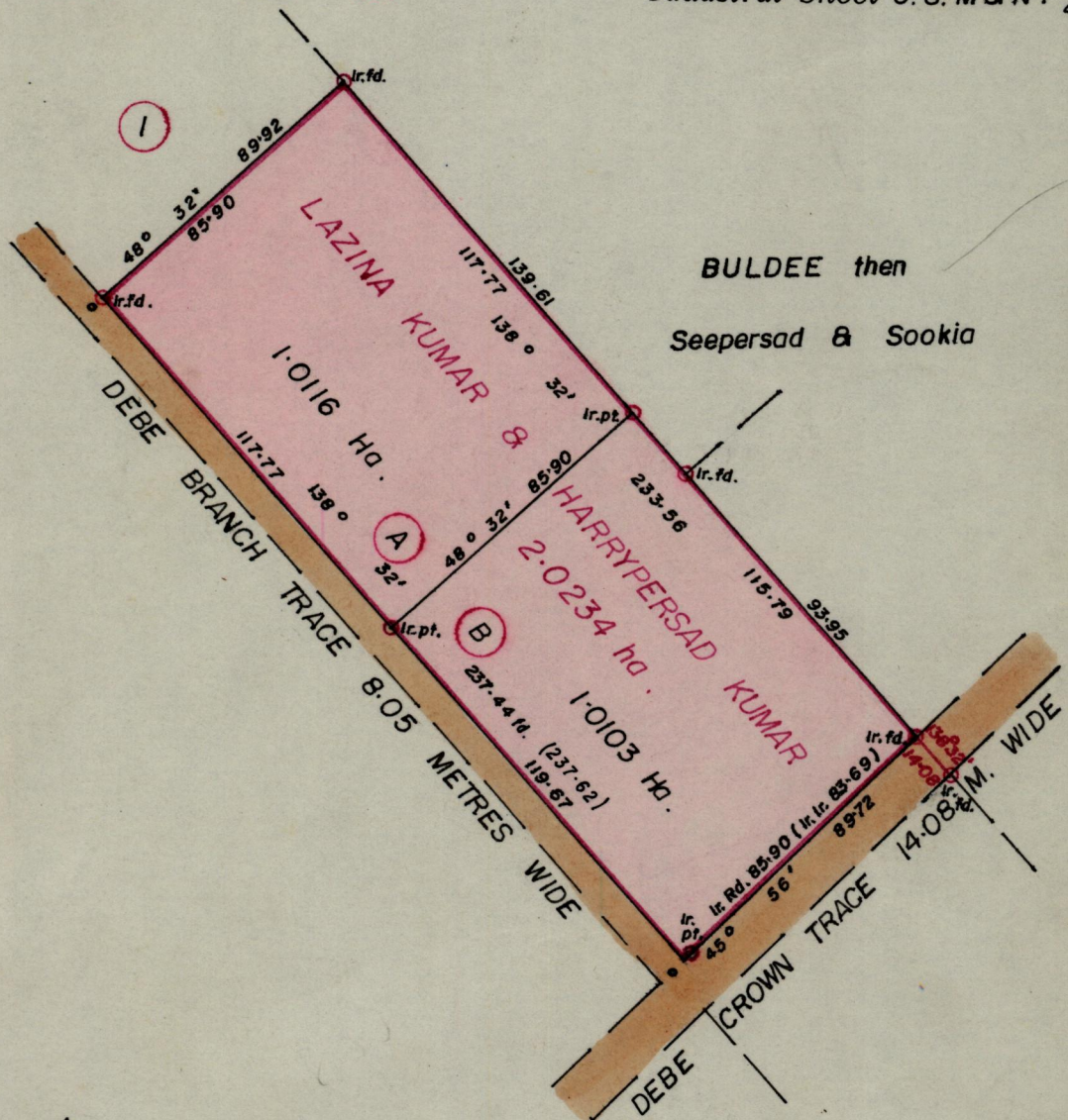


No 13323

R.P.O. Vol. 28
C.T. Vol. 3097

Fol. 157
Fol. 457

Ward of Naparima.
County of Victoria.
Cadastral Sheet G. 8. M & N. $\frac{63B}{4/d}$



Approved

Alvin Thiel
 Director of Surveys
 87.09.17

SCALE 1:2000.

Note: To obtain compass bearings ~~add~~/subtract 2 minutes Distances are in metres.

PLAN of 2 Parcel of land coloured pink in the Ward of Naparima.
Containing together two point zero two one nine hectares.

Surveyed by me, with due authority, in March 1985.

I certify that I have complied with rule 76 under section 14(2)(d) of the Land Surveyors' Ordinance 1952, and that this plan is correct.

Checked by *16/9/87*

G. Sathisharan
 Land Surveyor, Trinidad 9/9/1987