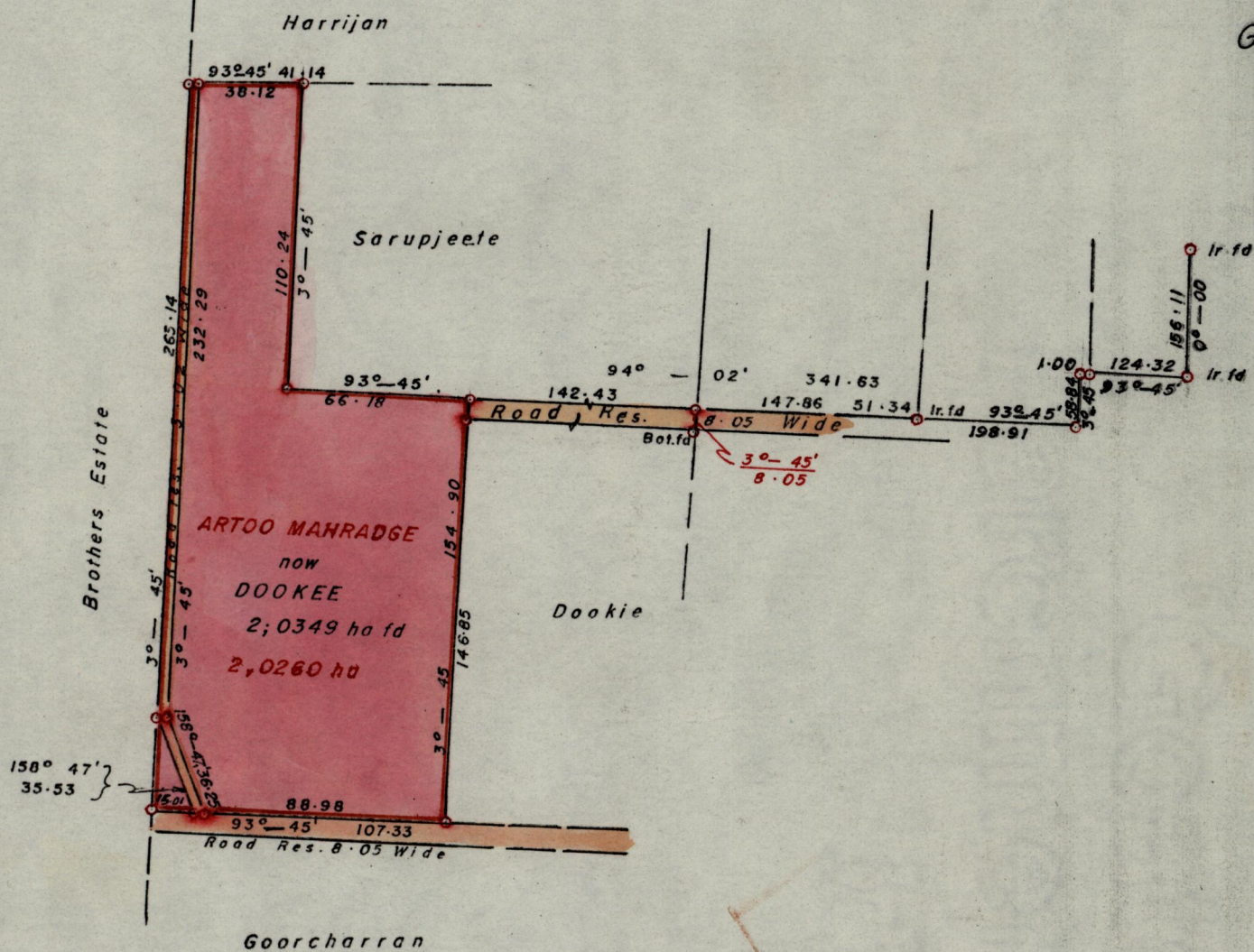


No 20198

R.P.O. Vol. 164 Fol. 623
C.T. Vol. Fol.

Ward of Savana Grande
County of Victoria
Cadastral Sheet G 5. A



Approved

Alfred J. King
 Director of Surveys
 87.07.02

○ Denotes Iron put except otherwise Stated

SCALE

minutes

Distances are in Metres

Note: To obtain compass bearings add/subtract

PLAN of a Parcel of land coloured Pink in the Ward of Savana Grande

Containing Two point Zero three four Nine hectares.

Surveyed by me, with due authority, in May 1985

I certify that I have complied with rule 76 under section 14(2)(d) of the Land Surveyors' Ordinance 1952, and that this plan is correct.

Checked by *[Signature]* 1/7/87

Entered

Land Surveyor, Trinidad

[Signature]
 12th July 1986