

1082

REMAINING PORTION

1155

361

R.P.O. Vol. 126

Fol. 143

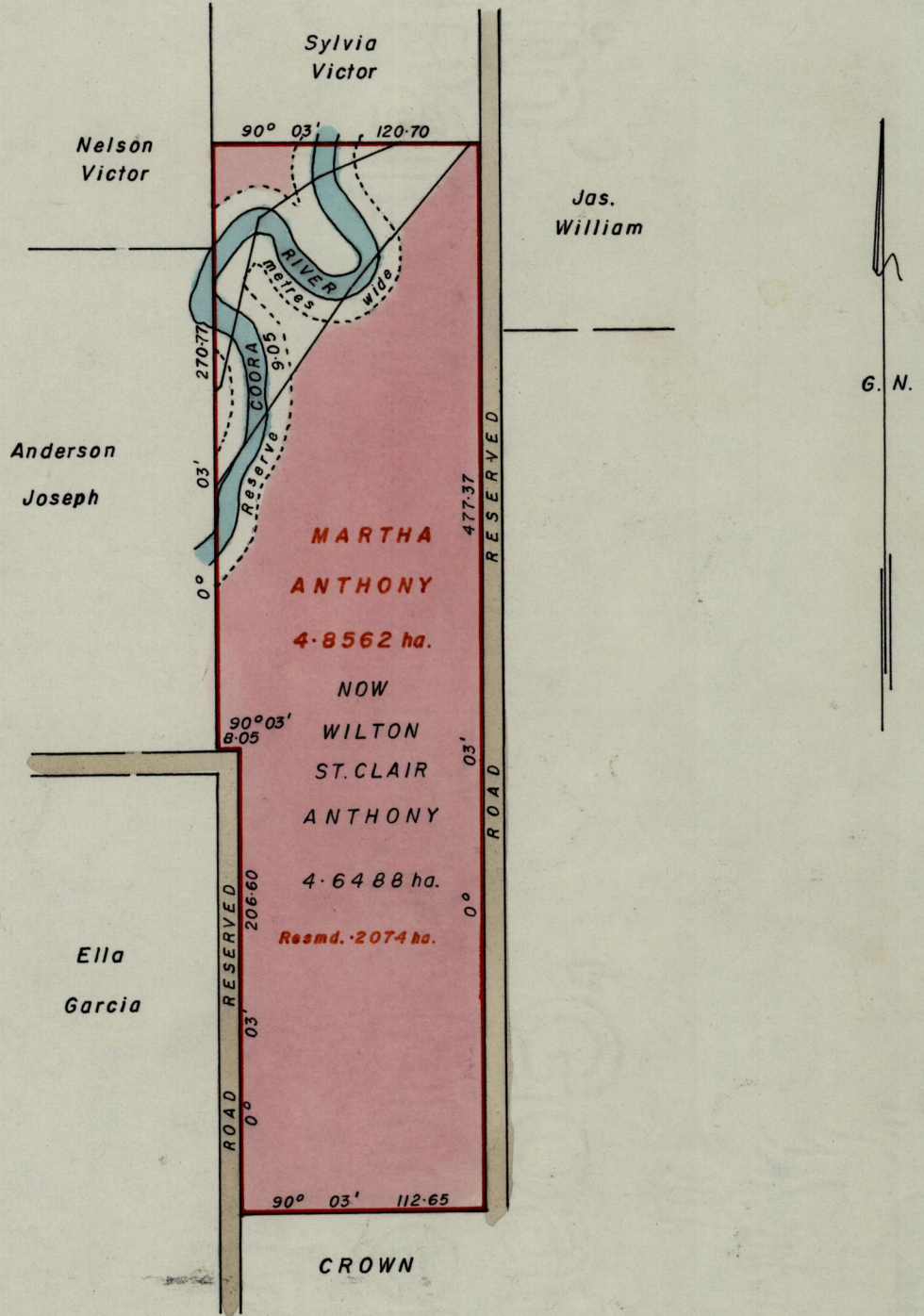
Cadastral Sheet 73B/2/a

C. of T. Vol.

Vol.

Ward of Siparia

County of St. Patrick



Approved

Albert H. Hines
 Director of Surveys
 87.06.29

SCALE 1 - 3168

Note: To obtain compass bearings

add 3 minutes
subtract

Distances are in metres

This is a true copy of a diagram of Four point eight five six two hectares originally granted to MARTHA ANTHONY, shewing a portion coloured pink and containing Four point six four eight eight hectares being the remainder after one resumption ~~previous transfer~~ of another portion of the land. the dividing lines having been run in conformity with Rule 76 under Sec. 7(d) of Cap. 27. No. 2 and duly certified by the Director of Surveys.

Checked by *A. 87-6-28*

Entered on

Albert Hines
 Land Surveyor, Trinidad, 15 May 1907