

R.P.O. Vol. 438

Fol. 435

Cadastral Sheet F. 19. B. & C.

72A
1/a

C. of T. Vol. 1603

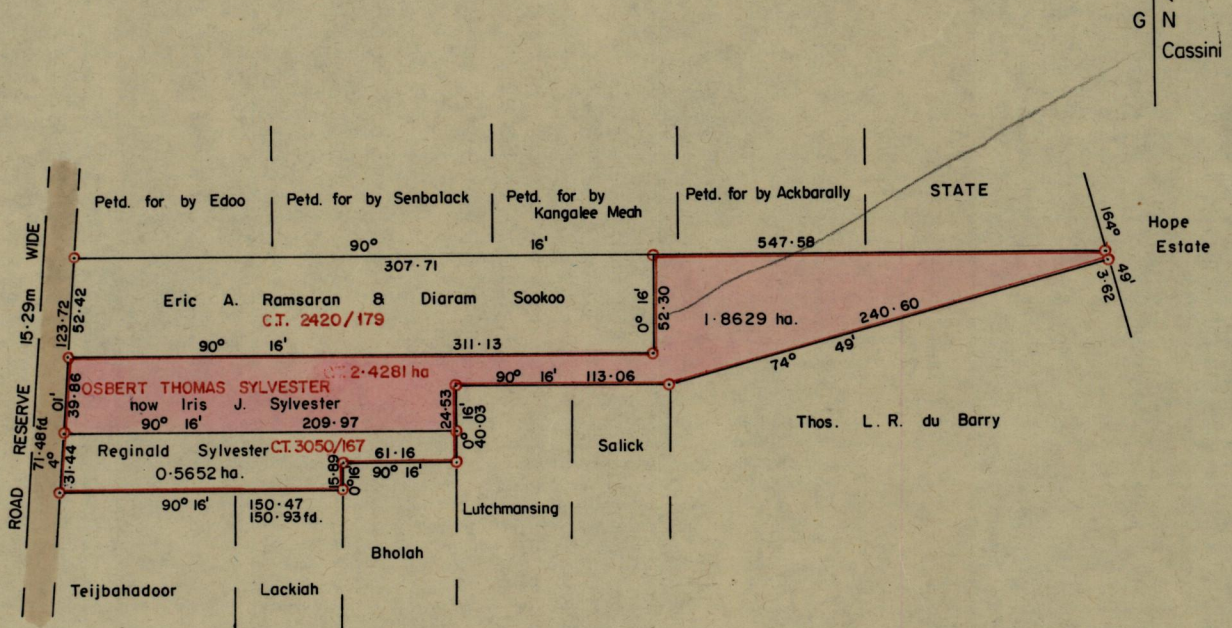
Fol. 379

1155

Ward of Cedros

County of St. Patrick

356



Approved

A. M. ...
 As. Director of Surveys
 87.06.29

SCALE 1/4000

Note: To obtain compass bearings ^{add} 16 _{subtract} minutes

Distances are in metres

This is a true copy of a diagram of two point four two eight one hectares originally transferred granted to Osbert Thomas Sylvester, shewing a portion coloured pink and containing one point eight six two nine hectares being the remainder after one (1) previous transfer of another portion of the land. the dividing lines having been run in conformity with Rule 76 under Sec. 7 (d) of Cap. 27. No. 2 and duly certified by the Director of Surveys.

Checked by *A. 87.6.25*
 Entered on

Arnold A. S. Ramon Fortuon A.R.I.C.S.
 Land Surveyor, Trinidad, 14th January 1987.