

REMAINING PORTION

1155

349

R.P.O. Vol. 12 Fol. 77

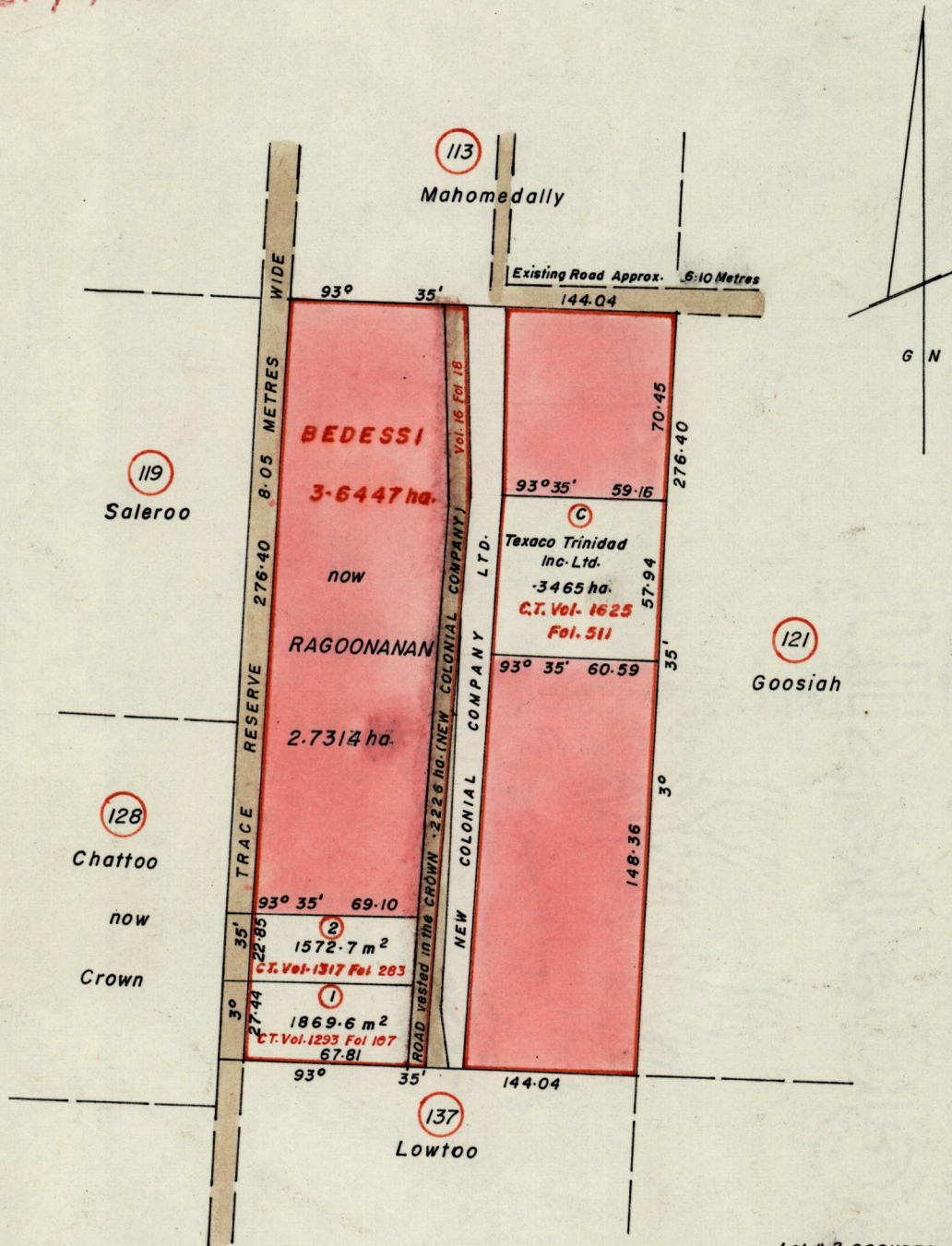
Cadastral Sheet G.9.M, 64A
3/c, 3/d

C. of T. Vol. 751 Vol. 147

Ward of Naparima

Vb/31747ol58

County of Victoria



Lot # 2 SOOKDEO & BABOONEE
Lot # 1 RAMDIN & RAJPATEAH

Approved

[Signature]
Director of Surveys
87.06.16

SCALE 1/2500

Note: To obtain compass bearings add 0 minutes
subtract

Distances are in metres

This is a true copy of a diagram of three point six four four seven hectares originally transferred granted to BEDESSI, shewing a portion coloured pink and containing two point seven three one four hectares being the remainder after one vesting and three previous transfers of another portions of the land. the dividing lines having been run in conformity with Rule 76 under Sec. 7(d) of Cap. 27. No. 2 and duly certified by the Director of Surveys.

Checked by *[Signature]* 87-6-16

Entered on

[Signature]
Land Surveyor, Trinidad, 20 February 1987