

REMAINING PORTION

R.P.O. Vol. 57 Fol. 569

Cadastral Sheet A. 20 H.  $\frac{13 E}{4/a}$

C. of T. Vol. 1721 Vol. 37

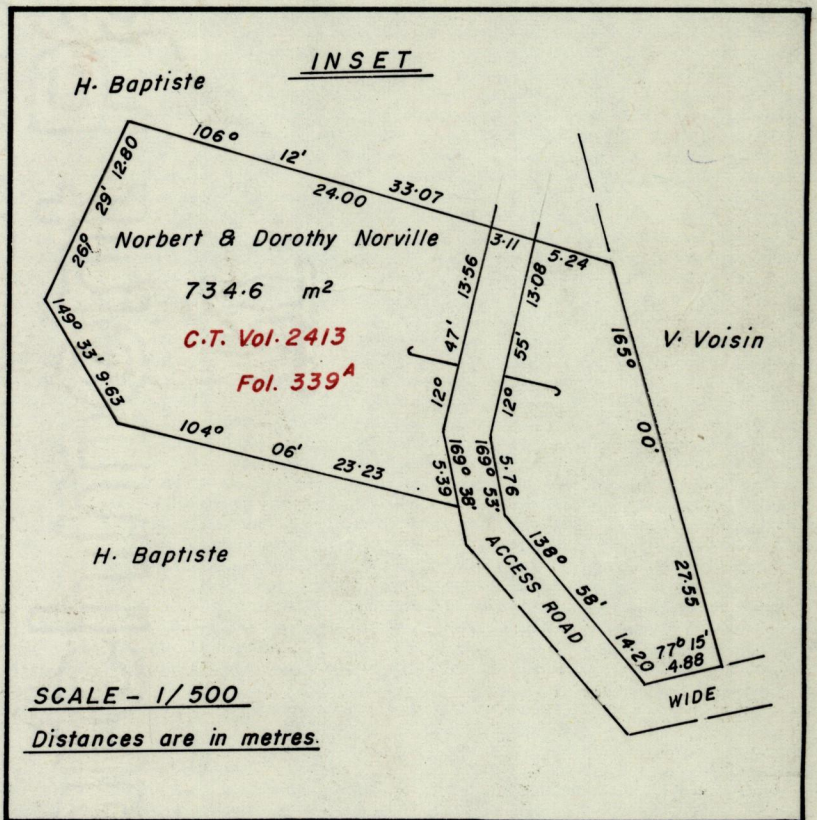
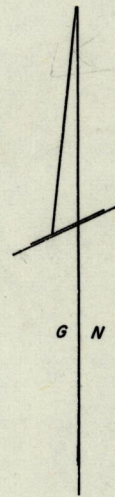
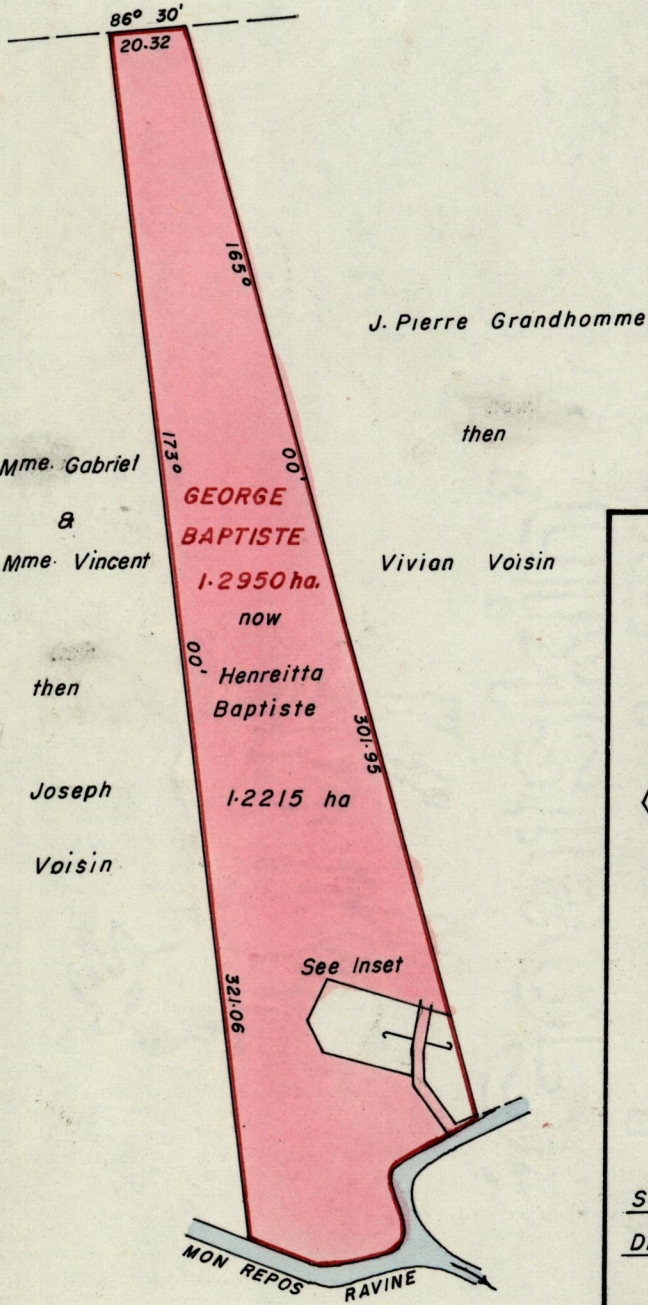
Ward of St Anns

County of St George

Milton & Harold Henry

now

Beloney Julian



Approved

*Alwyn Thiel*  
 Director of Surveys 87.06.09  
 Bearings are based on Solar Observations  
 Note: To obtain ~~compass~~ true bearings ~~add~~ subtract 1 minutes

SCALE— 1/2000

Distances are in metres

This is a true copy of a diagram of one point two nine five zero hectares originally transferred granted to GEORGE BAPTISTE, shewing a portion coloured pink and containing one point two two one five hectares being the remainder after one previous transfer of another portion of the land. the dividing lines having been run in conformity with Rule 76 under Sec. 7(d) of Cap. 27. No. 2 and duly certified by the Director of Surveys.

Checked by *87.6.5*

Entered on

*Land Surveyor, Trinidad*, ..... 19.....