

No 8545

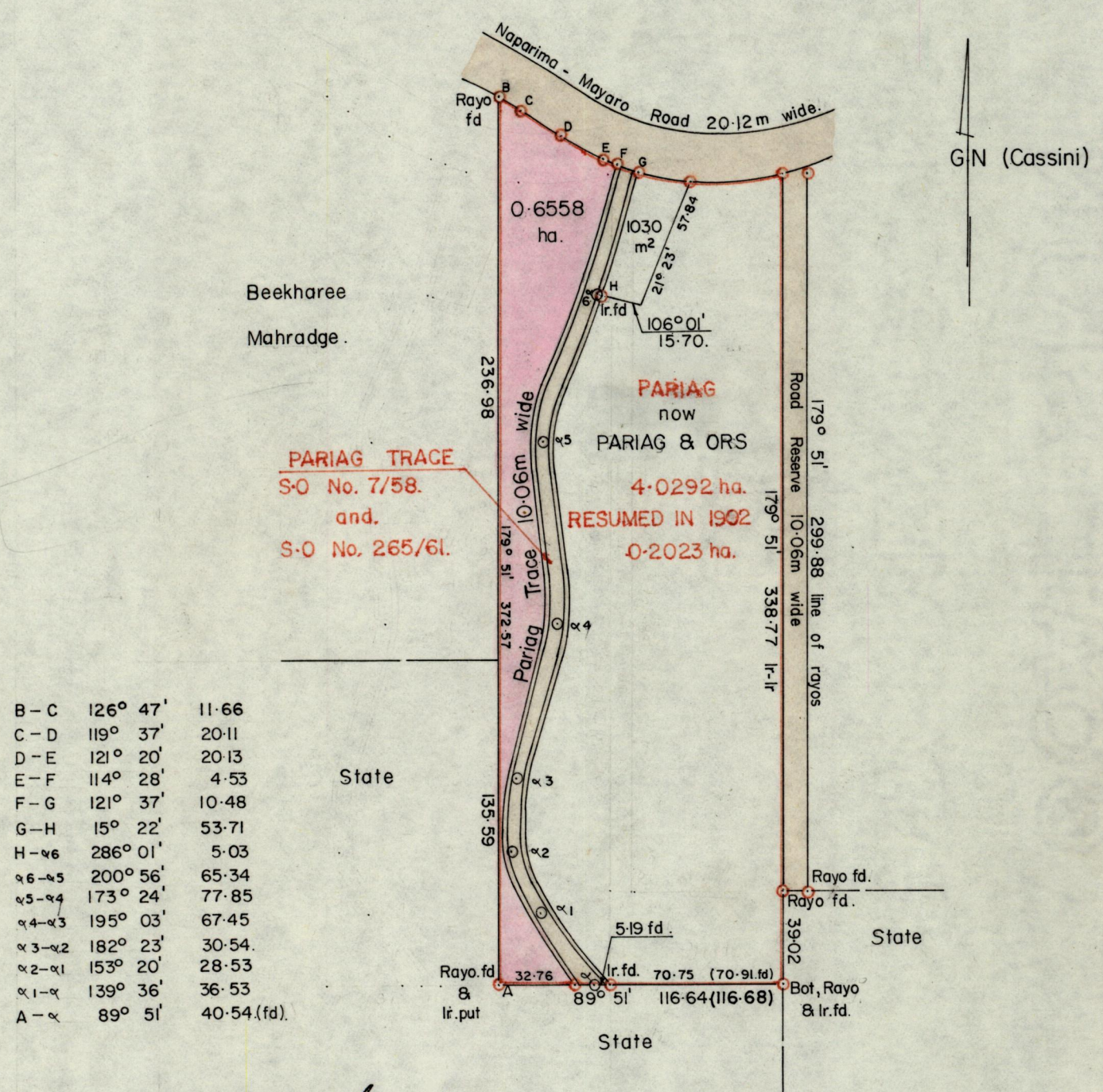
1155

314

R.P.O. Vol. 54
C.T. Vol. 1004

Fol. 73
Fol. 153

Ward of Charuma.
County of Nariva.
Cadastral Sheet $\frac{55B}{3/c}$ (H.2-A)



B - C	126° 47'	11.66
C - D	119° 37'	20.11
D - E	121° 20'	20.13
E - F	114° 28'	4.53
F - G	121° 37'	10.48
G - H	15° 22'	53.71
H - α6	286° 01'	5.03
α6 - α5	200° 56'	65.34
α5 - α4	173° 24'	77.85
α4 - α3	195° 03'	67.45
α3 - α2	182° 23'	30.54
α2 - α1	153° 20'	28.53
α1 - α	139° 36'	36.53
A - α	89° 51'	40.54.(fd).

Approved *K.B. Joseph*
Director of Surveys
87.3.06

SCALE 1:2500

Note: To obtain compass bearings add/subtract 9 minutes Distances are in METRES

PLAN of a Parcel of land coloured pink in the Ward of Charuma.

Containing zero point six five five eight hectares.

Surveyed by me, with due authority, in March and April 1986.

I certify that I have complied with rule 76 under section 14(2)(d) of the Land Surveyors' Ordinance 1952, and that this plan is correct.

Checked by *A.S.7-3-6*

Anthony Lopez
Land Surveyor, Trinidad 24th July 1986

Entered