

1155

L. & S.—54

301

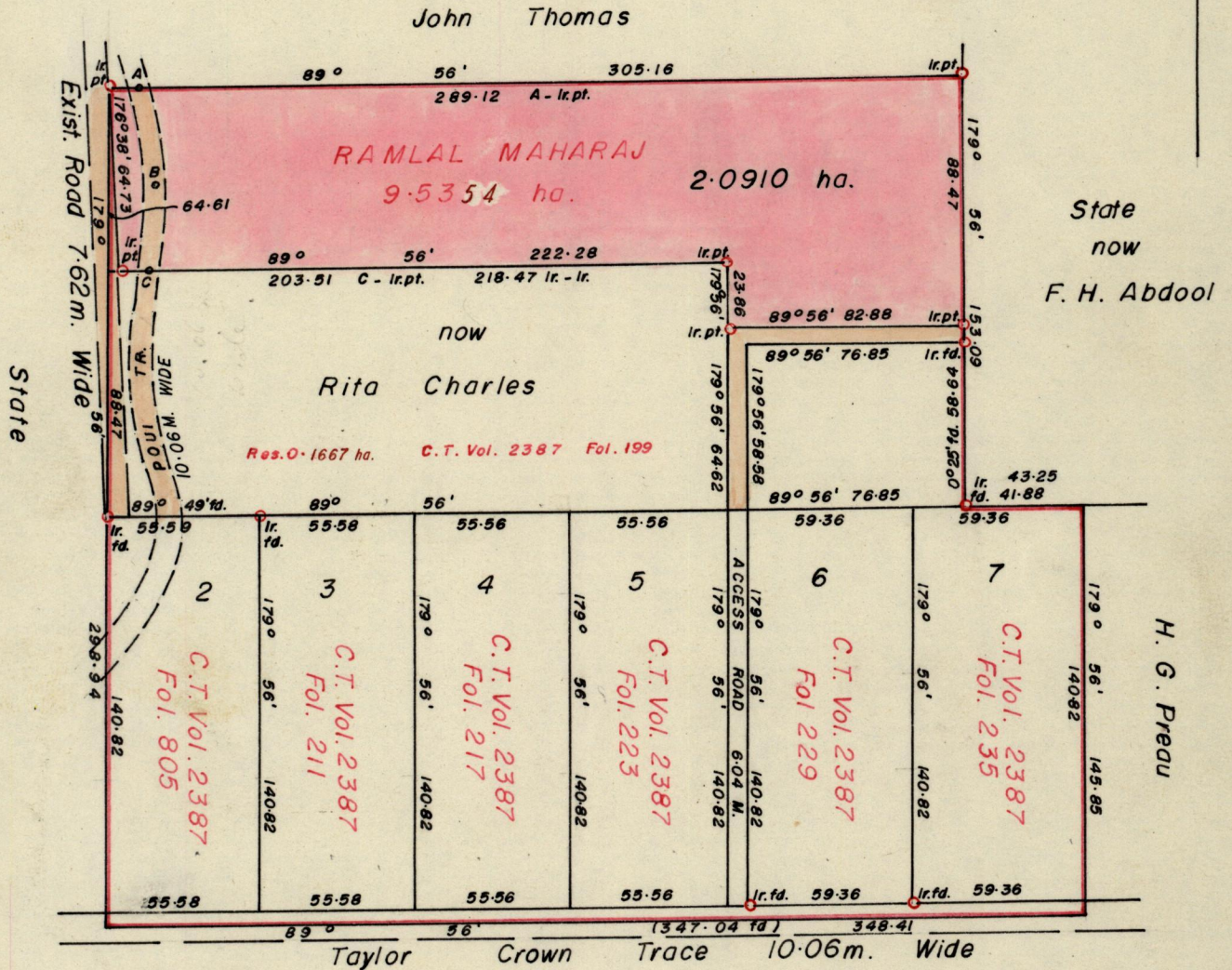
No 17824

R.P.O. Vol. 43
C.T. Vol. 740

Fol. 601
Fol. 113

Ward of Savana Grande
County of Victoria
Cadastral Sheet G.10.N.

GN



STA. ALONG $\frac{1}{2}$ OF ROAD

Sta.	Bearings	Dist.
A - B	169° 30'	35.00
B - C	186° 45'	30.40

Approved

YCB
Director of Surveys
87.2.13

SCALE 1 : 2500

Note: To obtain compass bearings add/subtract 4 minutes Distances are in Metres

PLAN of a Parcel of land coloured pink in the Ward of Savana Grande
Containing two point zero nine one zero hectares
Surveyed by me, with due authority, in Dec. 1985

I certify that I have complied with rule 76 under section 14(2)(d) of the
Land Surveyors' Ordinance 1952, and that this plan is correct.

Checked by *87-2-13* *James Ramcharan*

Entered Land Surveyor, Trinidad 31st December 1985