

Nº 47340

1155

2333

R.P.O. Vol. 125
C.T. Vol. 2496

Fol. 145
Fol. 413

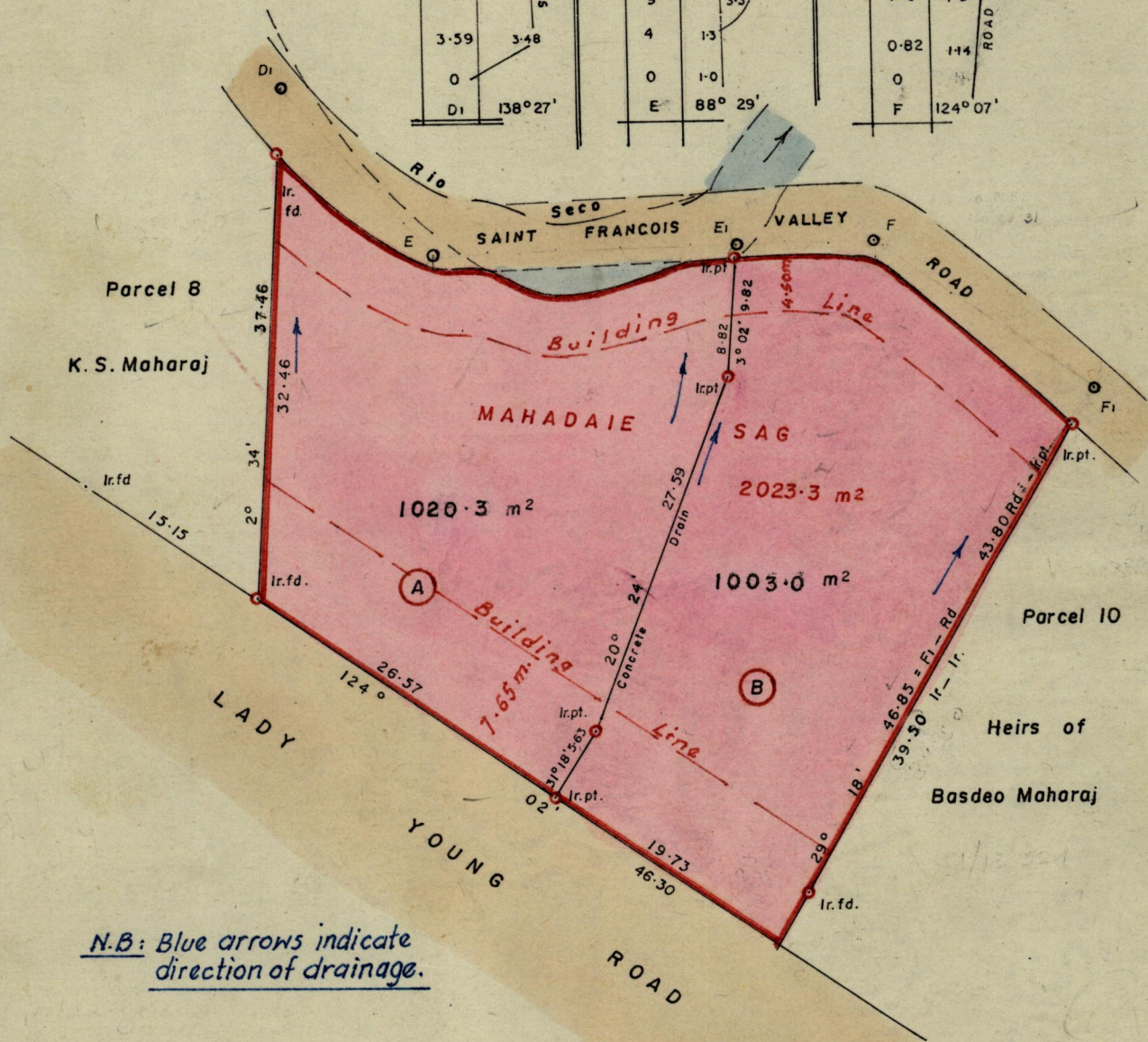
Ward of St. Anns
County of St. George
Cadastral Sheet A.20-H. 13 E
3/b

| | |
|-------|----------|
| E | |
| 16.58 | 1.0 |
| 13.5 | 2.30 |
| 3.59 | 3.48 |
| 0 | |
| D1 | 138° 27' |

| | |
|-------|---------|
| F | |
| 32.49 | 1.4 |
| 29.0 | 0.7 |
| 22.41 | 1.0 |
| 19.0 | 1.0 |
| 13.7 | 2.6 |
| 9 | 3.3 |
| 4 | 1.3 |
| 0 | 1.0 |
| E | 88° 29' |

| | |
|-------|----------|
| F1 | |
| 19.51 | 3.05 |
| 7.0 | 3.04 |
| 0.82 | 1.5 |
| 0 | 1.14 |
| F | 124° 07' |

G. N.
(Cassini)



N.B: Blue arrows indicate direction of drainage.

Approved

M.B. Joseph
Director of Surveys
87.1.30

SCALE : 1/500

Note: To obtain compass bearings ~~add~~ subtract 1 minutes Distances are in metres
PLAN of ~~4~~ 2 Parcels of land coloured pink in the Ward of St. Anns
Containing

Surveyed by me, with due authority, in July 1986

I certify that I have complied with rule 76 under Section 14 (2) (d) of the Land Surveyors' Ordinance 1952, and that this plan is correct.

Checked by *GR 30/1/87*

Land Surveyor, Trinidad
18th August 1986

Entered.....