

No

17949

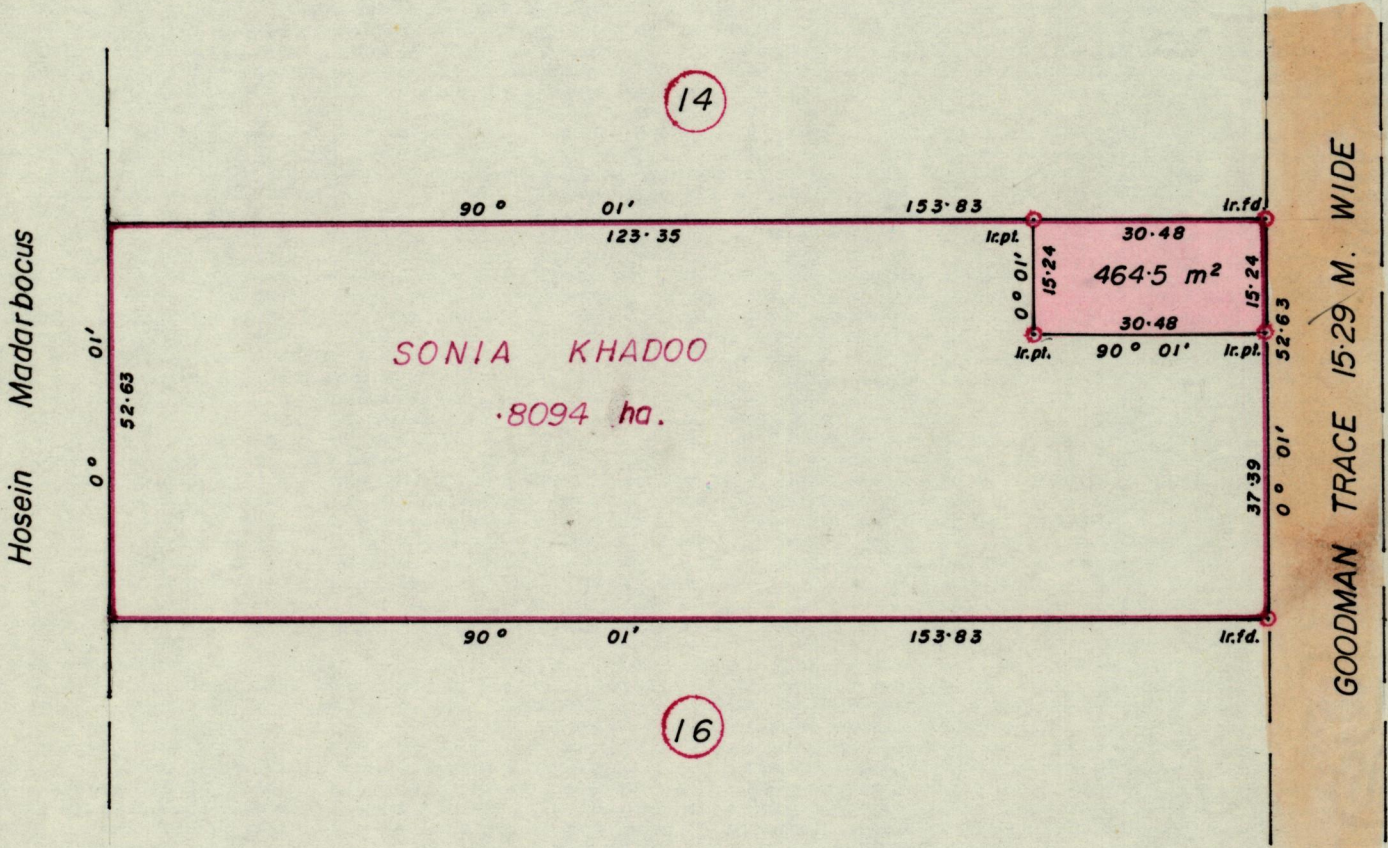
1155

282

R.P.O. Vol. 131 Fol. 121
C.T. Vol. 1938 Fol. 125

Ward of Siparia .
County of St. Patrick .
Cadastral Sheet G.18.C.

G N



Approved

K.B. Louch
Director of Surveys
27.1.23

SCALE 1:1000

Note: To obtain compass bearings add/subtract / minutes Distances are in metres

PLAN of a Parcel of land coloured pink in the Ward of Siparia .
Containing four hundred and sixty four point five sq. metres .
Surveyed by me, with due authority, in August 1986 .

I certify that I have complied with rule 76 under section 14(2)(d) of the
Land Surveyors' Ordinance 1952, and that this plan is correct.

Checked by *GR 23/1/87* *Stacy A. Pratt*

Entered Land Surveyor, Trinidad 21.8.80