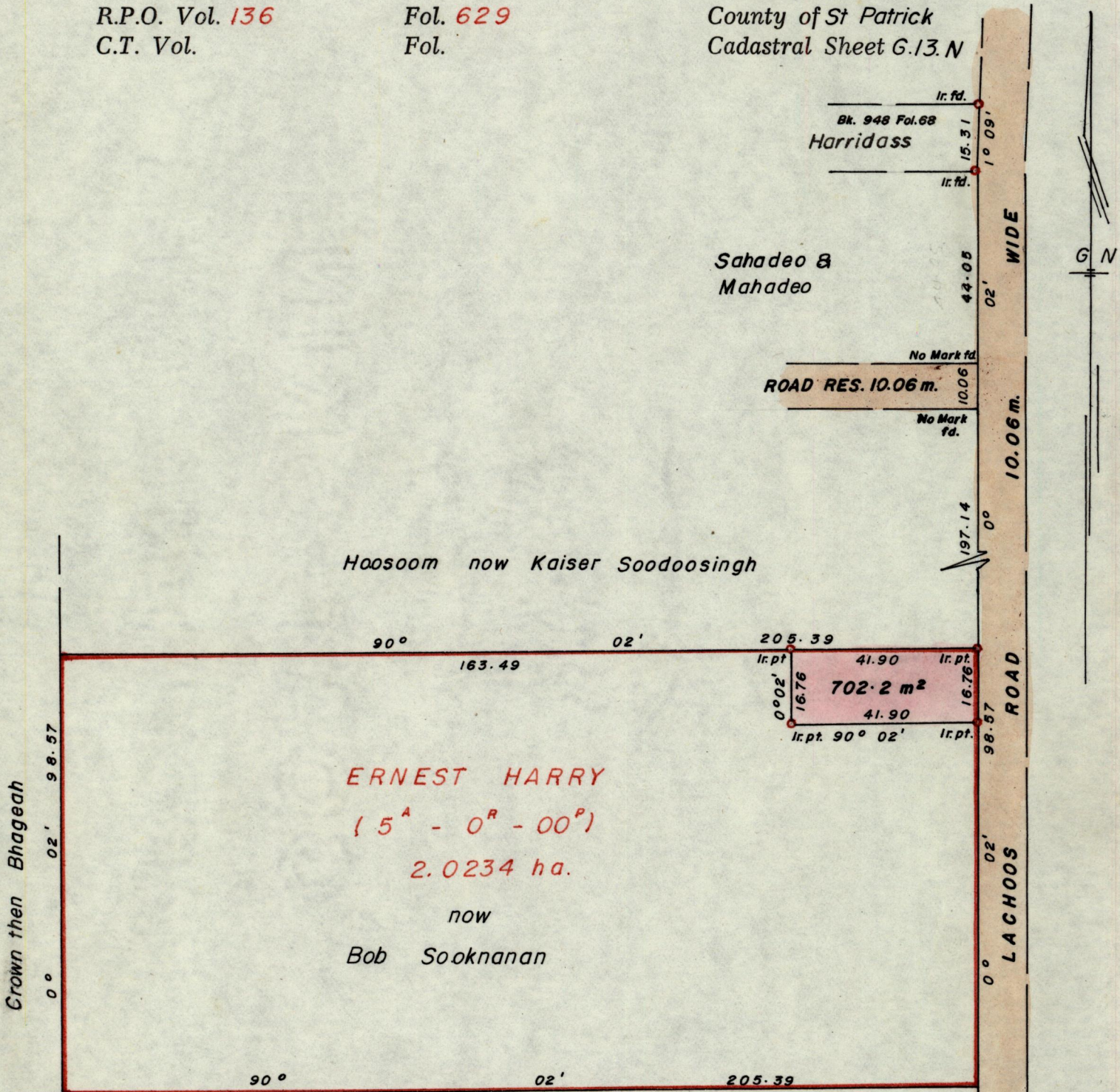


No 8759

R.P.O. Vol. 136
C.T. Vol.

Fol. 629
Fol.

Ward of Siparia
County of St Patrick
Cadastral Sheet G.13.N



Approved

[Signature]
Director of Surveys
87.01.12

Crown then Rajwantia

SCALE 1:1250

Note: To obtain compass bearings ~~add~~/subtract 2 minutes Distances are in metres

PLAN of a Parcel of land coloured pink in the Ward of Siparia

Containing seven hundred and two point two sq. metres

Surveyed by me, with due authority, in September 1985

I certify that I have complied with rule 76 under section 14(2)(d) of the Land Surveyors' Ordinance 1952, and that this plan is correct.

Checked by *[Signature]* 87.01.12

[Signature]

Entered

Land Surveyor, Trinidad 27th September 1986