

No 3790

1155

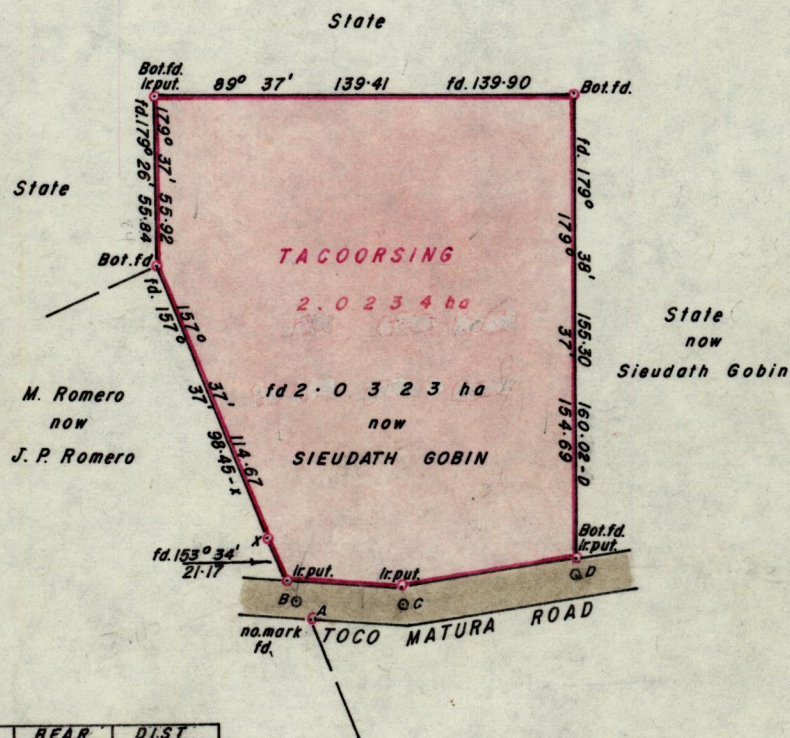
269

R.P.O. Vol. 92  
C.T. Vol.

Fol. 277  
Fol.

Ward of Matura  
County of St. Andrew  
Cadastral Sheet C.18.B. & 16.D

S.O.174/20



STA.	BEAR.	DIST.
X - B	153° 34'	24.17 fd.
A - B	332° 37'	6.04
B - C	90° 47'	35.06
C - Ir.put.	356° 26'	5.06
C - D	80° 06'	57.73

Approved

*Alwyn Thilly*  
 Director of Surveys  
 87.06.08

SCALE 1:2500

Note: To obtain compass bearings add/subtract 23 minutes Distances are in Metres

PLAN of a Parcel of land coloured pink in the Ward of Matura  
Containing two point zero three two three hectares

Surveyed by me, with due authority, in January 1984

I certify that I have complied with rule 76 under section 14(2)(d) of the  
Land Surveyors' Ordinance 1952, and that this plan is correct.

Checked by *GR 8/1/87*

Entered .....

*Henry Thomas*  
 Land Surveyor, Trinidad ..... 19.....