

1155

267

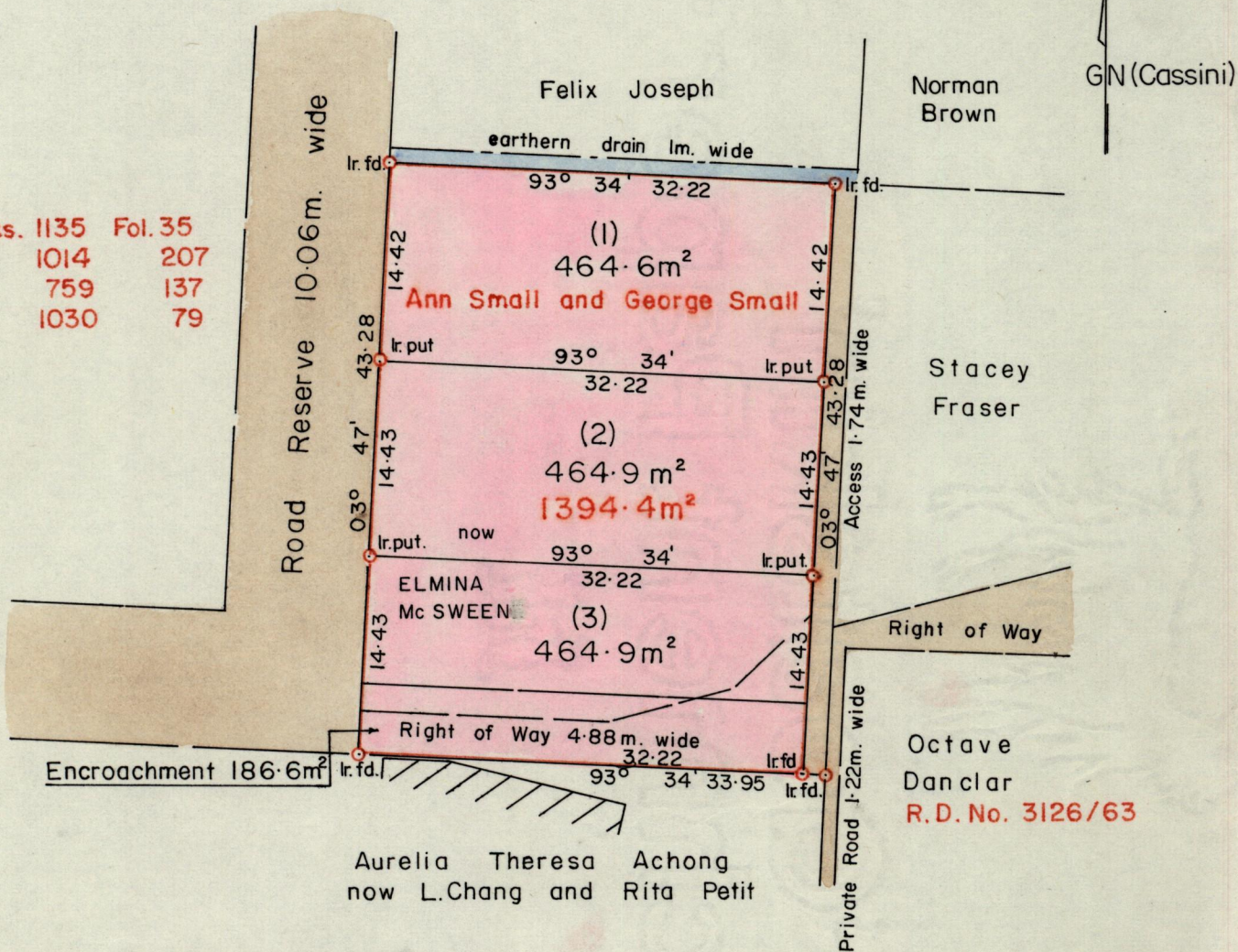
No 14294

R.P.O. Vol. C.T. Vol. 1916

Fol. Fol. 347

Ward of St. Anns County of St. George Cadastral Sheet 13E (B.17.I) 4/d

See Bks. 1135 Fol. 35 1014 207 759 137 1030 79



Approved

[Signature]
Director of Surveys
87.01.02

SCALE 1:500

Note: To obtain compass bearings add/subtract

minutes

Distances are in METRES

PLAN of a Parcel of land coloured pink in the Ward of St. Anns

Containing together one thousand three hundred and ninety-four point four square metres.

Surveyed by me, with due authority, on November 21, 1984 for Elmina Mc Sween.

I certify that I have complied with rule 76 under section 14(2)(d) of the Land Surveyors' Ordinance 1952, and that this plan is correct.

Checked by *[Signature]* 2/1/87

[Signature]

Entered

Land Surveyor, Trinidad 10th July 1985