

No 18921

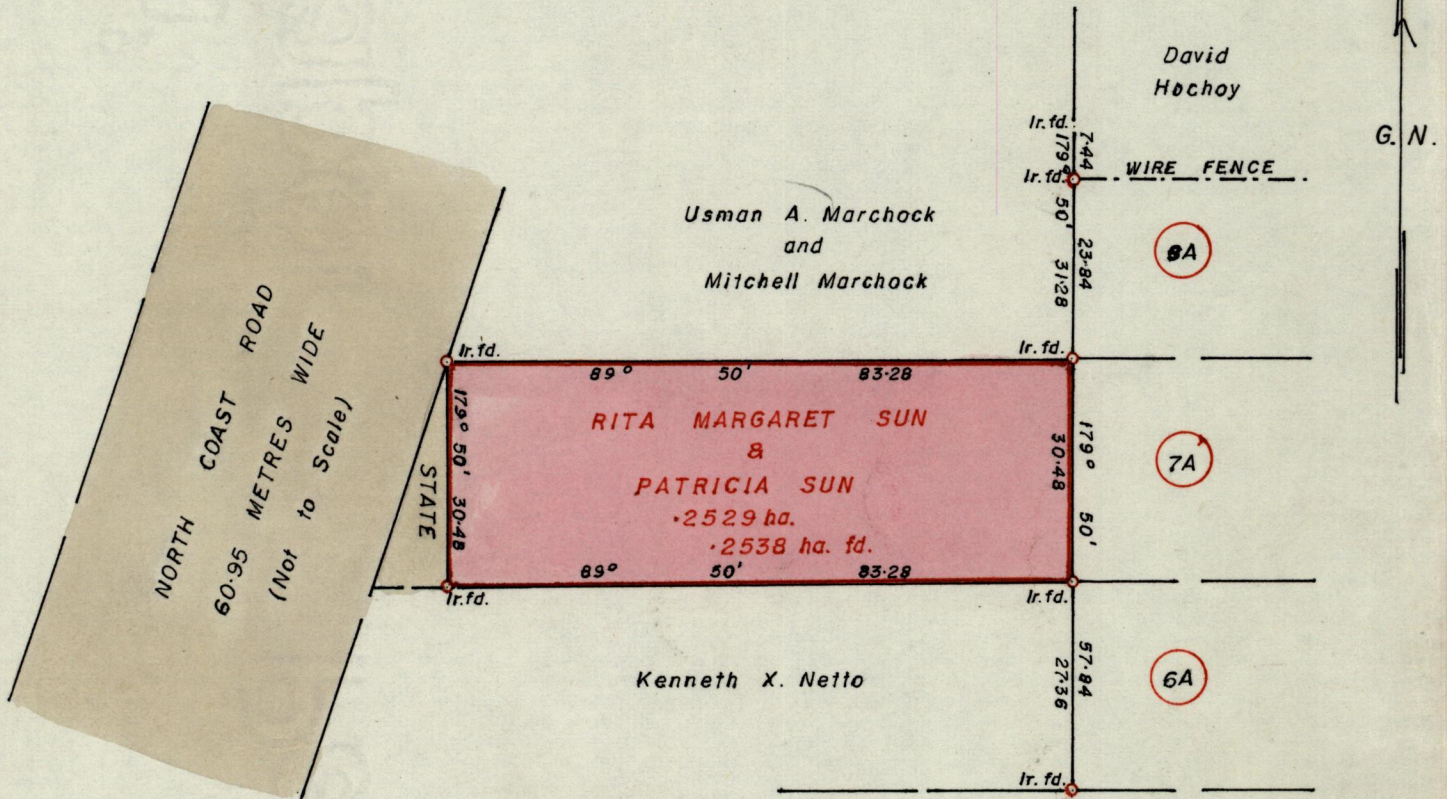
1155

265

R.P.O. Vol. 357
C.T. Vol. 1872

Fol. 543
Fol. 141

Ward of Blanchisseuse
County of St. George
Cadastral Sheet 4A & D
2/b



Approved

Alfred Thibault
 Director of Surveys
 87.01.02

SCALE 1 - 1000

Note: To obtain compass bearings add/~~subtract~~ 10 minutes Distances are in metres.

PLAN of a Parcel of land coloured pink in the Ward of Blanchisseuse
Containing Point Two five three eight hectares.

Surveyed by me, with due authority, in June 1986

I certify that I have complied with rule 76 under section 14(2)(d) of the
Land Surveyors' Ordinance 1952, and that this plan is correct.

Checked by *[Signature]* 2/1/87

[Signature]

Entered Land Surveyor, Trinidad 10th December 1986