

No 19185

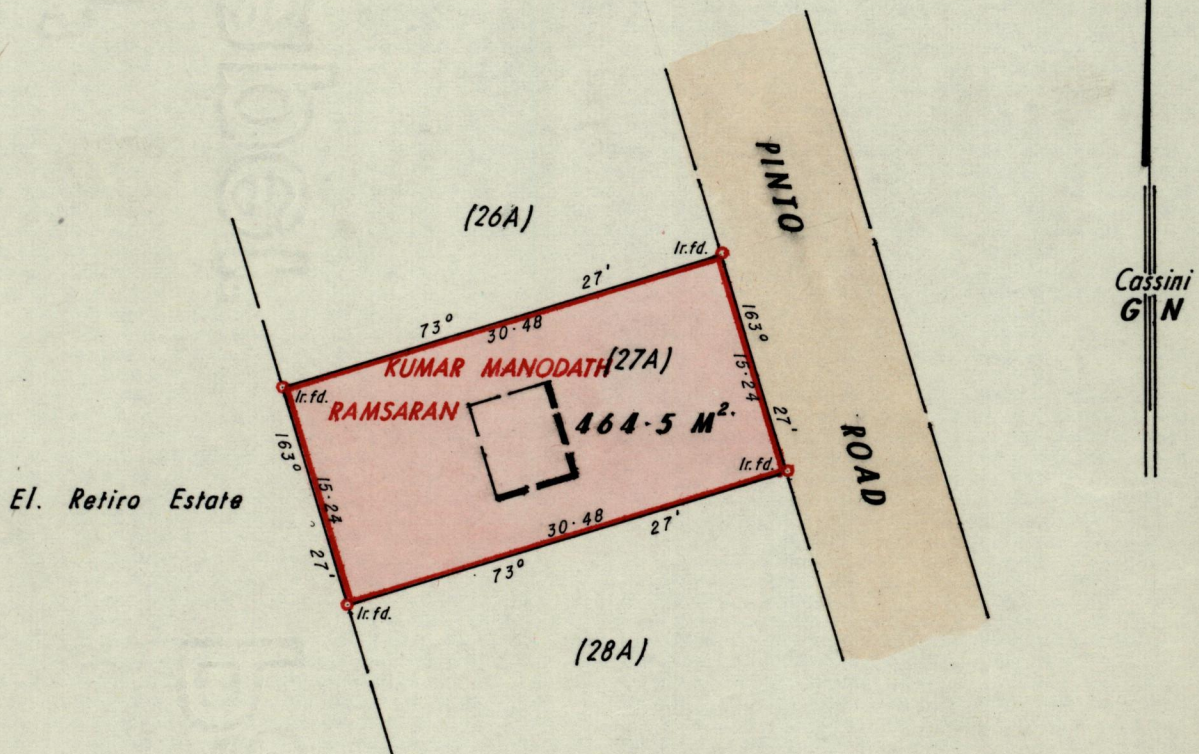
1155

25()

R.P.O. Vol.  
C.T. Vol. 2818.

Fol.  
Fol. 239

Ward of Arima  
County of St George  
Cadastral Sheet B 25 A, 24 C.



Approved

*A. W. ...*  
 Director of Surveys  
 86.12.15

SCALE 1:500.

Note: To obtain compass bearings add/~~subtract~~ 10 minutes Distances are in metres.

PLAN of a Parcel of land coloured pink in the Ward of Arima.  
 Containing four hundred and sixty four point five square metres.  
 Surveyed by me, with due authority, in November 1986.

I certify that I have complied with rule 76 under section 14(2)(d) of the Land Surveyors' Ordinance 1952, and that this plan is correct.

Checked by *...* 86.12.12 *...*

Entered *...* Land Surveyor, Trinidad 9<sup>th</sup> Decemb 1986