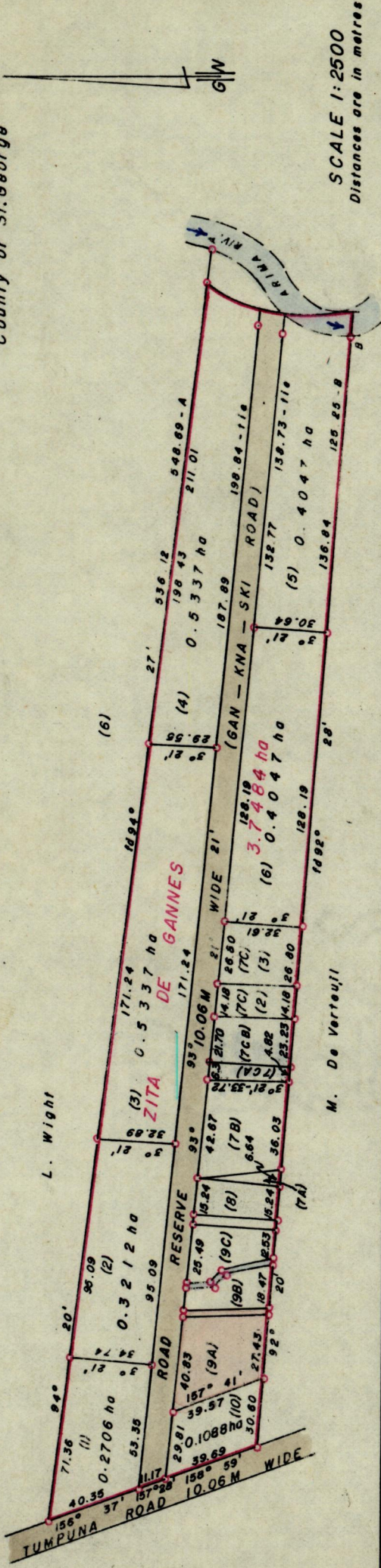


C.T. Vol. II Fol. 1389
 C.T. Vol. 1331 Fol. 177

Cadastral Sheet B. 25. A
 Ward of Arima
 County of St. George



SCALE 1:2500
 Distances are in metres

PARCEL 1-10	
(1) M. KNAGGS Vol. 1718 : 85	(6) J.A.M.B.E. KNAGGS Vol. 1718 : 75
(2) M. KNAGGS Vol. 1718 : 85	(7) See C.T. Vol. 1981 fol. 491
(3) J.A.R. KNAGGS Vol. 1697 : 325	(8) M.D. De Verreuil Vol. 1763 : 413
(4) J. KNAGGS Vol. 1718 : 91	(9)
(5) P. SKINNER & F. LLANOS (Vol. 1719 : 67)	(10) D. B.F. LLANOS Vol. 1718 : 63
(7B) C.T. Vol. 1981 fol. 499	(7A) C.T. Vol. 1981 fol. 499

Approved: *M. De Verreuil*
 Director of Surveys 86.12.04
 Note: To obtain compass bearings add 10 minutes

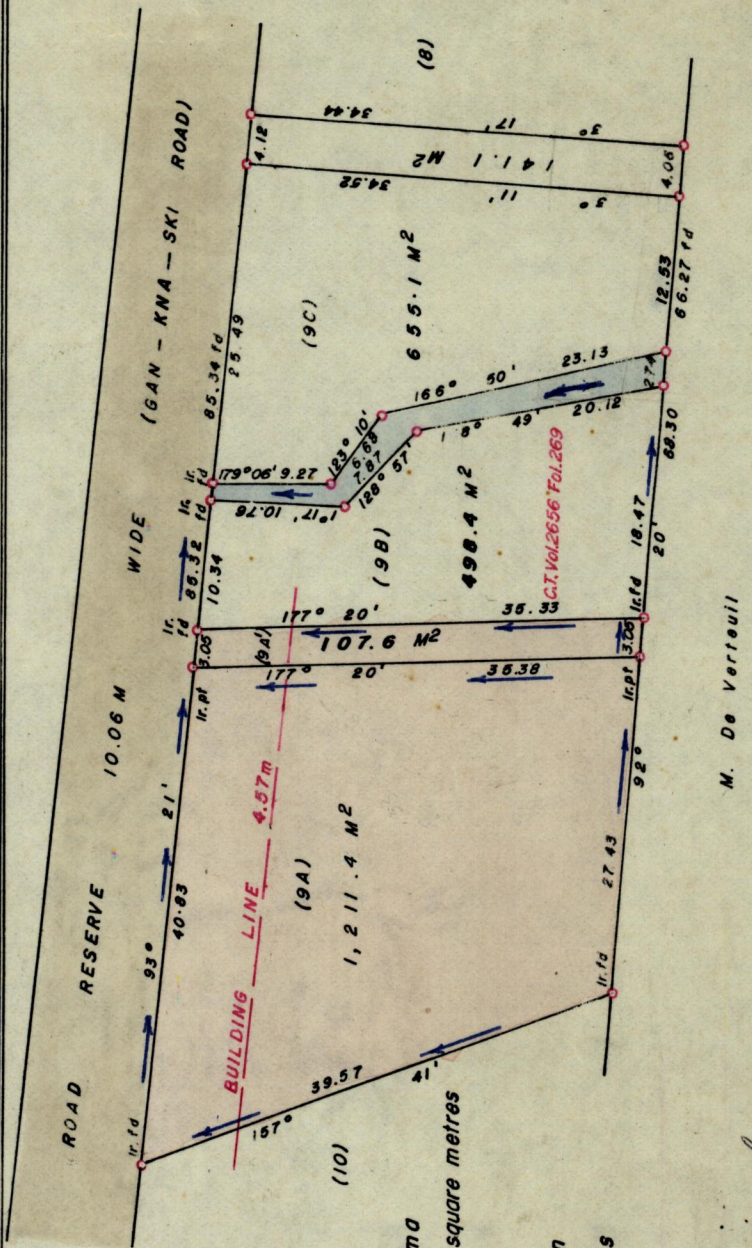
SCALE 1 : 625
 Distances are in metres

PLAN of 2 parcels of land coloured pink in the Ward of Arima Containing together, one thousand three hundred and nineteen point zero square metres Surveyed by me with due authority in January 1983 I certify that I have complied with rule 76 under section 14 (2) (d) of the Land Surveyors Ordinance 1952 and this plan is correct.

Checked by *SR 25/11/86 Hup. Sonawany*
 Entered Land Surveyor Trinidad, 7th March 1983

1155

249



M. De Verreuil