

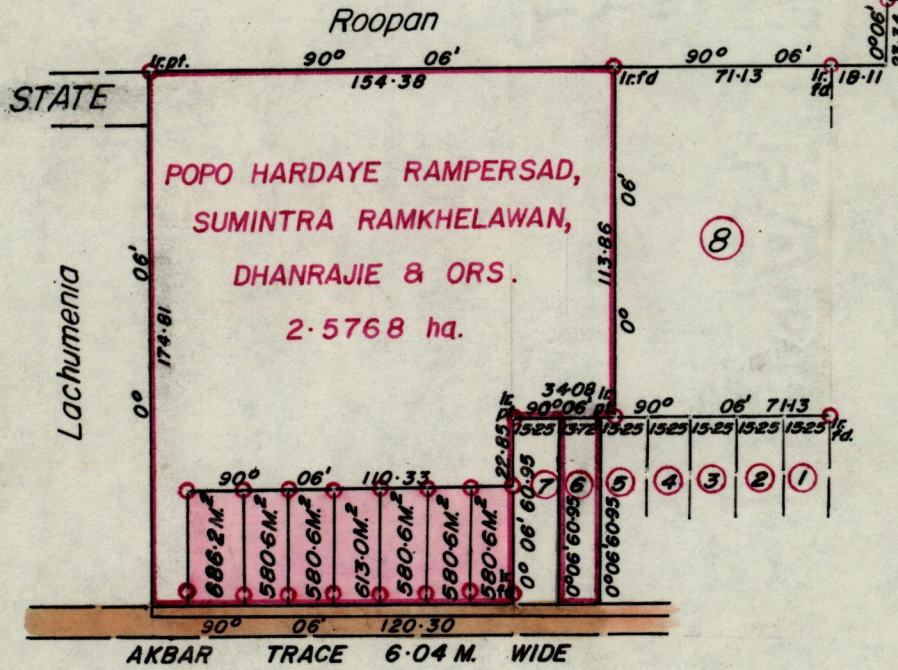
No 7461

REMAINING PORTION PLAN 1921/131

R.P.O. Vol. 36
C.T. Vol. 2847

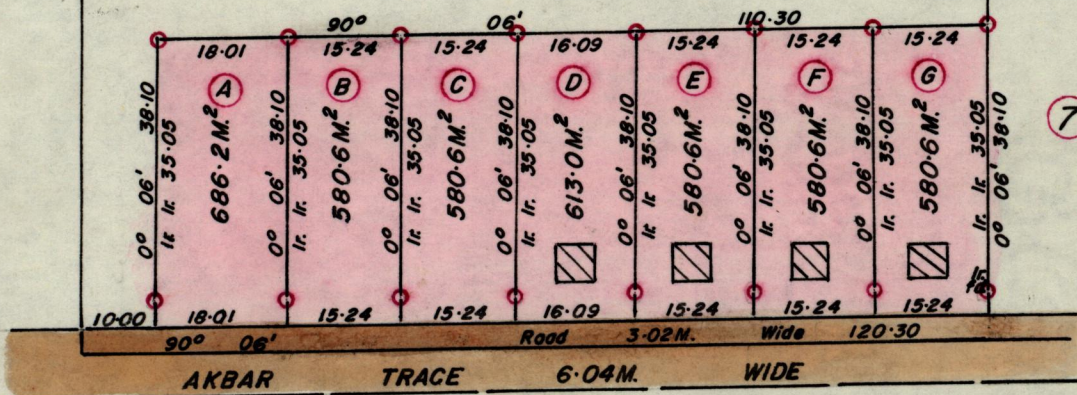
Fol. 395
Fol. 379 F

Ward of Siparia.
County of St. Patrick.
Cadastral Sheet G. 12. B.



INSET

Popo Hardaye Rampersad,
Sumintra Ramkhelawan,
Dhanrajie & Ors.



SCALE 1:1000
Distance are in metres
○ Denotes Iron put except stated

Approved

M. B. Joseph
Director of Surveys
86.11.19

SCALE 1: 2500

Note: To obtain compass bearings add/subtract 6 minutes Distances are in metres
PLAN of 7 Parcelsof land coloured pink in the Ward of Siparia
Containing together four thousand two hundred and two point two metres sq.
Surveyed by me, with due authority, in May 1984

I certify that I have complied with rule 76 under section 14(2)(d) of the
Land Surveyors' Ordinance 1952, and that this plan is correct.

Checked by *J. D.* 86.11.19

G. M. S. Charan

Entered

Land Surveyor, Trinidad 25/7/1984