

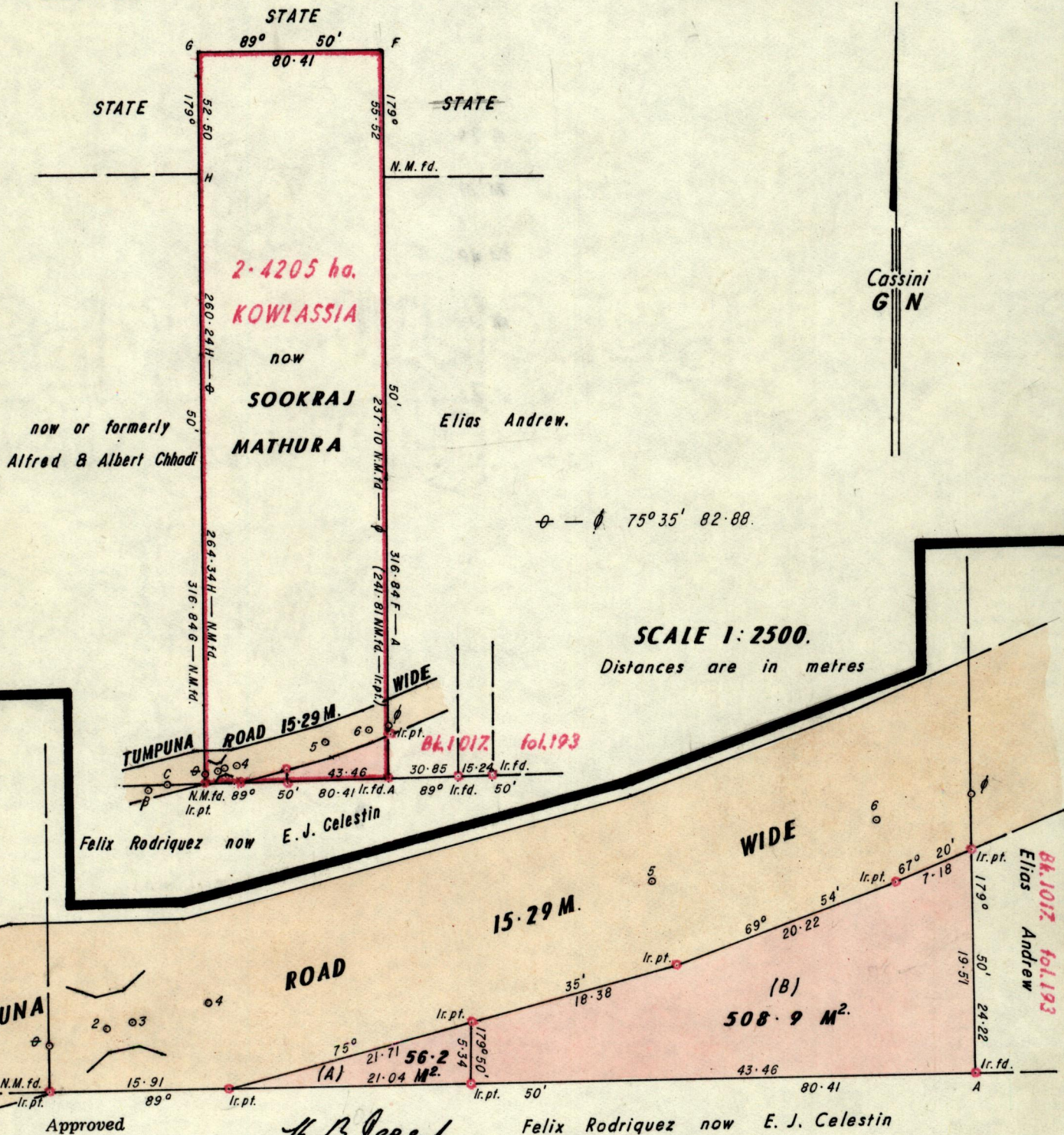
R.P.O. Vol 623.
C.T. Vol.

Fol. III.
Fol.

1155

Ward of Tamana.
County of St. Andrew.
Cadastral Sheet B. 25. P.

213



Approved

K. B. Jeebhoy
Director of Surveys
8.6.11.12

SCALE 1:500.

Note: To obtain compass bearings add/subtract 10 minutes Distances are in metres.

PLAN of 2 Parcels of land coloured pink in the Ward of Tamana.
Containing five hundred and sixty five point one square metres.
Surveyed by me, with due authority, in June 1983.

I certify that I have complied with rule 76 under section 14(2)(d) of the
Land Surveyors' Ordinance 1952, and that this plan is correct.

Checked by *[Signature]* 8.6.10.89 *Winston Ramcharan*

Entered Land Surveyor, Trinidad 6th June 1984

	<u>ϕ</u>	
10.86	82.88	4.40
9.60	74.61	5.60
7.60	54.49	7.60
7.60	14.26	7.60
2.82	7.62	2.21
3.02	5.21	2.01
11.20	<u>ϕ</u>	4.10
	75° 35'	