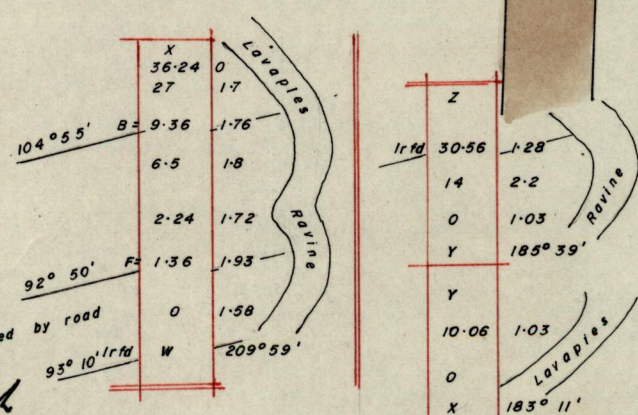
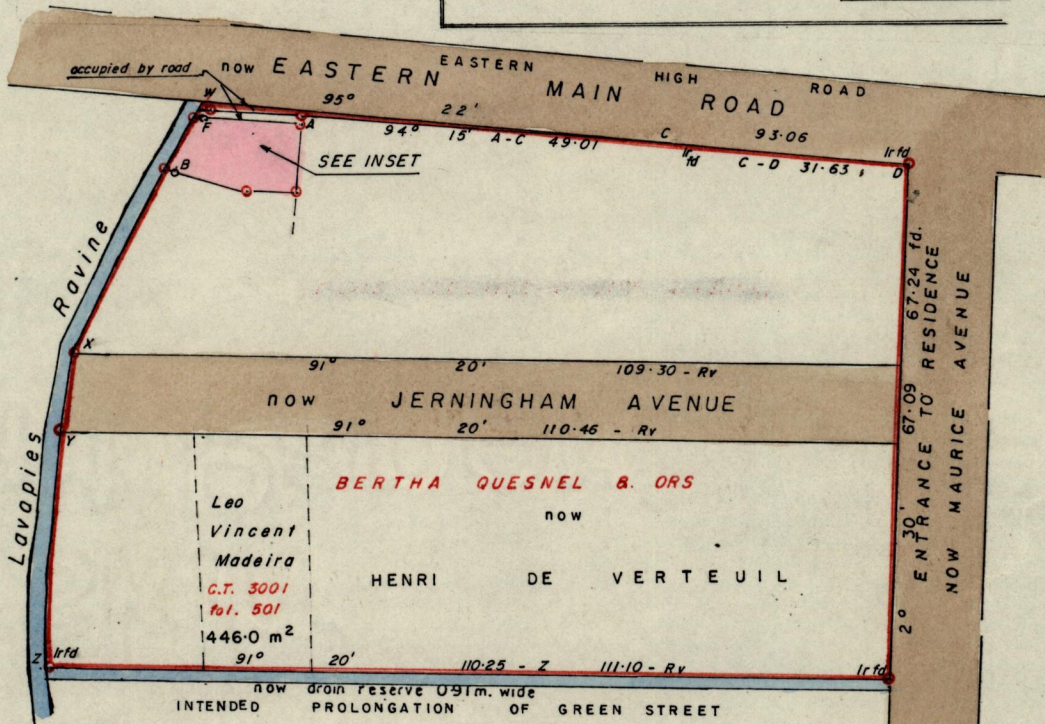
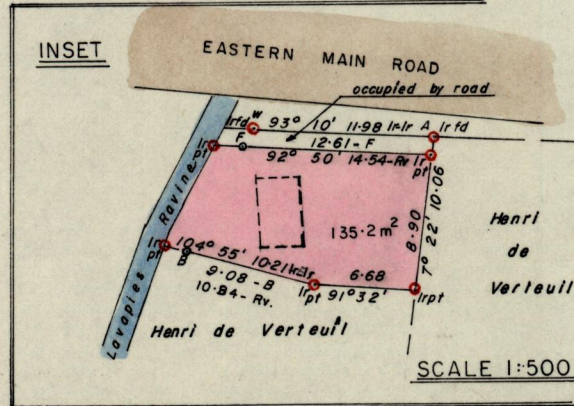


N^o 47416

C.T
R.P.O. Vol. 75
C.T. Vol.

See L&S Plan E.G. 108
Fol. 55
Fol.

Borough
~~Ward~~ of Arima
County of St. George
Cadastral Sheet B. 19. P. 24 C
1/b



Approved

K.B. Jones
Director of Surveys
86.11.07

SCALE : 1 / 1000

Note: To obtain compass bearings add/subtract 10 minutes Distances are in metres
PLAN of a Parcel of land coloured pink in the ~~Ward~~ of Arima
Containing one hundred and thirty-five point two square metres
Surveyed by me, with due authority, in January 1972

I certify that I have complied with rule 76 under Section 14 (2) (d) of the Land Surveyors' Ordinance 1952, and that this plan is correct.

Checked by *AB 86.11.7*

Davis H. Smith
Land Surveyor, Trinidad 14th Nov. 1972