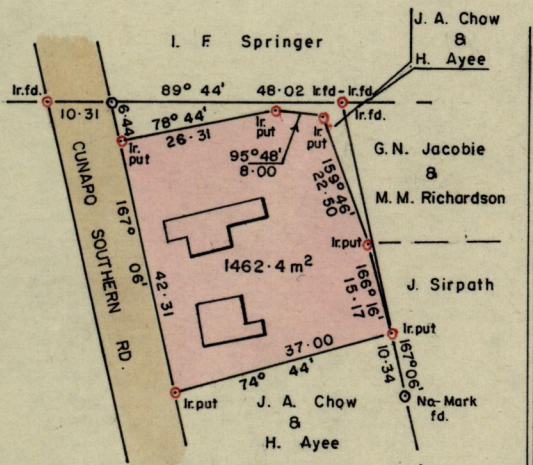


No 48023

R.P.O. Vol. 38  
C.T. Vol. 936

Fol. 423  
Fol. 319

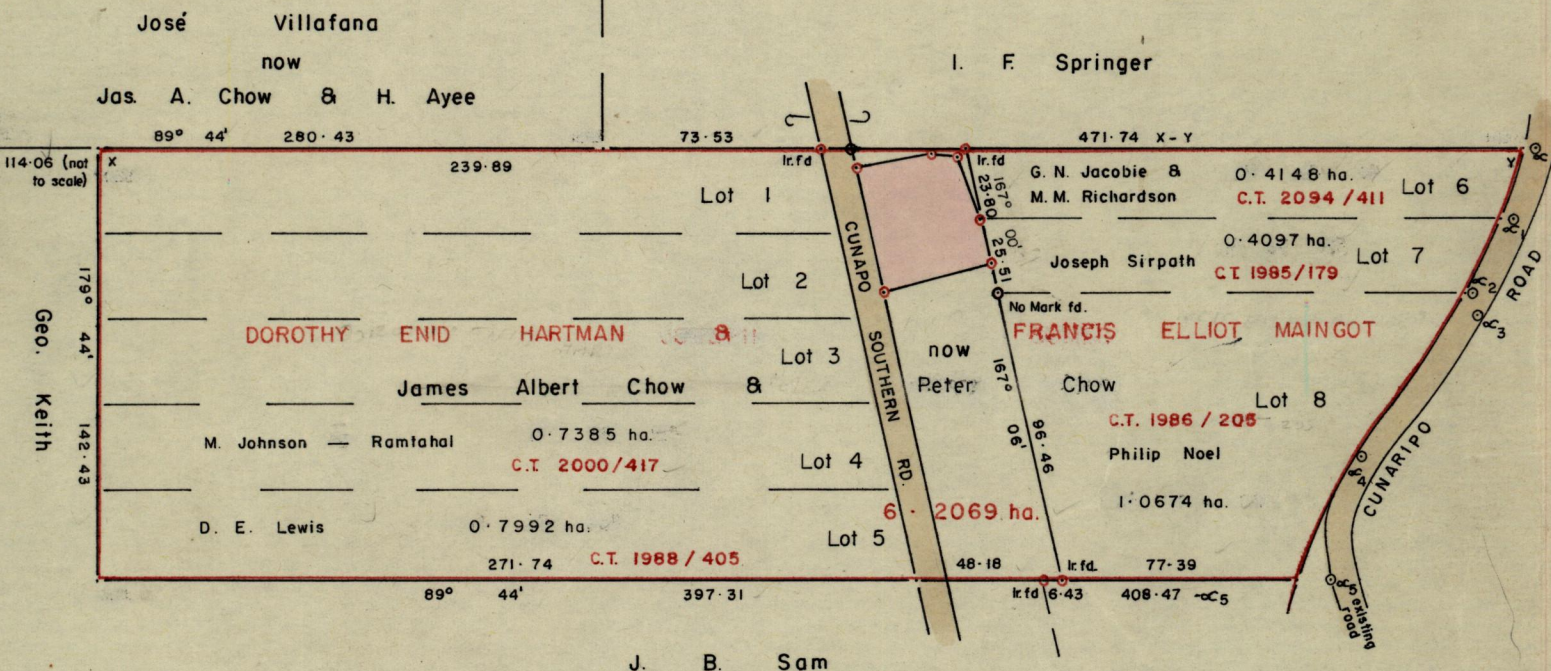
Ward of Turure  
County of St. Andrew  
Cadastral Sheet E. 2. A. & E. 25. F



Sta.	Bear.	Dist.
1 - 2	197° 47'	24.70
2 - 3	206° 34'	28.06
3 - 4	273° 02'	3.24
4 - 5	163° 25'	7.04
5 - 6	219° 26'	60.39
6 - 7	194° 03'	42.06

SCALE 1 / 1250  
Distances are in metres.

GN



Bearings are based on Marks found.

Approved

*H. B. Cochrane*  
 Director of Surveys  
 86.10.03

SCALE 1 / 2500

Note: To obtain compass bearings add/subtract 16 minutes Distances are in metres

PLAN of a Parcel of land coloured pink in the Ward of Turure  
 Containing fourteen hundred and sixty two point four square metres  
 Surveyed by me, with due authority, in October 1985.

I certify that I have complied with rule 76 under Section 14 (2) (d) of the Land Surveyors' Ordinance 1952, and that this plan is correct.

Checked by *[Signature]* 3/10/85

Entered.....

Land Surveyor, Trinidad

*J. R. Gardine*  
 25/10/1985