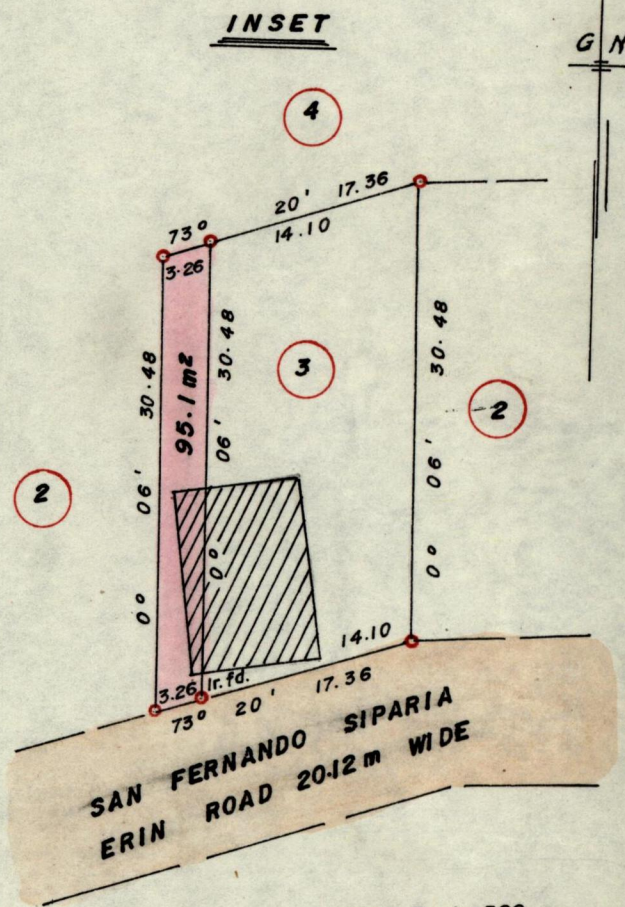
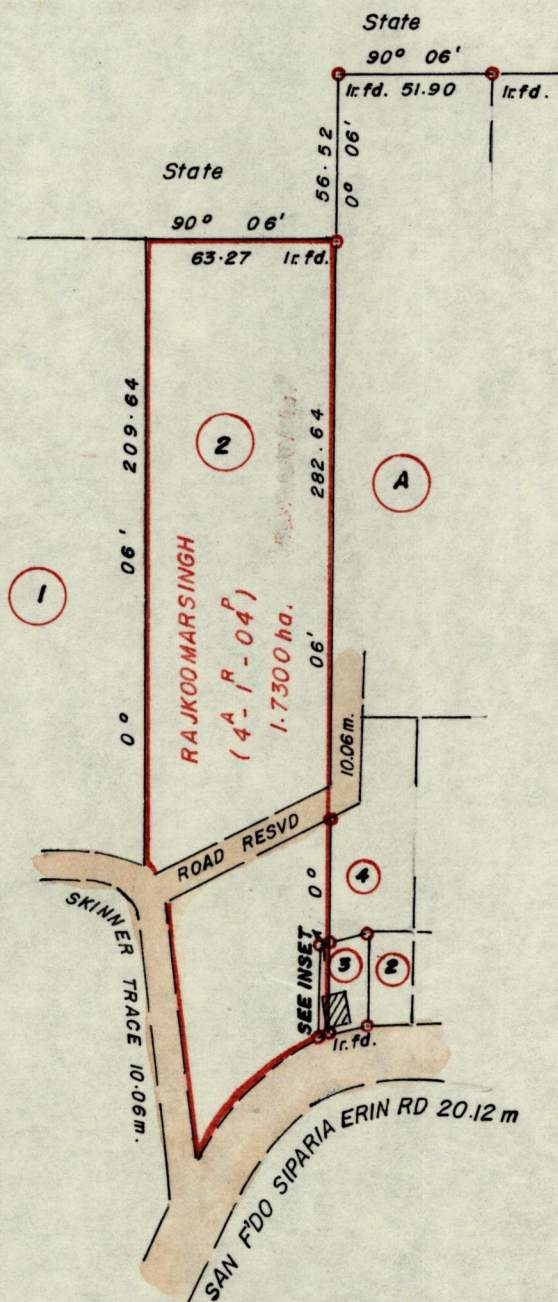


No 9290

R.P.O. Vol. 140
C.T. Vol. 2197

Fol. 249
Fol. 397

Ward of Siparia
County of St Patrick
Cadastral Sheet G. 16. H



Approved

K.B. Louh
Director of Surveys
86.5.02

Denotes Iron put, except otherwise stated.

Bearings are grid from Solar Obs.

SCALE 1:2500

Note: To obtain compass bearings ~~add~~/subtract 6

minutes

Distances are in metres

PLAN of a Parcel of land coloured pink in the Ward of Siparia

Containing ninety five point one sq. metres

Surveyed by me, with due authority, in September 1984

I certify that I have complied with rule 76 under section 14(2)(d) of the Land Surveyors' Ordinance 1952, and that this plan is correct.

Checked by *D. 86.5.2*

Entered *H. Louh* Land Surveyor, Trinidad *10 May 1985*