

No 12330

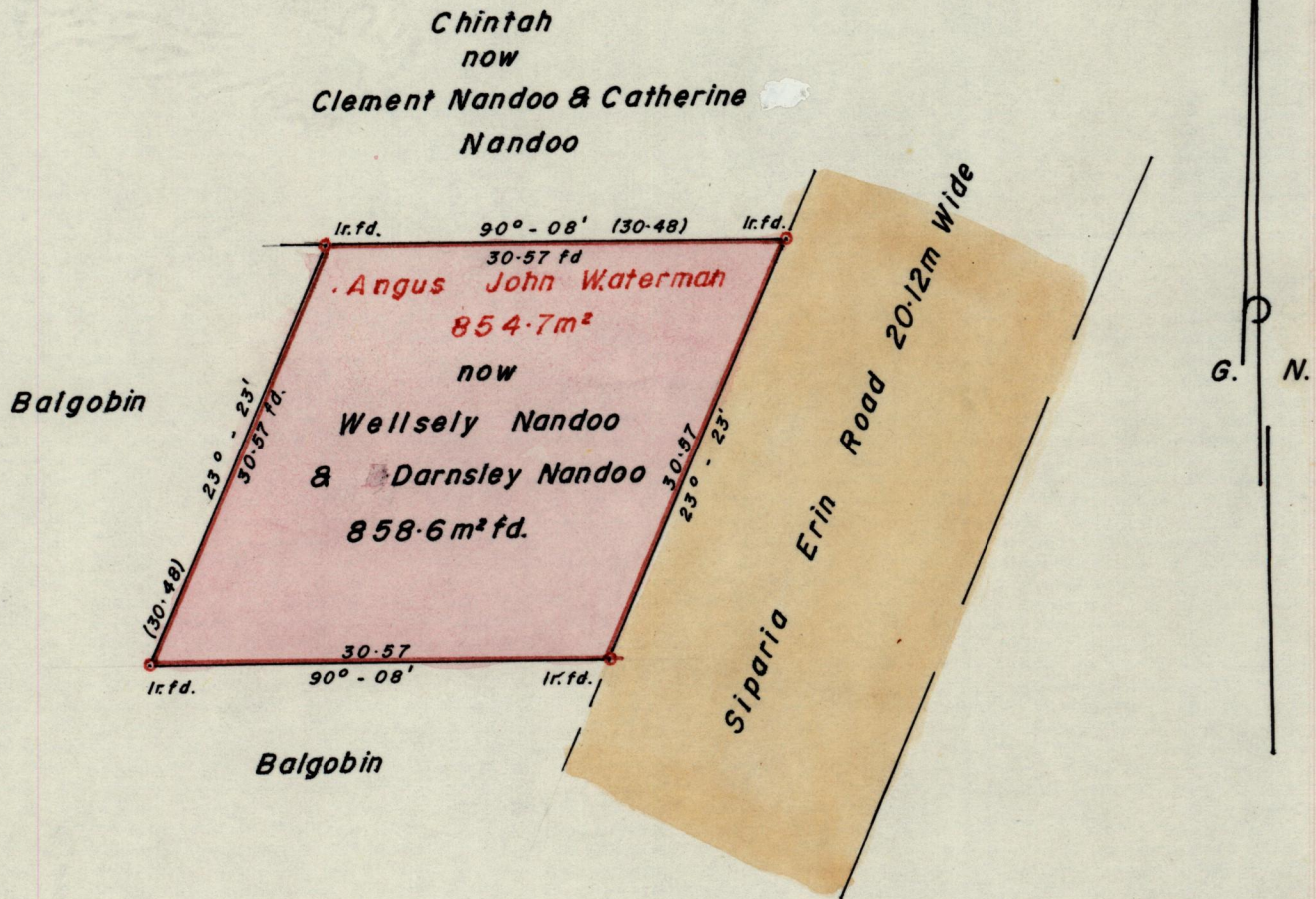
1155

151

R.P.O. Vol. 148
C.T. Vol. 1698

Fol. 603
Fol. 253

Ward of Siparia
County of St. Patrick
Cadastral Sheet 6.17.A.



Approved

H.B. Joubert
Director of Surveys
82.9.15

SCALE 1/500

Note: To obtain compass bearings add/subtract

minutes

Distances are in Metres

PLAN of a Parcel of land coloured **Pink** in the Ward of Siparia
Containing **Eight hundred and fifty eight point six** sq. metres.
Surveyed by me, with due authority, in **June 1982**.

I certify that I have complied with rule 76 under section 14(2)(d) of the
Land Surveyors' Ordinance 1952, and that this plan is correct.

Checked by *H.B. Joubert* 86/09/12

[Signature]
Land Surveyor, Trinidad 25 Nov 1982

Entered

19..82