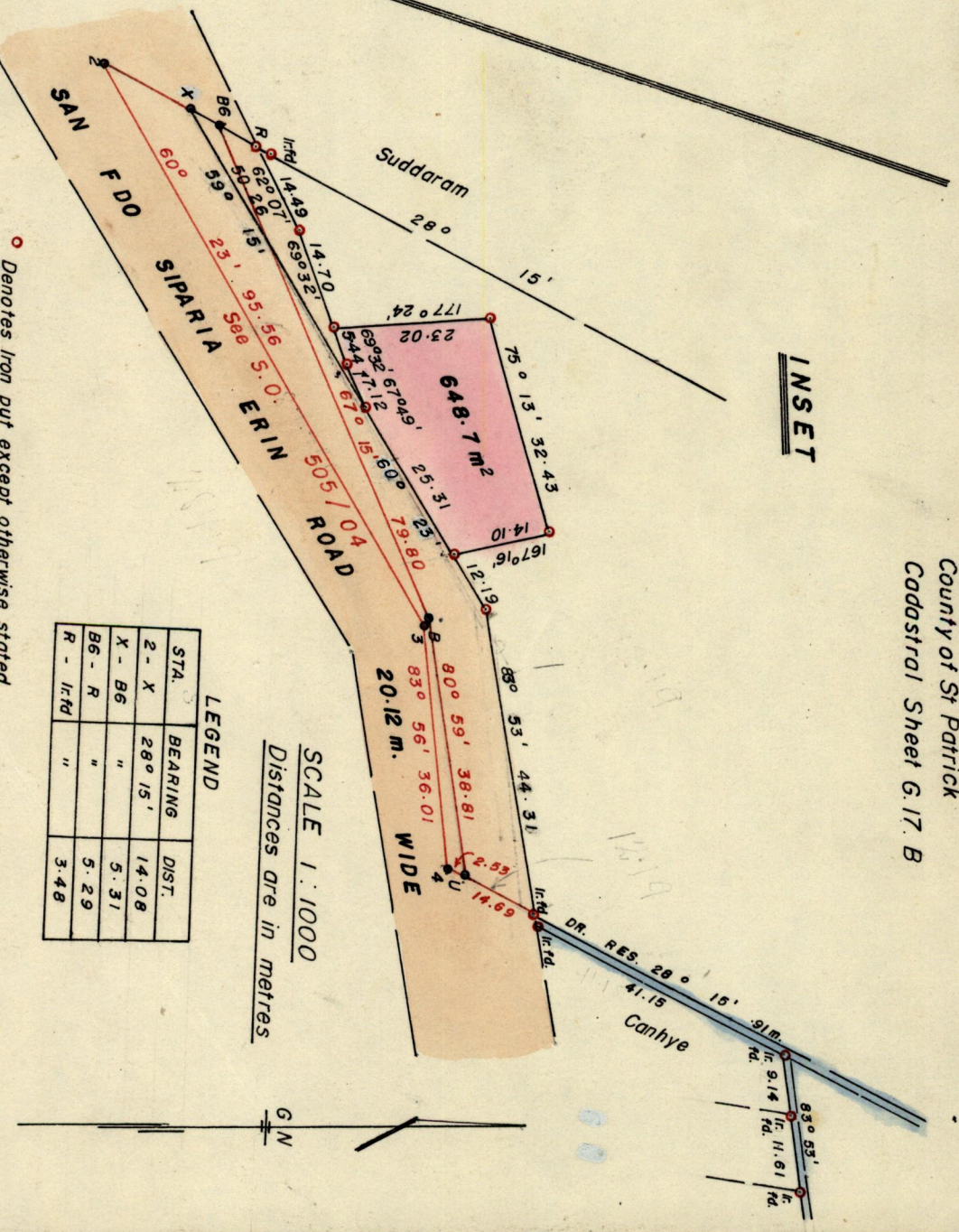
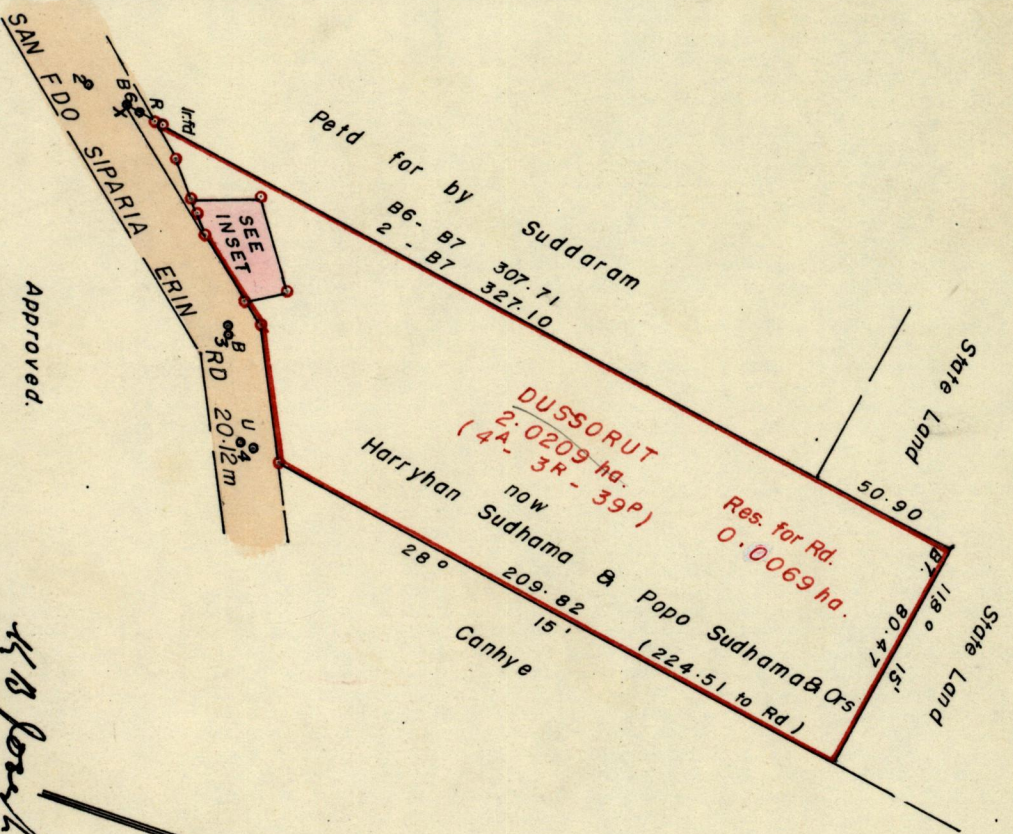


R.P.O. Vol. 125
 C.T. Vol.
 Fol. 643

Ward of Siparia
 County of St Patrick
 Cadastral Sheet G.17. B



LEGEND

STA.	BEARING	DIST.
2 - X	28° 15'	14.08
X - B6	"	5.31
B6 - R	"	5.29
R - Irtd	"	3.48

Denotes Iron put except otherwise stated

SCALE 1:2500

SCALE 1:1000
 Distances are in metres

Approved.

Director of Surveys 88.5.02

Note To obtain compass bearings ~~add~~ / subtract 5 minutes. Distances are in

PLAN of a Parcel of land coloured pink in the Ward of Siparia

Containing six hundred and forty eight point seven sq. metres

Surveyed by me, with due authority, in March 1985

I certify that I have complied with rule 76 under section 14 (2) (d) of the

Land Surveys Ordinance 1952, and that this plan is correct

Checked by *W.S.S.*

Entered *W.S.S.*

Land Surveyor, Trinidad 25th Nov 1985

470

P.T.O