

No 7269

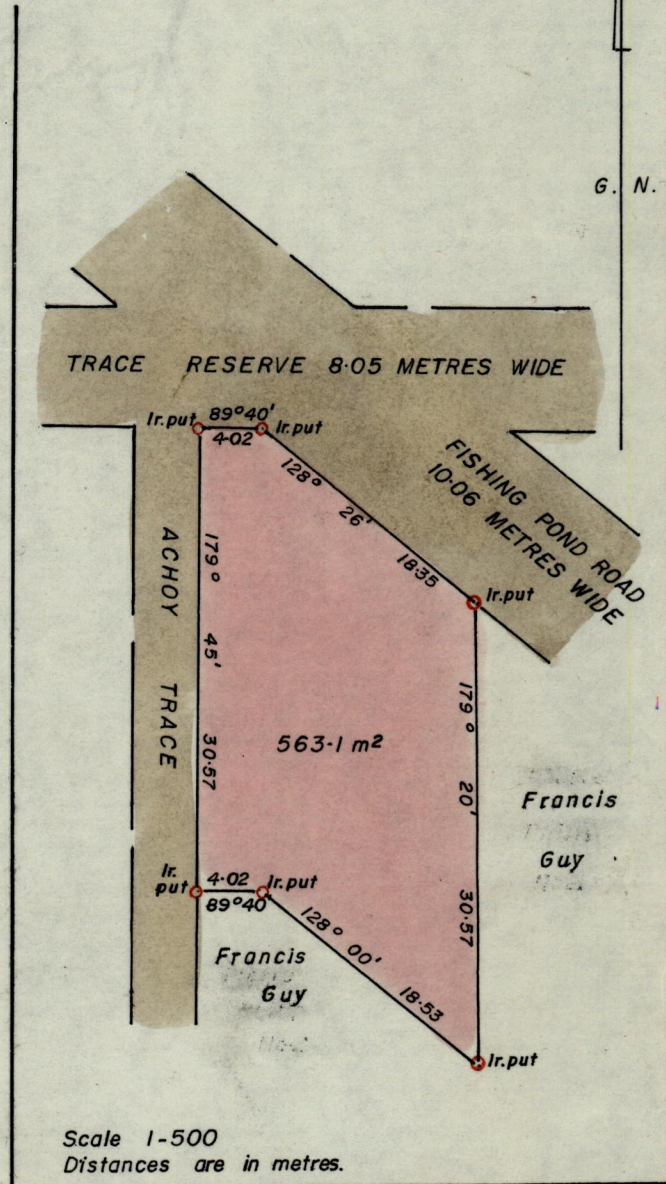
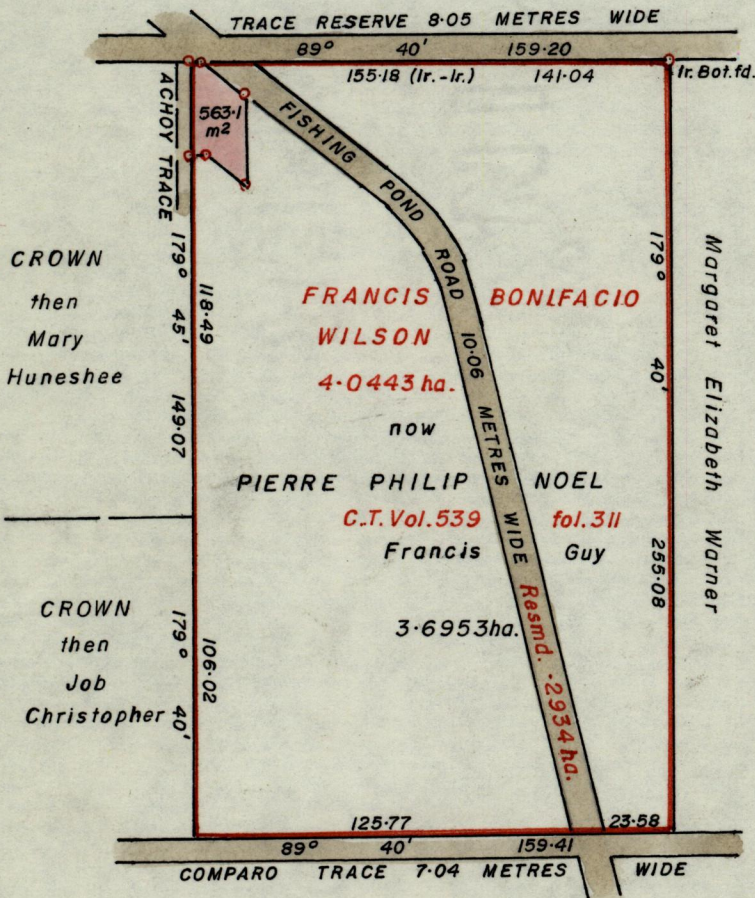
1155

136

R.P.O. Vol. 107
C.T. Vol. 539

Fol. 535
Fol. 311

Ward of Manzanilla
County of St. Andrew
Cadastral Sheet E.3.G.



Approved

M.B. Joseph
Director of Surveys
86.9.03

Bearings are grid based on Solar observations.
Note: To obtain compass bearings add/~~subtract~~ 20

SCALE 1 - 2500

minutes

Distances are in metres

PLAN of a Parcel of land coloured pink in the Ward of Manzanilla
Containing Five hundred and sixty-three point one square metres.

Surveyed by me, with due authority, in April 1982

I certify that I have complied with rule 76 under section 14(2)(d) of the
Land Surveyors' Ordinance 1952, and that this plan is correct.

Checked by *86.9.3*

Shp Soma
Land Surveyor, Trinidad 7th November 1985

Entered