

Nº 47912

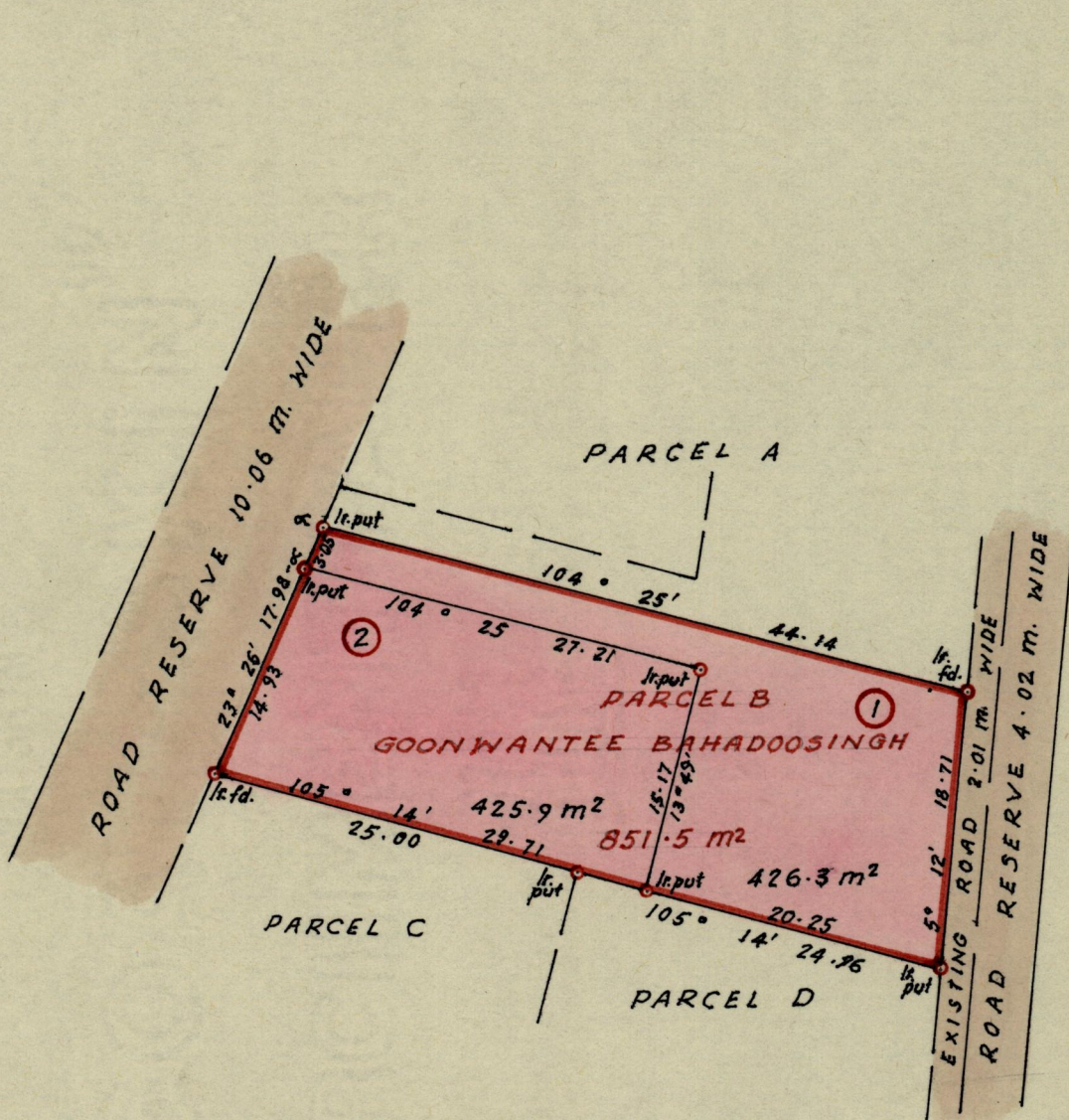
1155

130
130()

C.T. Vol. 1004
C.T. Vol. 1848

Fol. 255
Fol. 507

City
~~Ward~~ of Port of Spain
County of St. George
Cadastral Sheet A.19.D.



Approved

H. B. Shank

Director of Surveys 86-8-29

Bearings are based on Solar Observations. SCALE : 1/500

Note: ~~To obtain compass bearings add/subtract~~ minutes Distances are in metres

PLAN of 2 Parcels of land coloured pink in the ~~Ward~~ City of Port of Spain
~~Containing~~

Surveyed by me, with due authority, in September 1985.

I certify that I have complied with rule 76 under Section 14 (2) (d) of the Land Surveyors' Ordinance 1952, and that this plan is correct.

Checked by *H. B. Shank* 86/08/29

Leslie B. Shank

Entered.....

Land Surveyor, Trinidad 10th October 1985