

1155

(B)

110

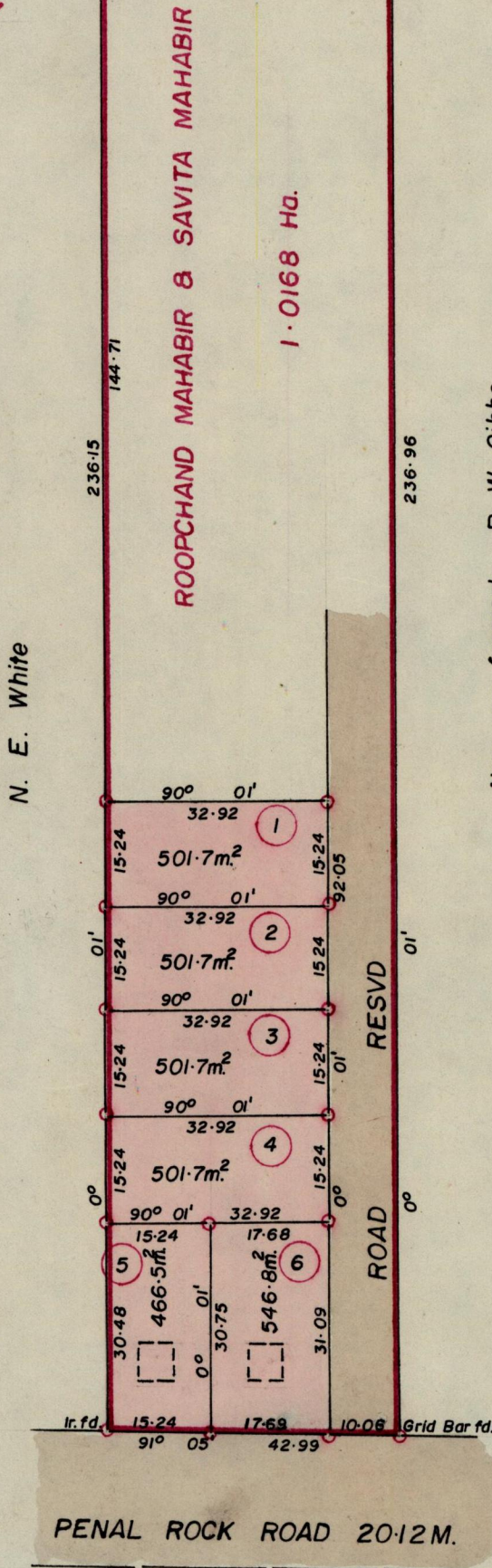
R.P.O. Vol. 130 Fol. 635

C.T. Vol. 2418 Fol. 437

Ward of Siparia

County of St Patrick

Cadastral Sheet G.18.C.



Approved

K.B. Lock

Director of Surveys

86.8.12

SCALE 1:1000

○ Denotes Iron put except stated.

Distances are in metres.

Note: To obtain compass bearings subtract 1 minute

PLAN of six Parcels of land coloured pink in the Ward of Siparia.

Containing together three thousand and twenty point one sq. metres.

Surveyed by me, with due authority, in October & November 1984.

I certify that I have complied with rule 76 under Section 14 (2)(d) of the Land Surveyors' Ordinance 1952, and that this plan is correct.

Checked by *86.8.12*

Entered

S. Atcharam
Land Surveyor, Trinidad

15/11/1984