

REMAINING PORTION

R.P.O. Vol. 6

Fol. 361

1145

Cadastral Sheet D.15.B.  $\frac{35D}{3/a}$

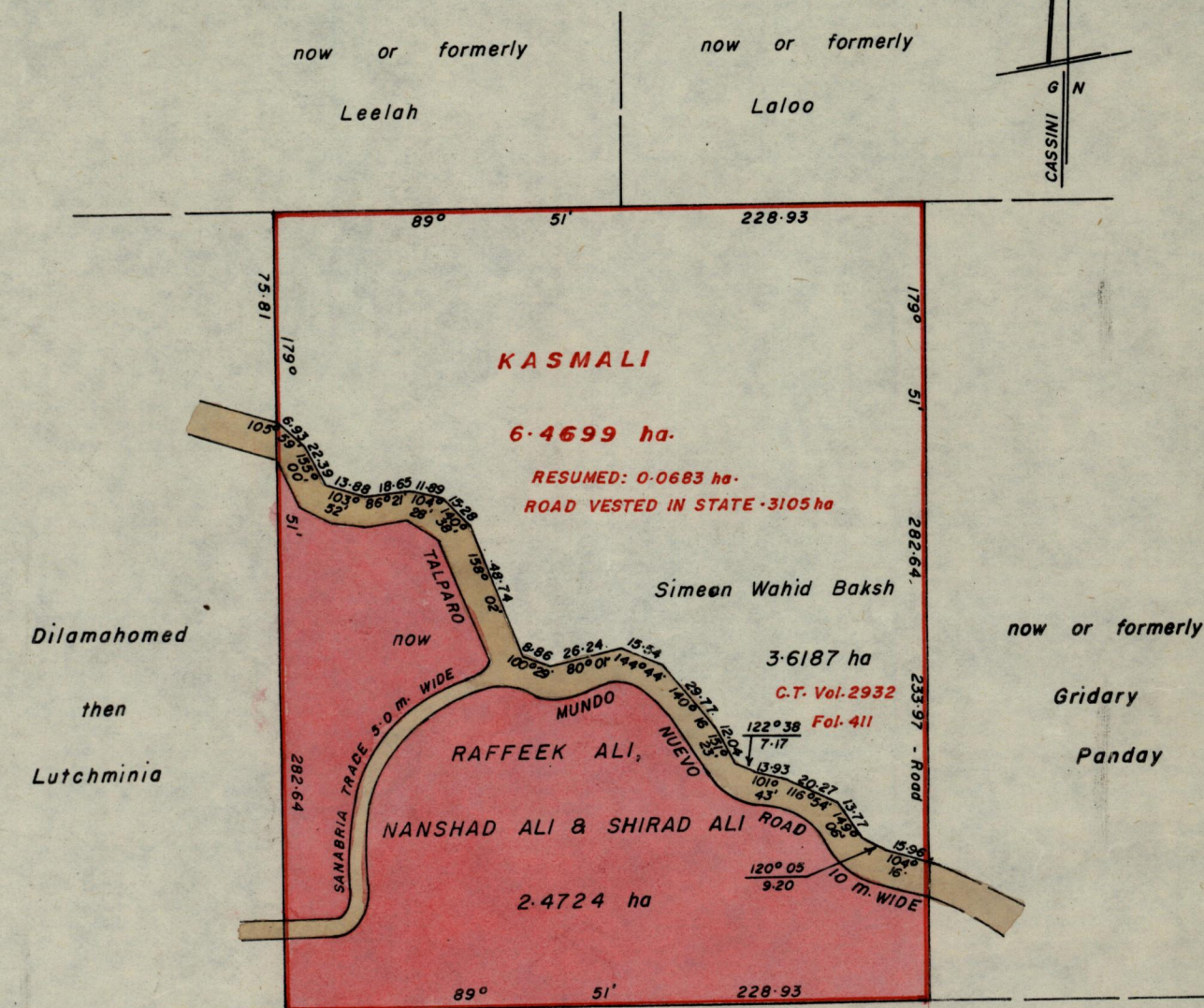
C. of T. Vol. 932

Vol. 435

Ward of San Rafael

County of St. George

89



Anthony Fabien

then

George Houllier

Approved

*KB Joseph*  
Director of Surveys  
86.8.22

SCALE— 1/2500

Note: To obtain compass bearings add 9 minutes subtract

Distances are in metres

This is a true copy of a diagram of six point four six nine nine hectares originally transferred granted to KASMALI, shewing a portion coloured pink and containing two point four seven two four hectares being the remainder after one Vesting, one Resumption and one previous transfer of other portions of the land. the dividing lines having been run in conformity with Rule 76 under Sec. 7(d) of Cap. 27. No. 2 and duly certified by the Director of Surveys.

Checked by *JB* 86.8.22

Entered on

*Justo Agui*  
Land Surveyor, Trinidad, ..... 19.86