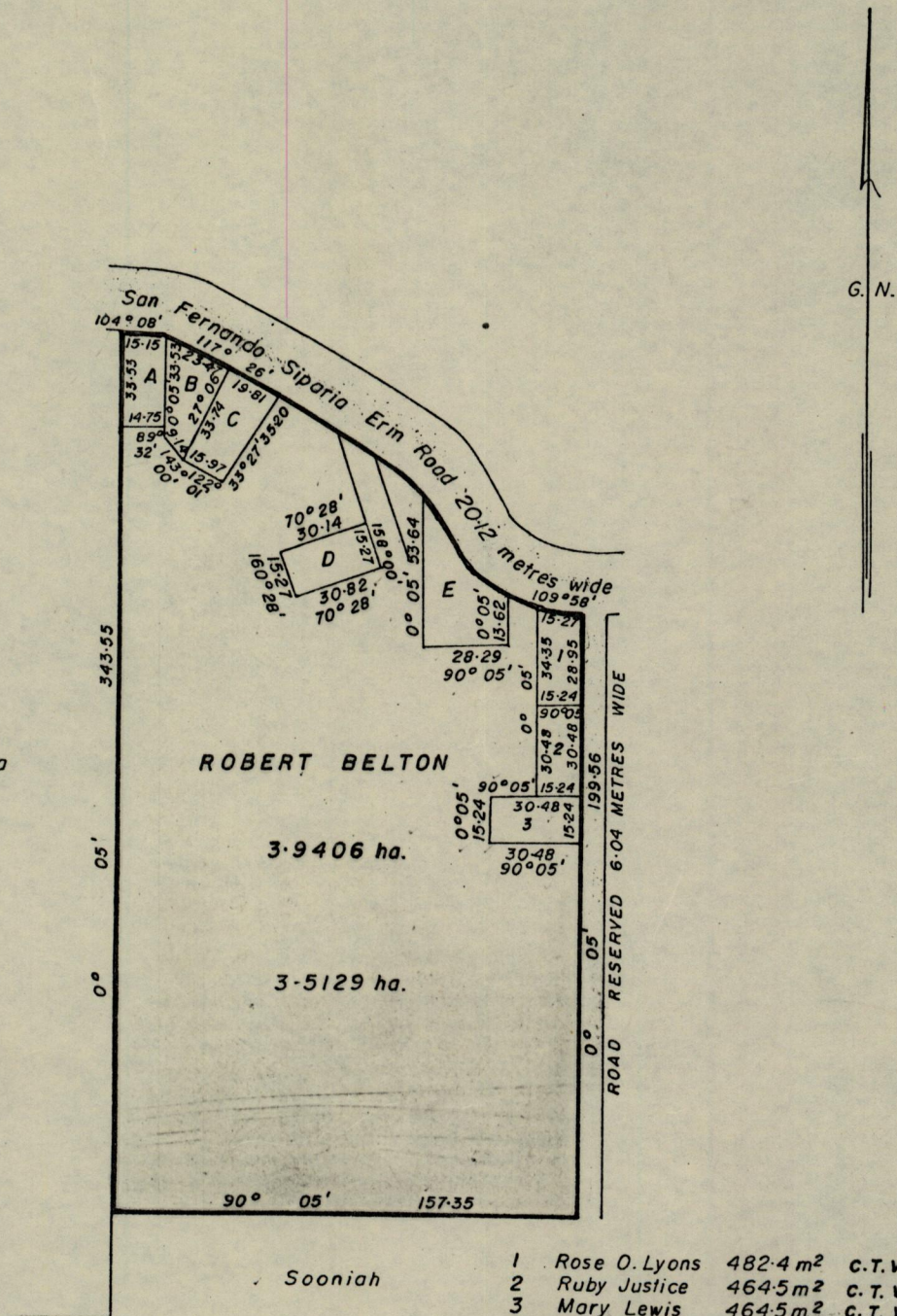


R.P.O. Vol. 562 Fol. 567
C. of T. Vol. Vol.

Cadastral Sheet G.17.E. 68E 84
Ward of Siparia
County of St. Patrick

1145
66.3.20



Approved

.....
Director of Surveys

Note: To obtain compass bearings ^{add} 5 _{subtract} minutes

- 1 Rose O. Lyons 482.4 m² C.T. Vol. 2185 Fol. 437.
- 2 Ruby Justice 464.5 m² C.T. Vol. 2185 Fol. 443.
- 3 Mary Lewis 464.5 m² C.T. Vol. 2185 Fol. 449.
- A Hollis Reece 464.5 m² C.T. Vol. 2185 Fol. 453.
- B Muriel Belton 488.3 m² C.T. Vol. 2185 Fol. 461.
- C Kenny Maloney 614.6 m² C.T. Vol. 2235 Fol. 529.
- D Eileen Keppel 465.4 m² C.T. Vol. 1541 Fol. 63.
- E L. & B. Da Breau 833.2 m² C.T. Vol. 1541 Fol. 55.

SCALE 1 - 2500

Distances are in metres.

This is a true copy of a diagram of Three point nine four zero six hectares originally granted to ROBERT BELFON, shewing a portion coloured pink and containing Three point five one two nine hectares being the remainder after eight previous transfers of other portions of the land. the dividing lines having been run in conformity with Rule 76 under Sec. 7(d) of Cap. 27. No. 2 and duly certified by the Director of Surveys.

Checked by *70 86.7.22*

Entered on

C. J. J. Jones
Land Surveyor, Trinidad, 24 March 1986