

1145

L. & S.—54

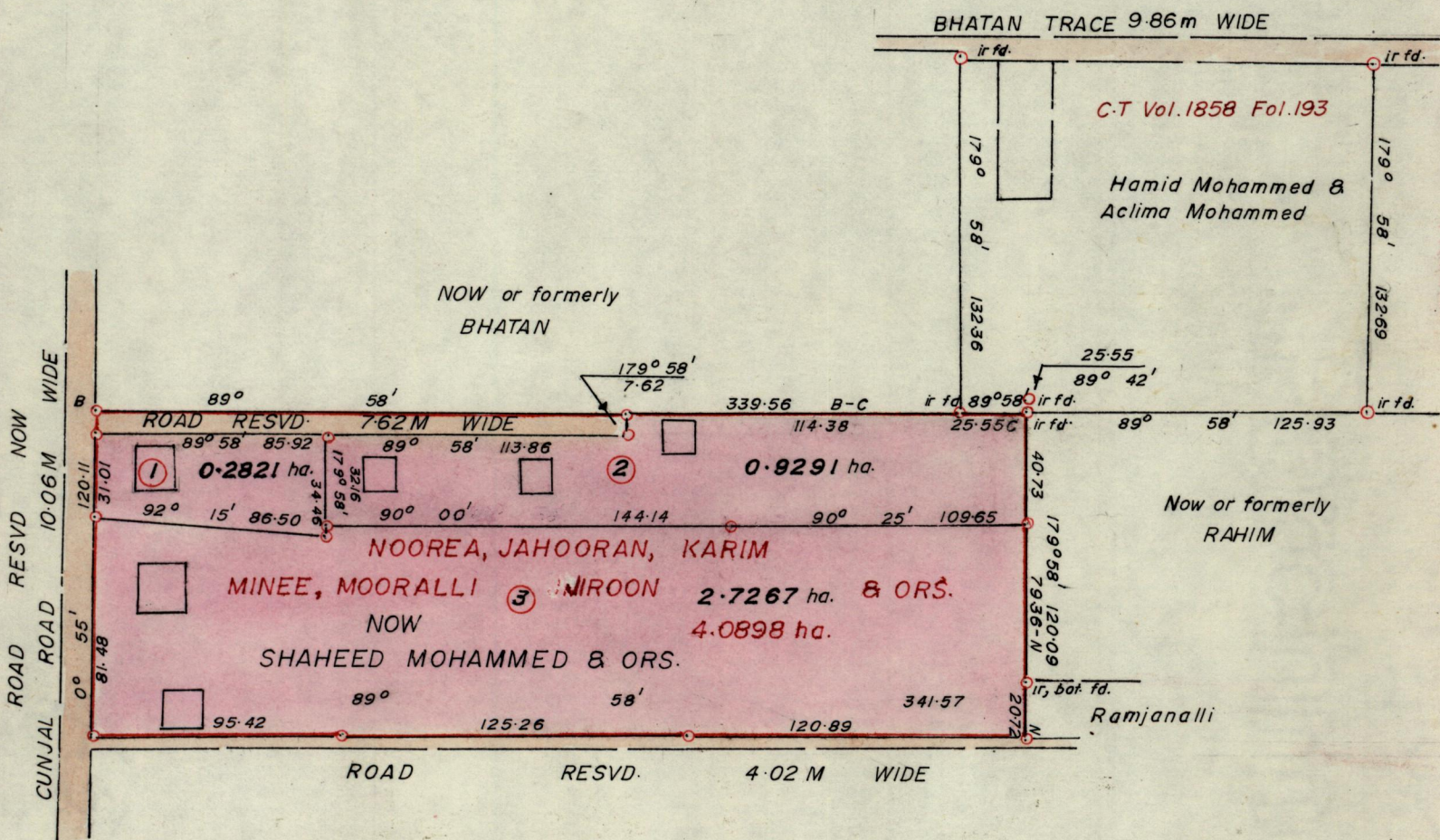
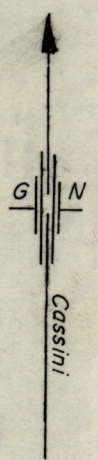
No 27043

R.P.O. Vol. 61  
C.T. Vol. 1645

Fol. 421  
Fol. 243

Ward of Savana Grande  
County of Victoria  
Cadastral Sheet G9 P 64B / 37c

Vol. 431 Fol. 13



Approved *[Signature]*  
Director of Surveys  
90 01 20

SCALE 1-2500  
Distances are in METRES

○ Denotes ir put except stated otherwise  
Note: To obtain compass bearings add/subtract 2 minutes

PLAN of a Parcel of land coloured PINK in the Ward of Savana Grande  
Containing Three point nine three seven nine hectares  
Surveyed by me, with due authority, in November 1996  
I certify that I have complied with rule 76 under section 14(2)(d) of the  
Land Surveyors' Ordinance 1952, and that this plan is correct.

Checked by *[Signature]* ..... *[Signature]* .....  
Entered ..... Land Surveyor, Trinidad 30<sup>th</sup> December 1996  
and Tobago