

REMAINING PORTION

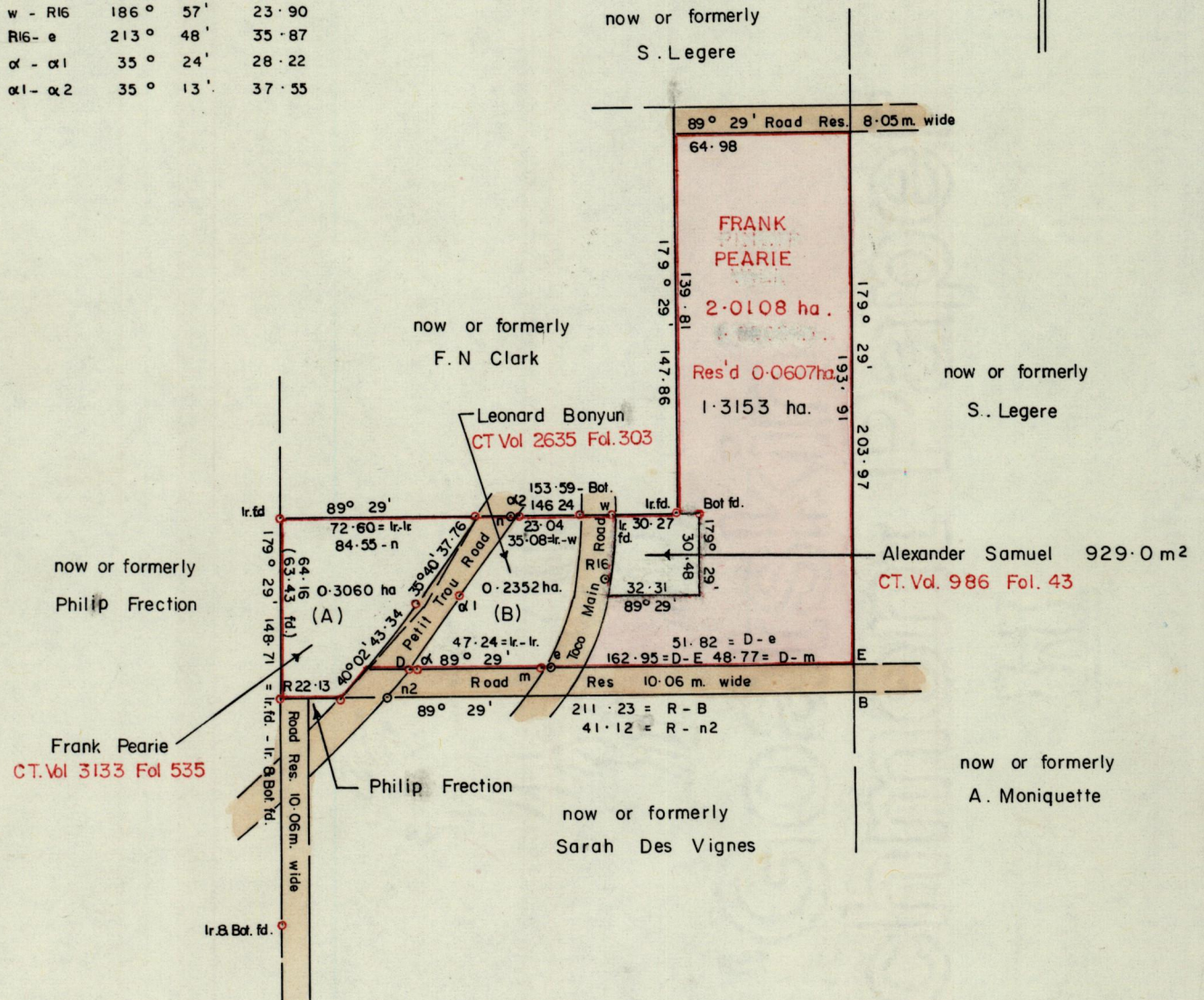
R.P.O. Vol. 94 Fol. 233  
C. of T. Vol. 2371 Vol. 81

Cadastral Sheet 7 A / 1/c (C. 5. E)  
Ward of Toco  
County of St. David

|         |          |       |
|---------|----------|-------|
| n - n2  | 213° 53' | 76.87 |
| n - D   | 213° 53' | 64.65 |
| w - R16 | 186° 57' | 23.90 |
| R16 - e | 213° 48' | 35.87 |
| α - α1  | 35° 24'  | 28.22 |
| α1 - α2 | 35° 13'  | 37.55 |

See Bk. 897 Fol. 114  
Bk. 818 Fol. 31

G N (Cassini)



Approved

*[Signature]*  
Director of Surveys  
97.12.19

SCALE 1 : 2500

Note: To obtain compass bearings add 31 minutes subtract

Distances are in METRES

This is a true copy of a diagram of one point eight five six five hectares originally granted to FRANK PEARIE, shewing a portion coloured pink and containing one point three one five three hectares being the remainder after two previous transfer of another portion of the land. the dividing lines having been run in conformity with Rule 76 under Sec. 14(2)(d) of the Land Surveyors Ordinance 1952 and duly certified by the Director of Surveys.

Checked by *[Signature]* 97-12-05

Entered on

*[Signature]*  
Land Surveyor, Trinidad, Jan 22 1997