

1145

L. & S.—54

759

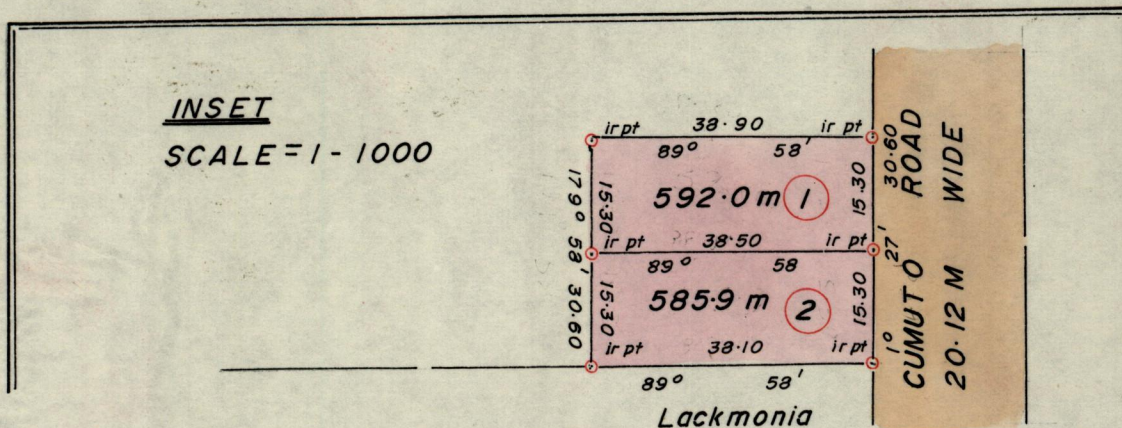
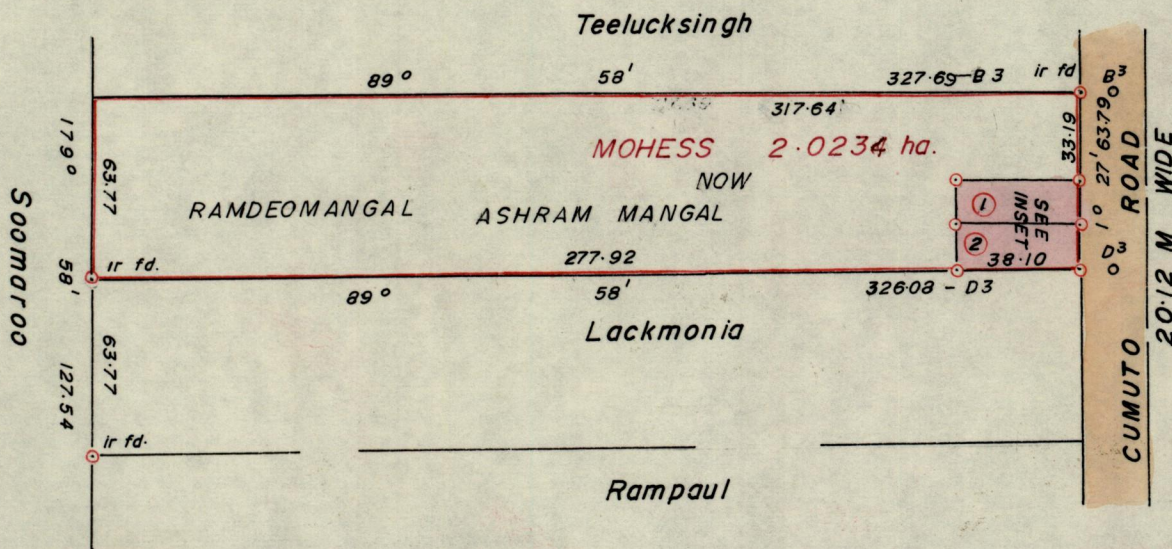
N<sup>o</sup> 454

R.P.O. Vol. 427  
C.T. Vol.

Fol. 337  
Fol.

Ward of Savana Grande  
County of Victoria  
Cadastral Sheet G14D <sup>64E</sup>/<sub>1/a</sub>

G N



Approved *[Signature]*  
 Director of Surveys  
 17.11.24

SCALE 1-2500

Note: To obtain compass bearings add/~~subtract~~ 2 minutes Distances are in Metres

PLAN of 2 Parcels of land coloured Pink in the Ward of Savana Grande  
Containing One thousand one hundred and seventy seven point nine square metres  
Surveyed by me, with due authority, in April 1996

I certify that I have complied with rule 76 under section 14(2)(d) of the  
Land Surveyors' Ordinance 1952, and that this plan is correct.

Checked by *[Signature]*

Entered ..... Land Surveyor, Trinidad ..... 19.96.  
and Tobago