

REMAINING PORTION

R.P.O. Vol. 129

Fol. 535.

1145

Cadastral Sheet G.17. A.

73A  
2/c

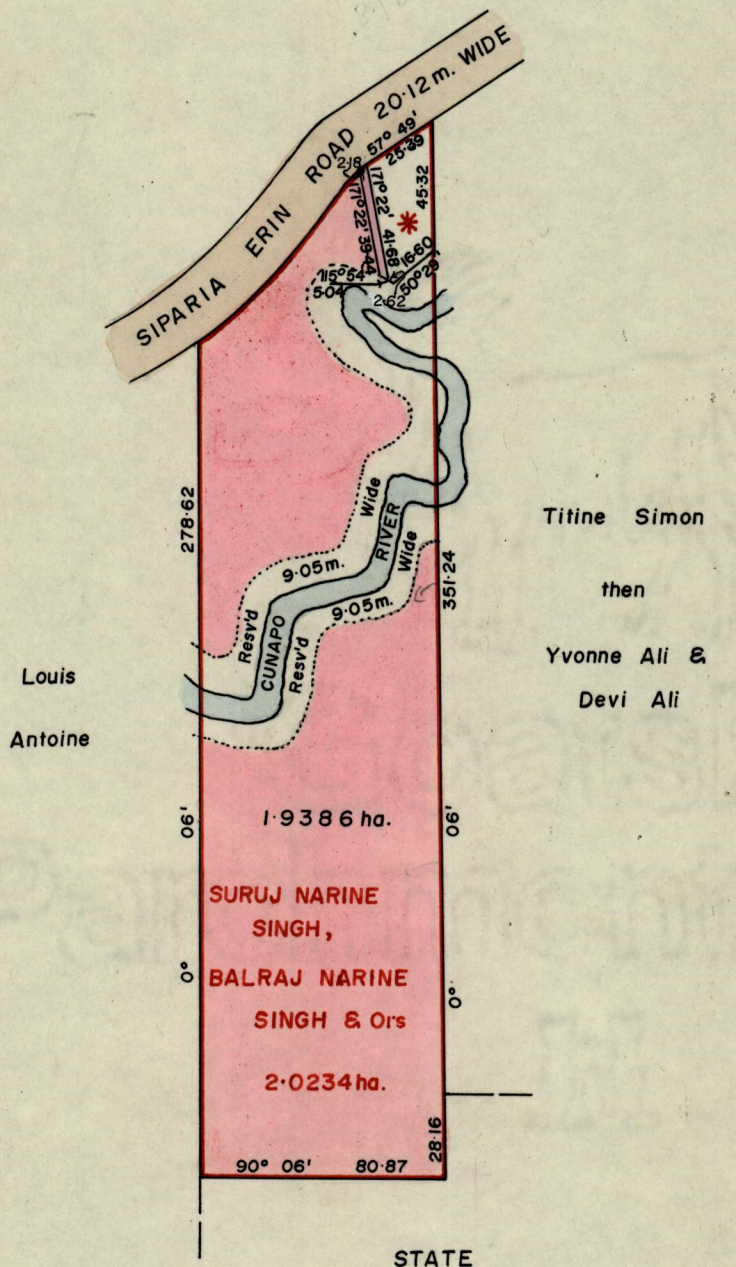
752

C. of T. Vol. 3678

Vol. 331

Ward of Siparia

County of St. Patrick



SEE BK.1227 fol. 83

Andrew D. Boodhai & Ors 848.3m<sup>2</sup>  
\* C.T. Vol. 3734 fol. 129

Approved

*[Signature]*  
Director of Surveys  
97.10.23

SCALE 1:2500

Note: To obtain compass bearings subtract 6 minutes

Distances are in metres

This is a true copy of a diagram of two point zero two three four hectares originally transferred granted to BALRAJ NARINE SINGH & ORS., shewing a portion coloured pink and containing one point nine three eight six hectares being the remainder after one previous transfer of another portion of the land. the dividing lines having been run in conformity with Rule 76 under Sec. 7(d) of Cap. 27. No. 2 and duly certified by the Director of Surveys.

Checked by *[Signature]*

Entered on

*[Signature]*

Land Surveyor, Trinidad, 14<sup>th</sup> March 19.97