

1145

L. & S.-54

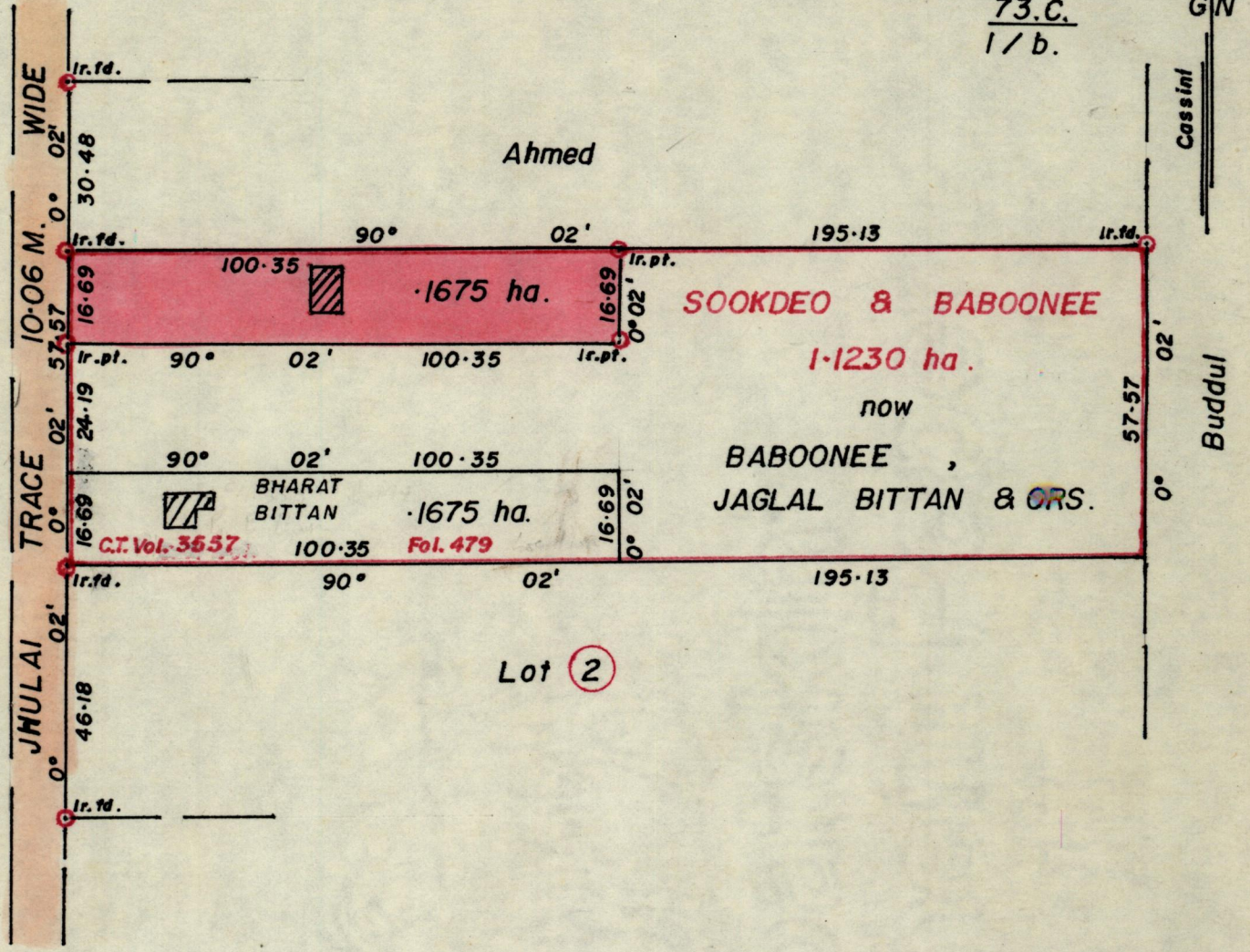
747

No 24755

R.P.O. Vol. 156  
C.T. Vol. 1833

Fol. 361  
Fol. 67

Ward of Siparia .  
County of St. Patrick.  
Cadastral Sheet (G. 18. C.)  
73.C.  
1/b.



Approved

*[Signature]*  
 Director of Surveys  
 97.10.23

Bk 1012 Fol. 43

SCALE 1 : 1250.

Note: To obtain compass bearings ~~add~~/subtract 2 minutes Distances are in metres.

PLAN of a Parcel of land coloured pink in the Ward of Siparia .

Containing point one six seven five hectare .

Surveyed by me, with due authority, in October 1994 .

I certify that I have complied with rule 76 under section 14(2)(d) of the Land Surveyors' Ordinance 1952, and that this plan is correct.

Checked by M.L. 97.10.29

*[Signature]*  
 Land Surveyor, Trinidad

Entered

6<sup>th</sup> April 1995