

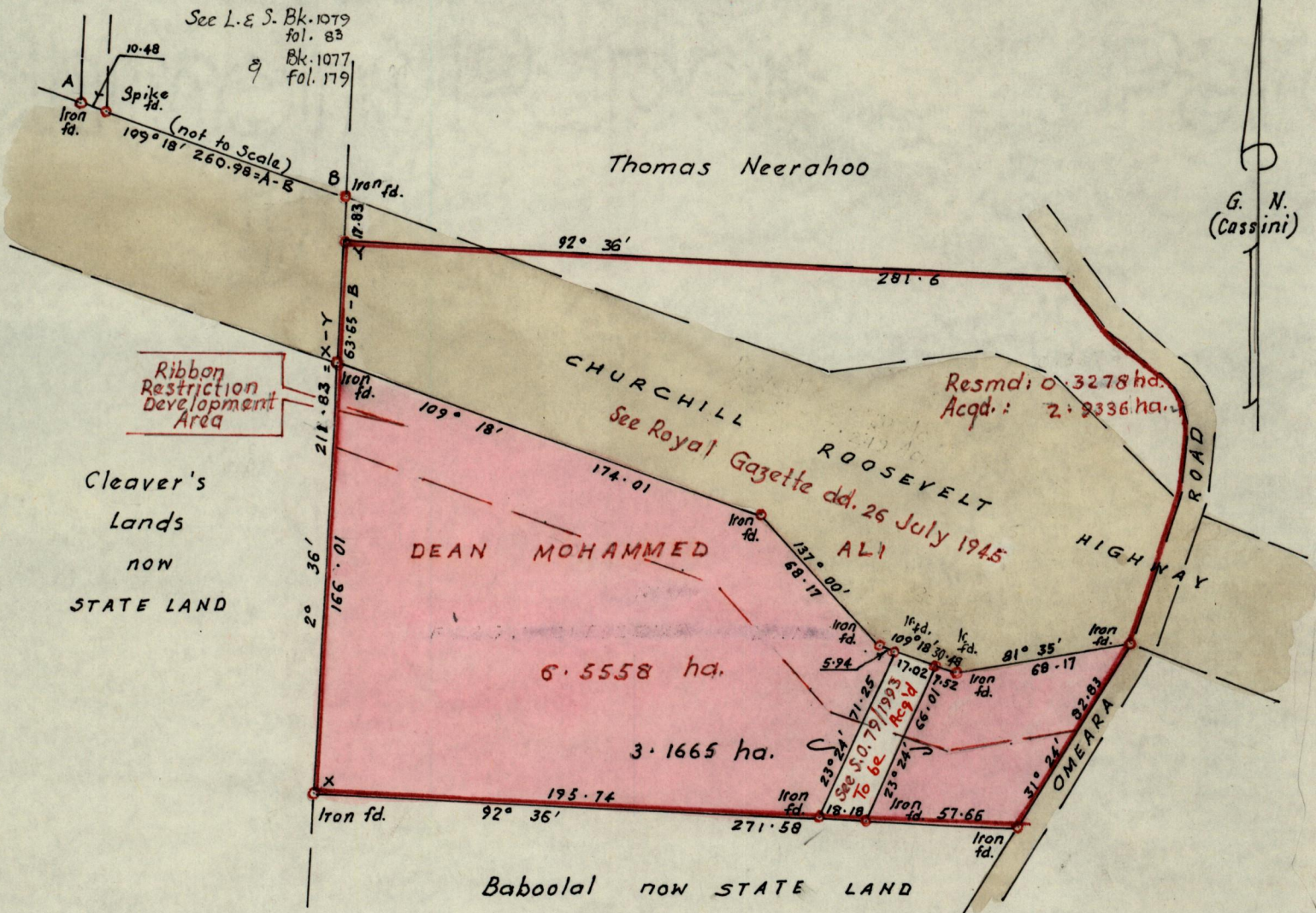
1145

730

R.P.O. Vol. 2  
C.T. Vol. 3630

Fol. 558  
Fol. 91

Ward of Arima  
County of St. George  
Cadastral Sheet B.24. H. (24C)  
(3/c)



Approved

*[Signature]*  
 Director of Surveys  
 960315

SCALE : 1/2500

Note: To obtain compass bearings add ~~minutes~~ 9 minutes Distances are in metres

PLAN of a Parcel of land coloured pink in the Ward of Arima  
 Containing three point one six six five hectares  
 Surveyed by me, with due authority, in July 1995

LAND SURVEY CONSULTANTS LTD.  
 2c DERE STREET  
 PORT-OF-SPAIN  
 62-53280

I certify that I have complied with rule 76 under section 14(2)(d) of the Land Surveyors' Ordinance 1952, and that this plan is correct.

Checked by G. Johnson 07/03/96

*[Signature]*  
 Land Surveyor, Trinidad  
 22<sup>nd</sup> April 1995