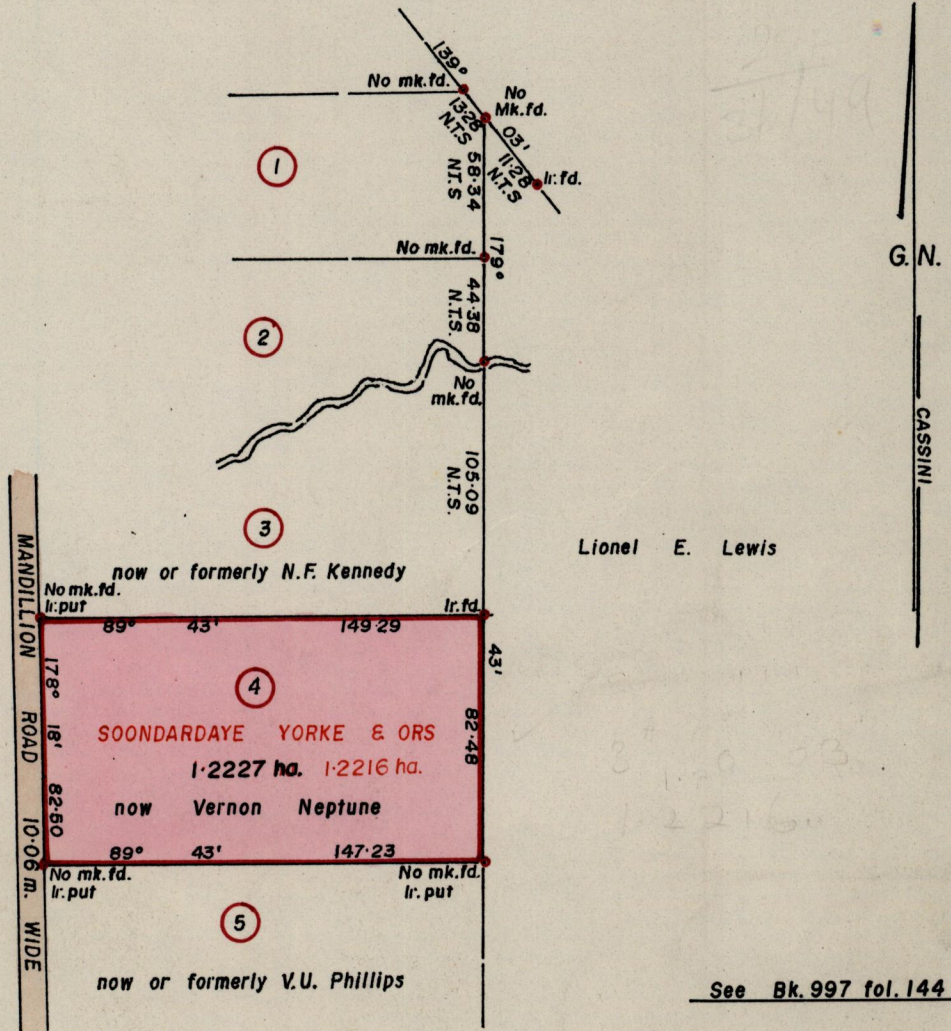


No 22178

R.P.O. Vol. 2  
C.T. Vol. 2681

Fol. 254  
Fol. 309

Ward of Turure  
County of St. Andrew  
Cadastral Sheet E.2.B.  $\frac{25F}{3/b \& 4/a}$



Approved *[Signature]*  
Director of Surveys  
92 960306

SCALE 1:2500

Note: To obtain compass bearings add/subtract 7 minutes Distances are in metres

PLAN of a Parcel of land coloured pink in the Ward of Turure  
Containing one point two two two seven hectares  
Surveyed by me, with due authority, in April 1995

I certify that I have complied with rule 76 under section 14(2)(d) of the  
Land Surveyors' Ordinance 1952, and that this plan is correct.

Checked by *[Signature]*  
04/03/96

*[Signature]*  
Land Surveyor, Trinidad  
May 15<sup>th</sup> 1995