

1068

REMAINING PORTION

R.P.O. Vol. 200

Fol. 573

Cadastral Sheet D.25.L 55 A

C. of T. Vol.

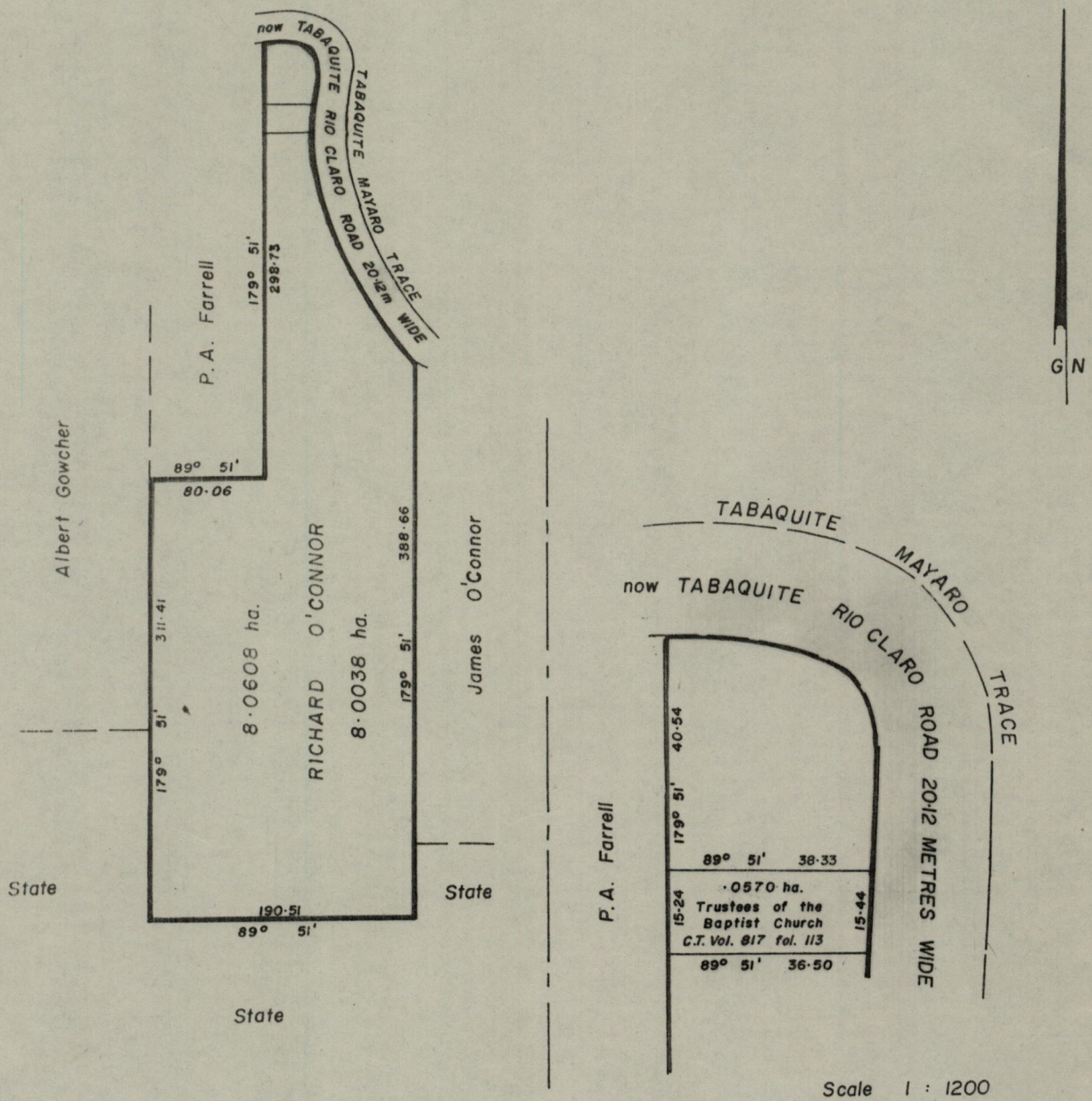
Vol.

1145

Ward of Charuma

County of Nariva

69
69



Approved

K.B. Jones

Director of Surveys

26.4.03

Note: To obtain compass bearings

add 9 minutes
subtract

SCALE 1 : 4752

Distances are in Metres.

This is a true copy of a diagram of Eight point zero six zero eight hectares originally granted to Richard O'Connor, shewing a portion coloured pink and containing Eight point zero zero three eight hectares being the remainder after One previous transfer of another portion of the land. the dividing lines having been run in conformity with Rule 76 under Sec. 7(d) of Cap. 27. No. 2 and duly certified by the Director of Surveys.

Checked by

[Signature] 3/4/76

Entered on

Sallecharan

Land Surveyor, Trinidad,

7/10/1985