

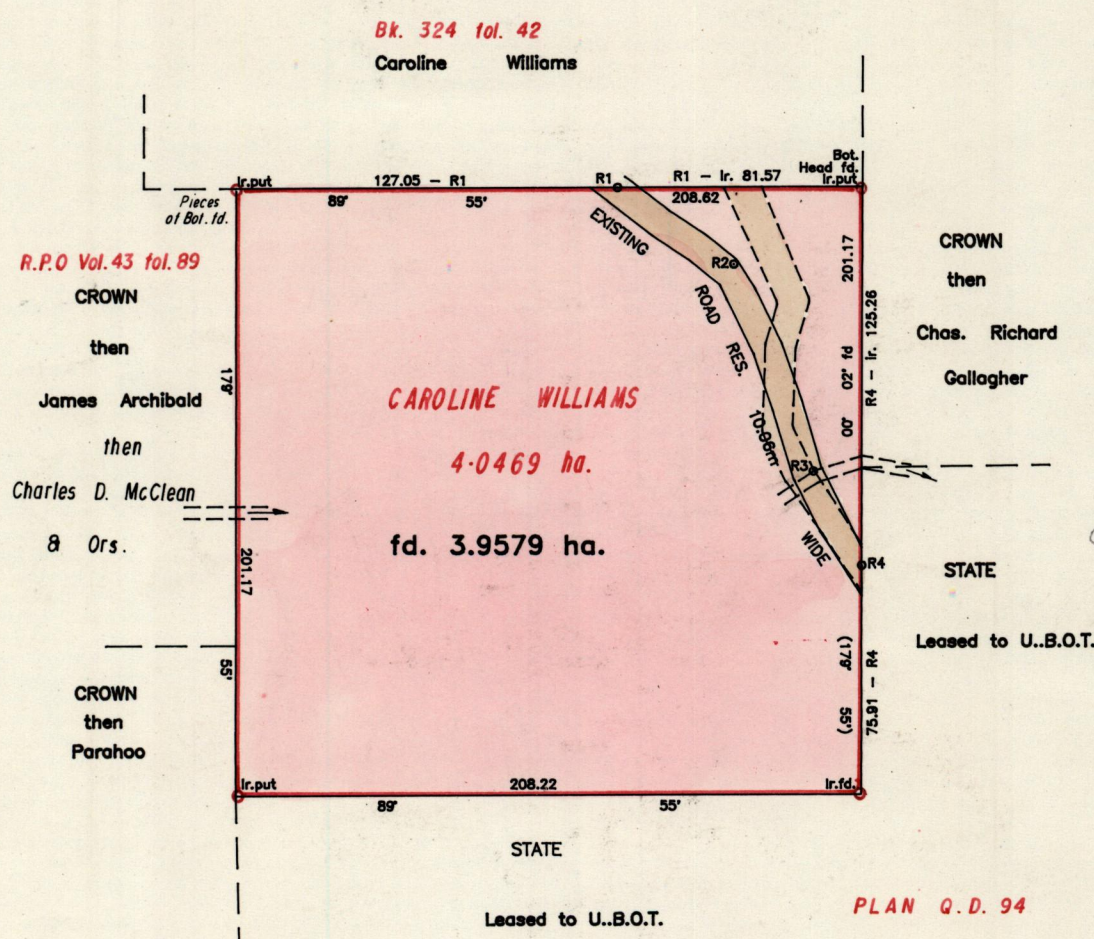
R.P.O. Vol. 17
C.T. Vol.

Fol. 166
Fol.

1145

Ward of Ortoire
County of Victoria
Cadastral Sheet (G.10.C) 54F 3/c

6888



Approved *Frank Charles*
Director of Surveys
96.01.25

----- ORIGINAL ROAD
SEE BACK OF PLAN

SCALE 1/2500

Bearings are cassini grid based on solar observations. Distances are in metres

Plan of a Parcel of land coloured pink in the Ward of Ortoire
Containing three point nine five seven nine hectares
Surveyed by me with due authority, in Feburary & March 1991
I, certify that I have complied with rule 76 under section 14 (2)(d) of the
Land Surveyors' Ordinance 1952, and that this plan is correct.

checked by *A.B. 16/1/95*
Entered Land Surveyor, Trinidad & Tobago *17th Jan 1996*

