

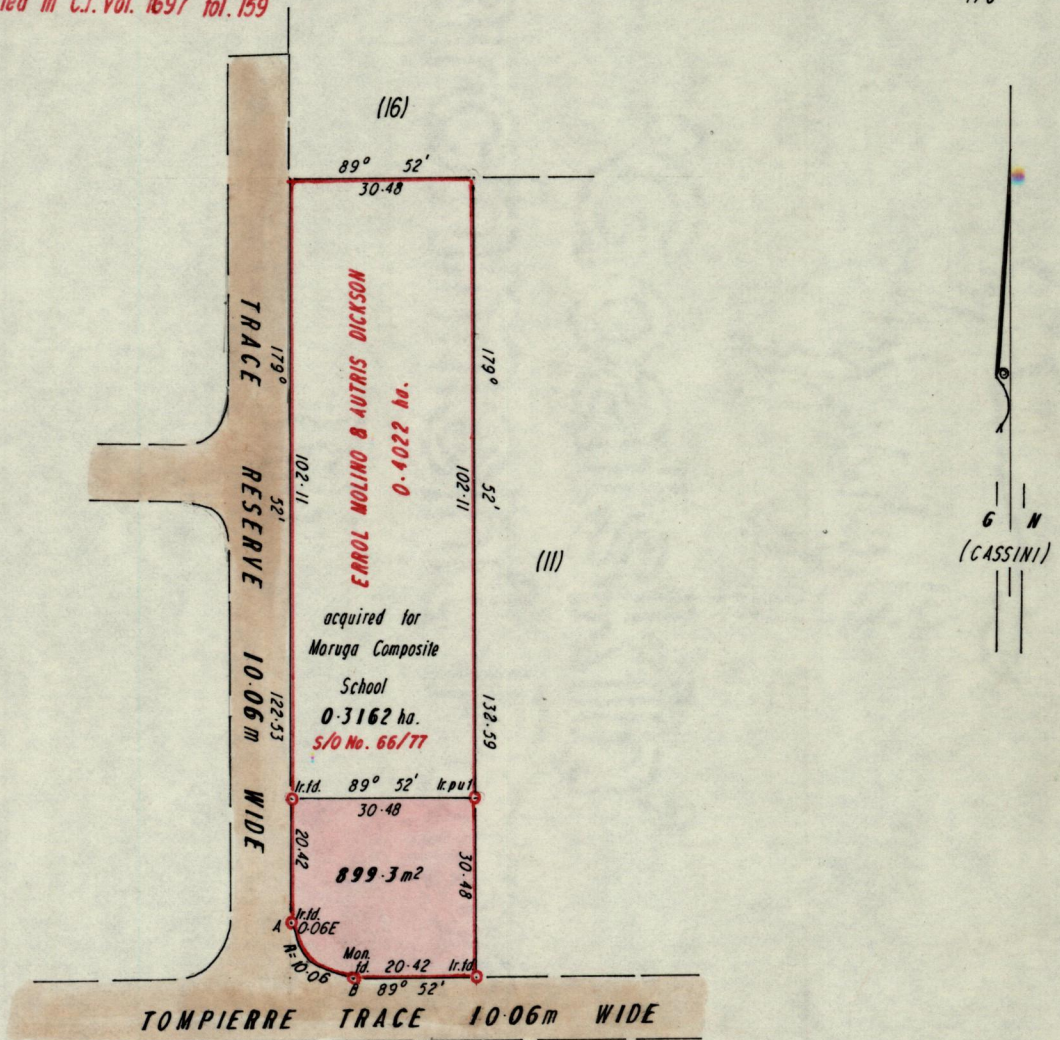
1145

6886

No 23214

R.P.O. Vol. Fol.
C.T. Vol. 1813 Fol. 519
Consolidated Plan filed in C.T. Vol. 1697 fol. 159

Ward of Moruga
County of Victoria
Cadastral Sheet (G-20-6) 74C
1/c



A - B 134° 52' 14.23

Approved

Law Charles

Director of Surveys
96.01.25

Bearings are based on solar observations.

Note: To obtain compass bearings add/subtract

SCALE 1/1250

minutes

Distances are in metres

PLAN of a Parcel of land coloured pink in the Ward of Moruga

Containing eight hundred and ninety nine point three square metres

Surveyed by me, with due authority, in May, 1995

I certify that I have complied with rule 76 under section 14(2)(d) of the Land Surveyors' Ordinance 1952, and that this plan is correct.

Checked by *Blaise 17/1/96*

Wint & Mills

Entered

Land Surveyor, Trinidad and Tobago 24/5 1995