

1145

L. & S.—54

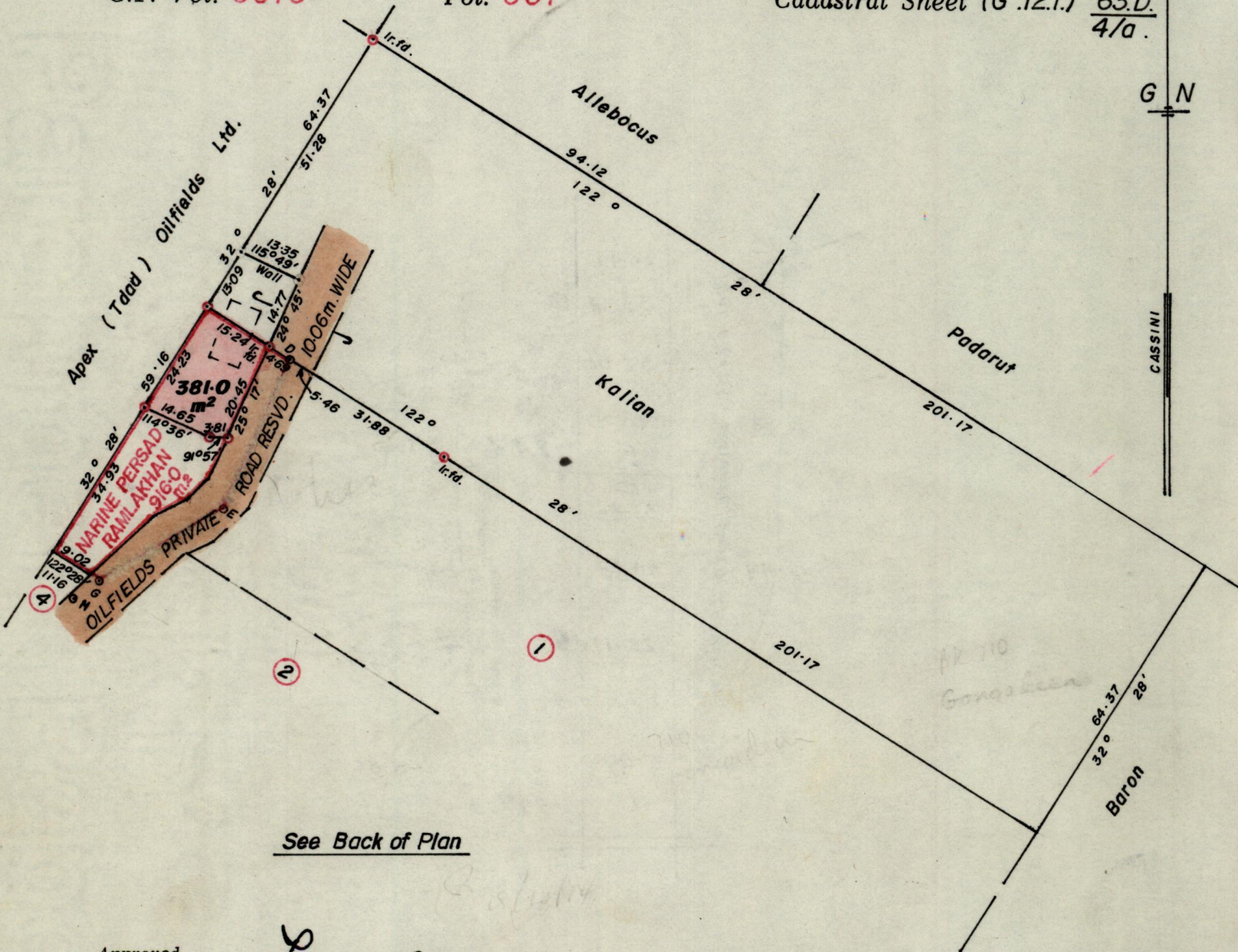
675

No 24857

R.P.O. Vol. 3  
C.T. Vol. 3075

Fol. 339  
Fol. 367

Ward of Siparia  
County of St. Patrick  
Cadastral Sheet (G.12.1.)  $\frac{63.D.}{4/a.}$



See Back of Plan

Approved

*John Coley*

Director of Surveys AP  
95.12.14

○ Denotes Iron put except otherwise stated.

SCALE 1 : 1250.

Bearings are based on solar observations  
Note: To obtain compass bearings add/subtract

minutes Distances are in metres.

PLAN of a Parcel of land coloured pink in the Ward of Siparia .  
Containing three hundred and eighty one square metres .  
Surveyed by me, with due authority, in August 1994 .

I certify that I have complied with rule 76 under section 14(2)(d) of the  
Land Surveyors' Ordinance 1952, and that this plan is correct.

Checked by *A.D. 20/11/95*

*Harvey S. Ramrekha*  
Land Surveyor, Trinidad & Tobago . 19 - 07 - 95



