

337

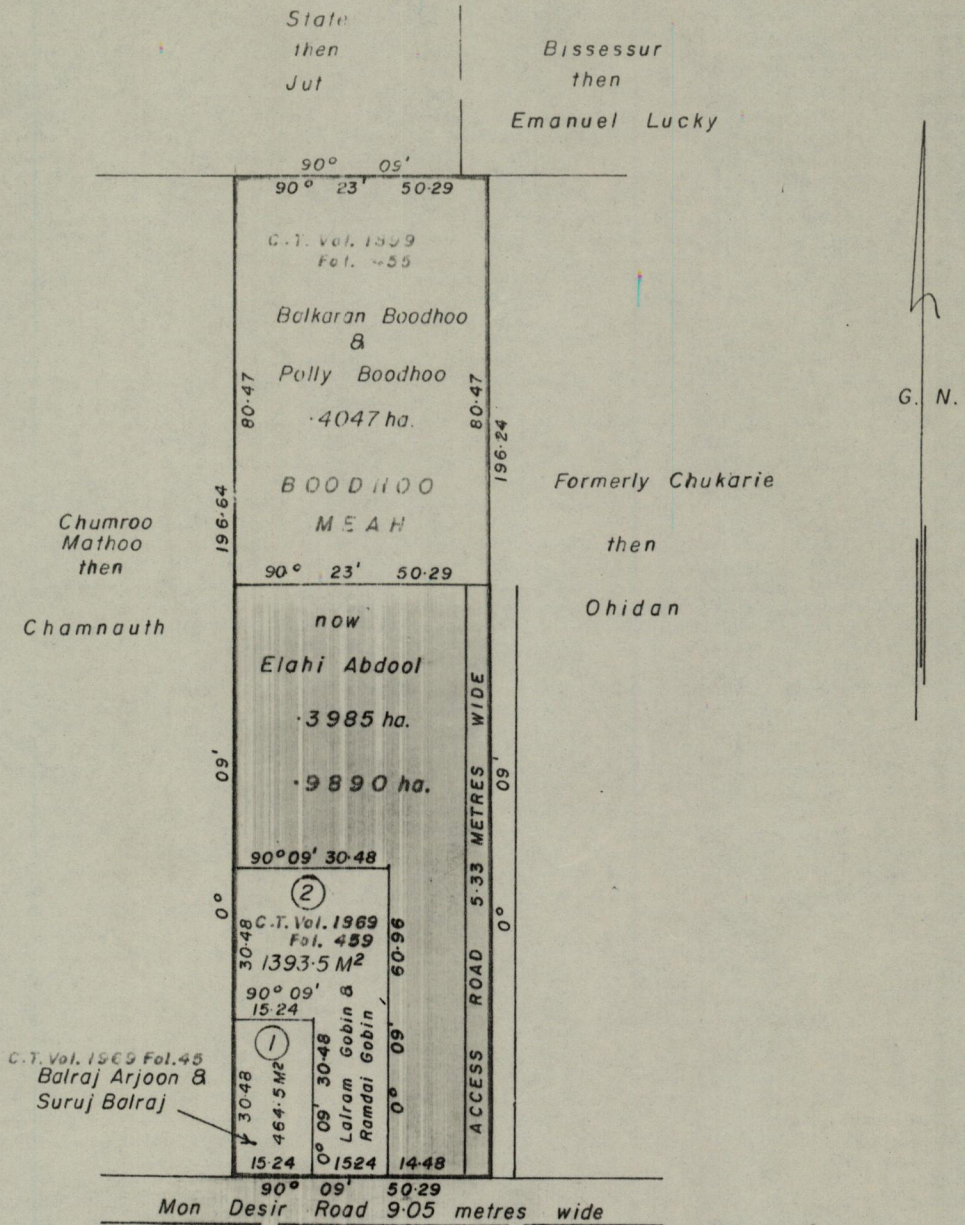
REMAINING PORTION

R.P.O. Vol. 18 Fol. 519
C. of T. Vol. 474 Vol. 31

1145

Cadastral Sheet G. 6. O. (62 C).
Ward of La Brea
County of St. Patrick

67



Approved

H.B. Jagan
Director of Surveys
86.3.24

SCALE 1 - 1500

Note: To obtain compass bearings ^{add} 9 _{subtract} minutes

Distances are in metres.

This is a true copy of a diagram of Point nine eight nine zero hectares originally granted to BOODHOO MEAH, shewing a portion coloured pink and containing Point three nine eight five hectares being the remainder after three previous transfers of other portions of the land. the dividing lines having been run in conformity with Rule 76 under Sec. 7(d) of ~~Cap. 87 No. 2~~ 14(2) the Land Surveyors' Ordinance 1952 and duly certified by the Director of Surveys.

Checked by *H.B. Jagan* 86.3.24

Entered on

S. Pollicharan
Land Surveyor, Trinidad,

4/8/1983