

1145

L. & S.—54

667

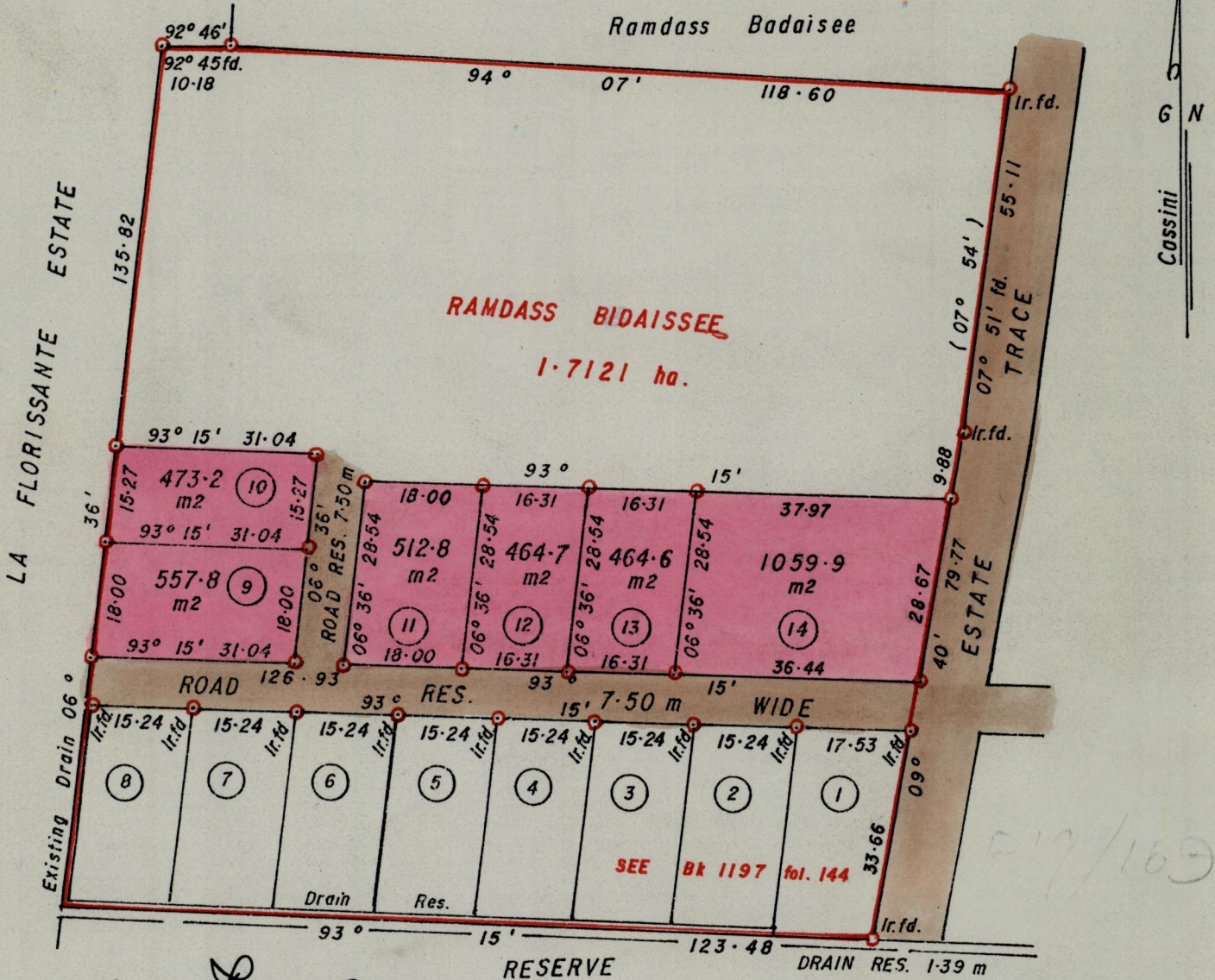
No 24379

R.P.O. Vol. C.T. Vol. 2104

Fol. 403

Ward of Arima County of St George Cadastral Sheet B.24.B.

24 B 4/a



Approved

Francis Charles

Director of Surveys AP 95.12.08

Denotes Iron put except where otherwise stated.

SCALE 1:1000

Distances are in metres

Note: To obtain compass bearings add/subtract 7 minutes

PLAN of 6 Parcels of land coloured pink in the Ward of Arima

Containing together zero point three five three three hectares.

Surveyed by me, with due authority, on 24th January 1995.

I certify that I have complied with rule 76 under section 14(2)(d) of the Land Surveyors' Ordinance 1952, and that this plan is correct.

Checked by *Shaige 16/1/95*

Lawrence Blake
Land Surveyor, Trinidad 24th February 1995