

REMAINING PORTION

R.P.O. Vol. 1499

Fol. 149

1145

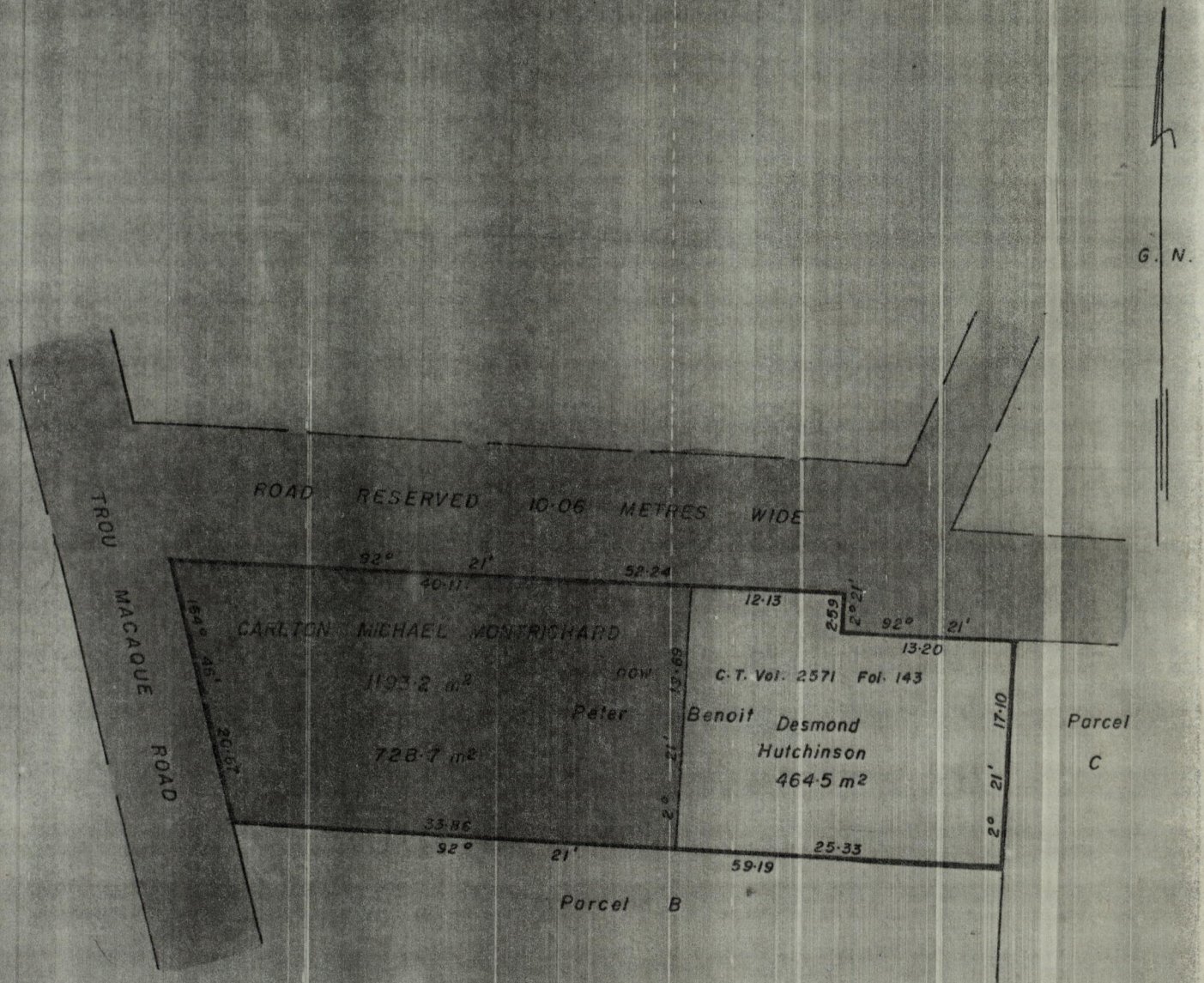
Cadastral Sheet A.20.L. 63

C. of T. Vol. 2011

Vol. 287

Ward of St. Ann's 63

County of St. George



Approved

M.B. Joseph

Director of Surveys

86.2.25

Note: To obtain compass bearings add subtract minutes

SCALE 1 - 500

Distances are in metres.

This is a true copy of a diagram of One thousand, one hundred and ninety-three point two square metres originally granted to **CARLTON MICHAEL MONTRICHARD**, shewing a portion coloured pink and containing Seven hundred and twenty-eight point seven square metres being the remainder after one previous transfer of another portion of the land. the dividing lines having been run in conformity with Rule 76 under Sec. 7(d) of Cap. 27. No. 2 and duly certified by the Director of Surveys.

Checked by *A* 86.2.25

Entered on

Albert Hayes
 Land Surveyor, Trinidad, 20 February, 1980.