

No 27836

1145

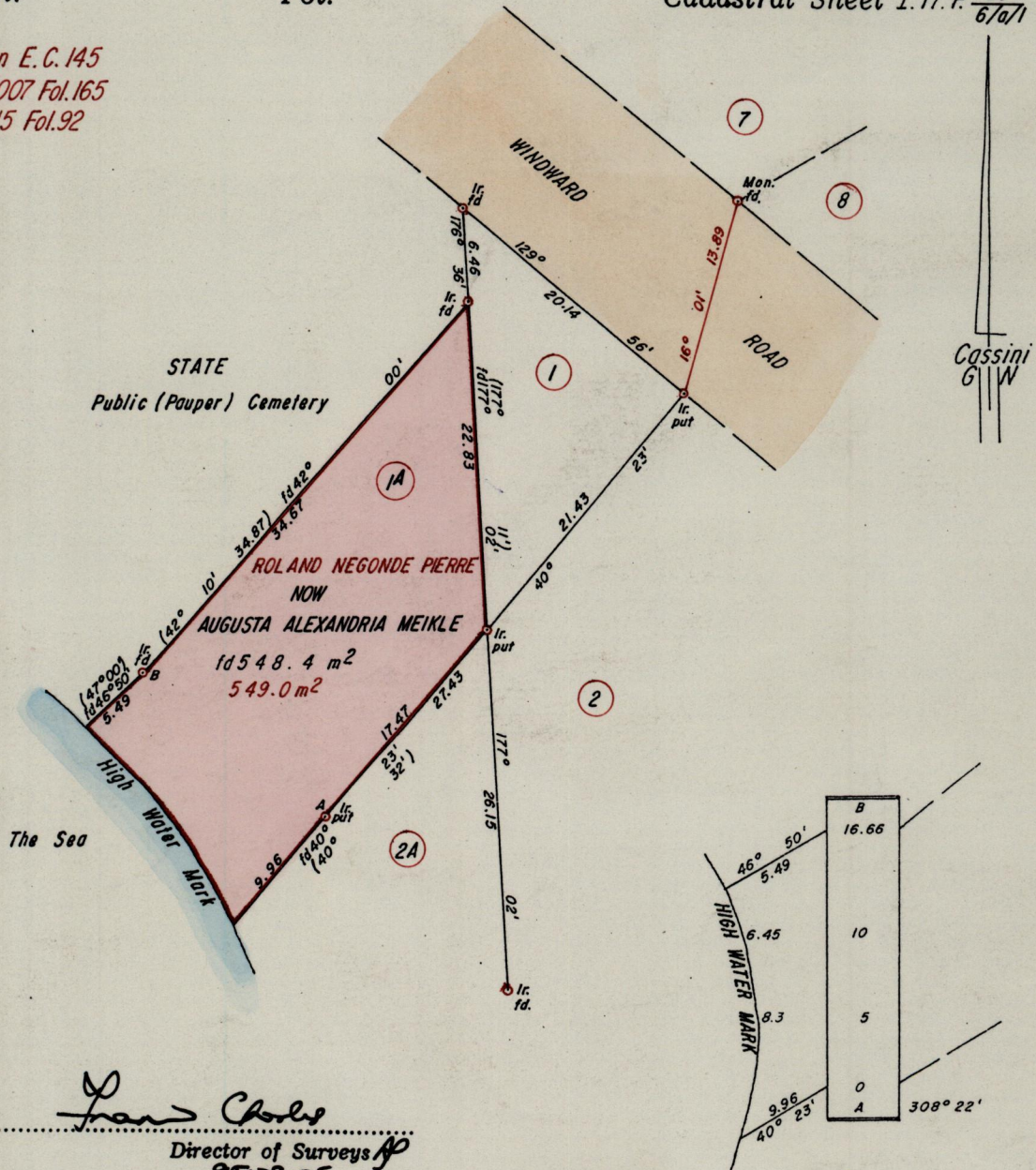
614

R.P.O. Vol. 1283
C.T. Vol.

Fol. 441
Fol.

Ward of Tobago
Parish of St. Andrew
Cadastral Sheet I.17.P. $\frac{26}{6/a/1}$

L & S Plan E.C. 145
Bk. 1007 Fol. 165
Bk. 915 Fol. 92



Approved

Frank Charles
Director of Surveys
95.09.05

Bearings are based on solar observations

SCALE 1:500

Note: To obtain compass bearings add/subtract

minutes

Distances are in Metres

PLAN of a Parcel of land coloured pink in the Ward of Tobago

Containing five hundred and forty eight point four square metres

Surveyed by me, with due authority, in November 1993

I certify that I have complied with rule 76 under section 14(2)(d) of the Land Surveyors' Ordinance 1952, and that this plan is correct.

Checked by *A. Bud* 14/8/95

Rosale Derrick

Entered

Land Surveyor, Trinidad and Tobago *March 12th 1994*