

3947

REMAINING PORTION

R.P.O. Vol. 56

Fol. 409

C. of T. Vol. 775

Vol. 275

1145 1145

Cadastral Sheet G.12.N.

63D  
47d

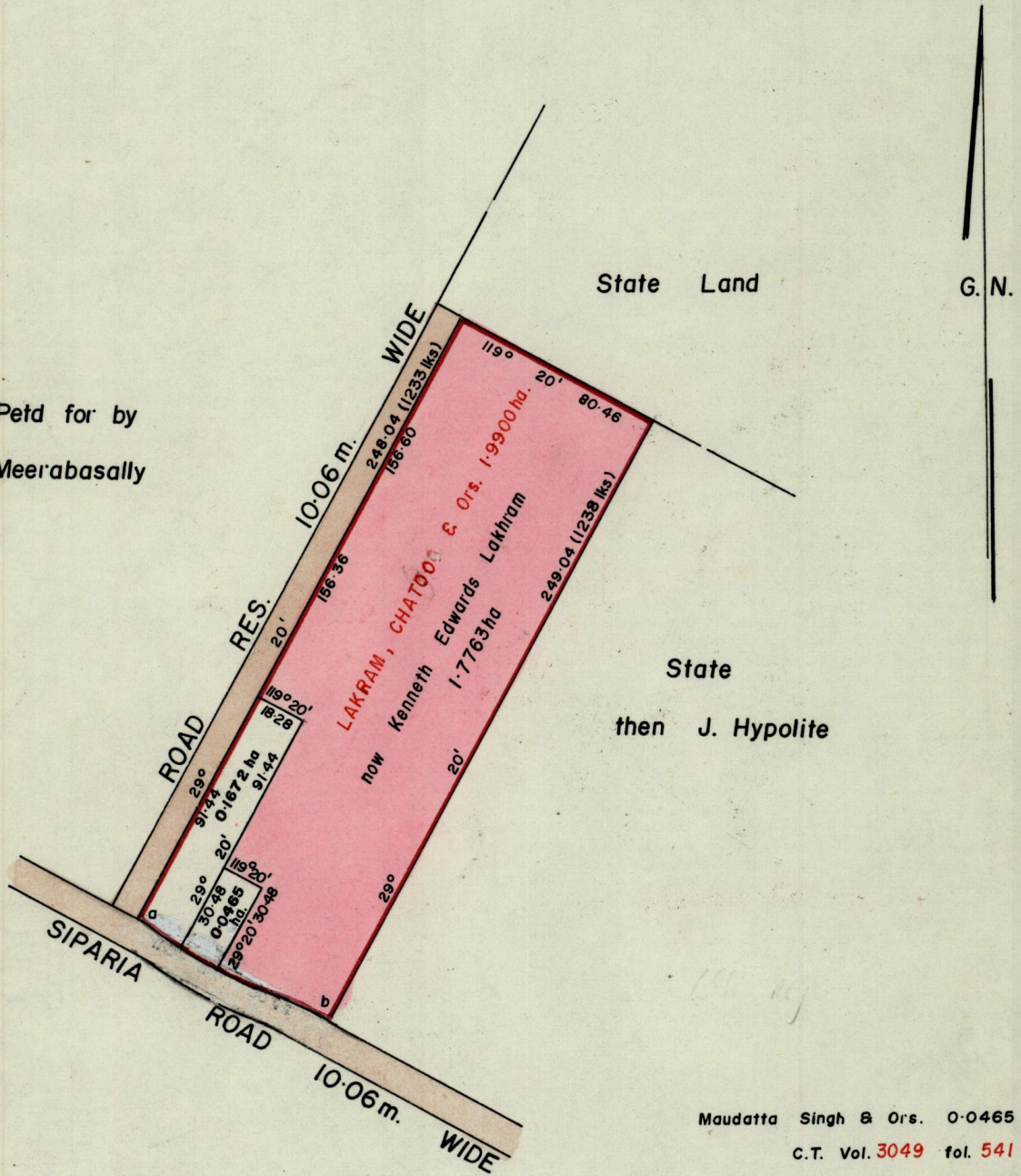
520

Ward of Siparia

County of St. Patrick

See BK. 457 : 35

Petd for by  
Meerabasally



State Land

G. N.

State

then J. Hypolite

Maudatta Singh & Ors. 0.0465 ha.

C.T. Vol. 3049 fol. 541 ✓

Harrinanan Lakhram 0.1672 ha.

C.T. Vol. 1616 fol. 209 ✓

a-b 119° 20' 80.46

SCALE 1/2500

Distances are in metres

Approved

*[Signature]*  
Director of Surveys  
95.06.12

Note: To obtain compass bearings ~~and~~ 5 minutes  
substract

This is a true copy of a diagram of one point nine nine zero zero hectares originally transferred granted to LAKRAM, CHATOO & SOOKROO, shewing a portion coloured pink and containing one point seven seven six three hectares being the remainder after two previous transfer of another portion of the land.

the dividing lines having been run in conformity with Rule 76 under Sec. 14(2)(d) of the Land Surveyors Ordinance 1952 and this plan is correct and duly certified by the Director of Surveys.

Checked by

*[Signature]*

Entered on

*[Signature]*  
Land Surveyor, Trinidad,

23 May 1995